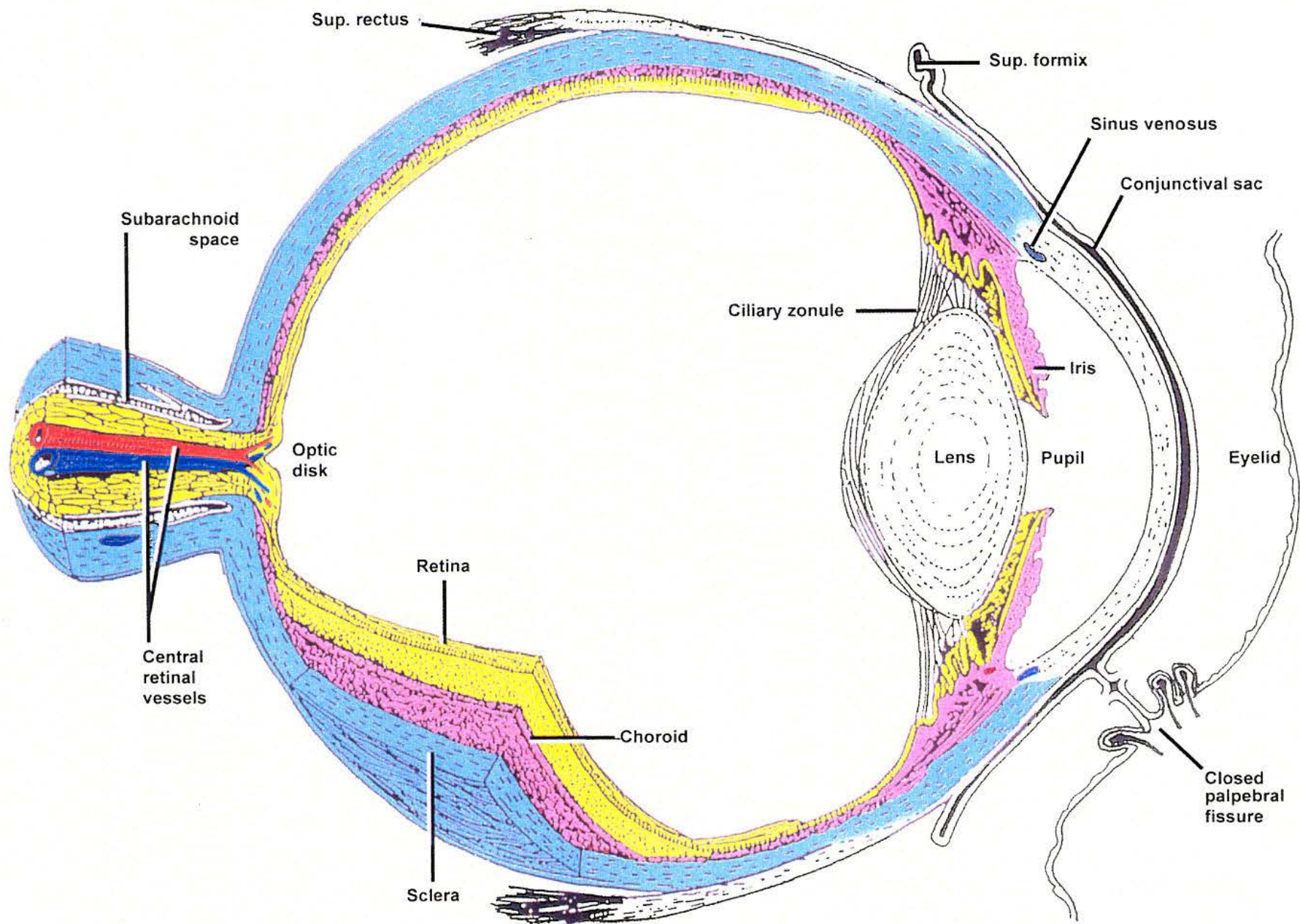
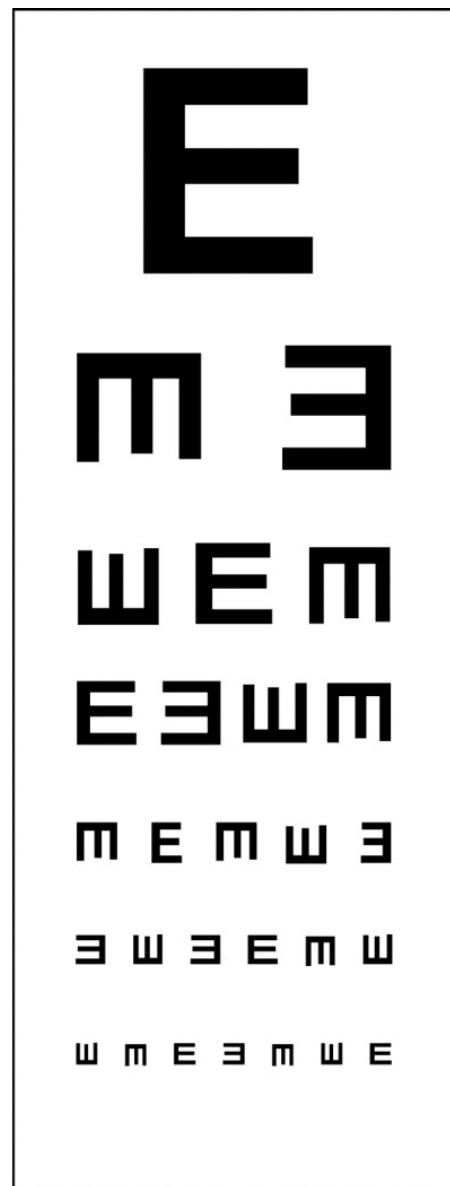
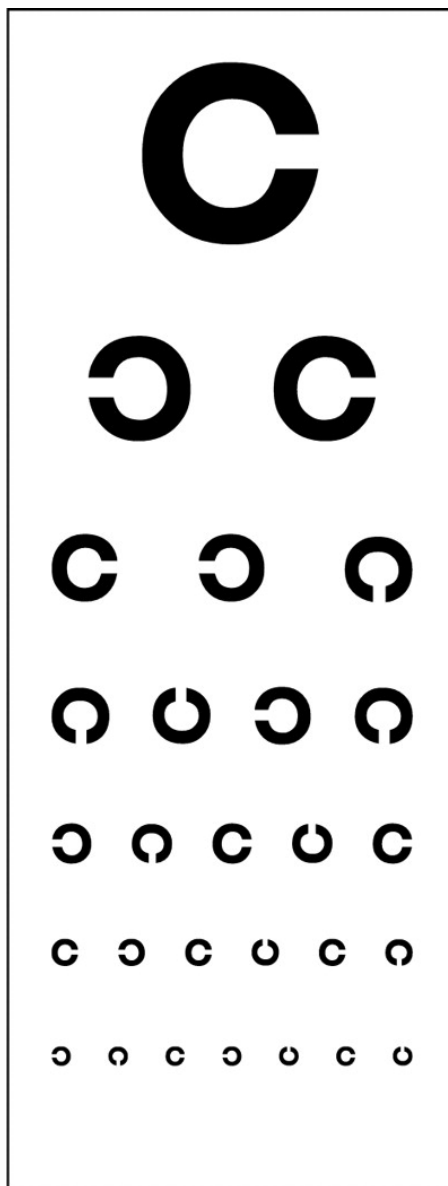


# Súčasné možnosti chirurgickej liečby v oftalmológii?

Martin 22.11.2016





log RAD 40cm/32cm	Unità M	RADNER – TAVOLA 2 Per distanza di lettura di 40 o 32 cm logRAD = equivalente di lettura del logMAR	Decimale 40cm/32cm
----------------------	------------	--	-----------------------

Mi pareva giusto averle detto  
di rientrare, se non voleva  
restare fuori nella veranda

0,9/1,0	3,2		0,13/0,10
---------	-----	--	-----------

La ragazza alta aveva perso  
un orecchino, ma un signore  
anziano ghielo trovò subito

0,8/0,9	2,5		0,16/0,13
---------	-----	--	-----------

Il turista era davvero stanco  
di camminare, ma poi voleva  
scalare quelle alte montagne

0,7/0,8	2,0		0,20/0,16
---------	-----	--	-----------

Il bambino della vicina volle  
le caramelle, che gli piaceva  
mangiare dopo aver studiato

0,6/0,7	1,6		0,25/0,20
---------	-----	--	-----------

In giardino Mario aveva visto  
la tartaruga, che lui aveva  
perduto nella stessa mattina

0,5/0,6	1,26		0,32/0,25
---------	------	--	-----------

Il ragazzo era davvero stufo  
di attendere, ma non poteva  
lasciare sole quelle persone

0,4/0,5	1,0		0,40/0,32
---------	-----	--	-----------

La regina volle parlare solo  
al cavaliere, che lei avrebbe  
voluto nella grande impresa

0,3/0,4	0,8		0,50/0,40
---------	-----	--	-----------

Vi voleva tanto spedire altre  
tre cartoline, ma il negoziante  
chiusero prima quelle disdette

0,2/0,3	0,6		0,63/0,50
---------	-----	--	-----------

Se avrete fatto vedere tutto  
in cartolina, che lei aveva  
voluto proprio quella mattina

0,1/0,2	0,5		0,8/0,63
---------	-----	--	----------

Lei ha visto una cartolina tutta  
per se stessa, che lei aveva  
voluto proprio quella mattina

0,0/0,1	0,4		1,00/0,80
---------	-----	--	-----------

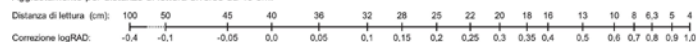
Lei aveva visto quella carta  
per se stessa, che lei aveva  
voluto proprio quella mattina

-0,1/0,0	0,32		1,26/1,00
----------	------	--	-----------

Lei aveva visto quella carta  
per se stessa, che lei aveva  
voluto proprio quella mattina

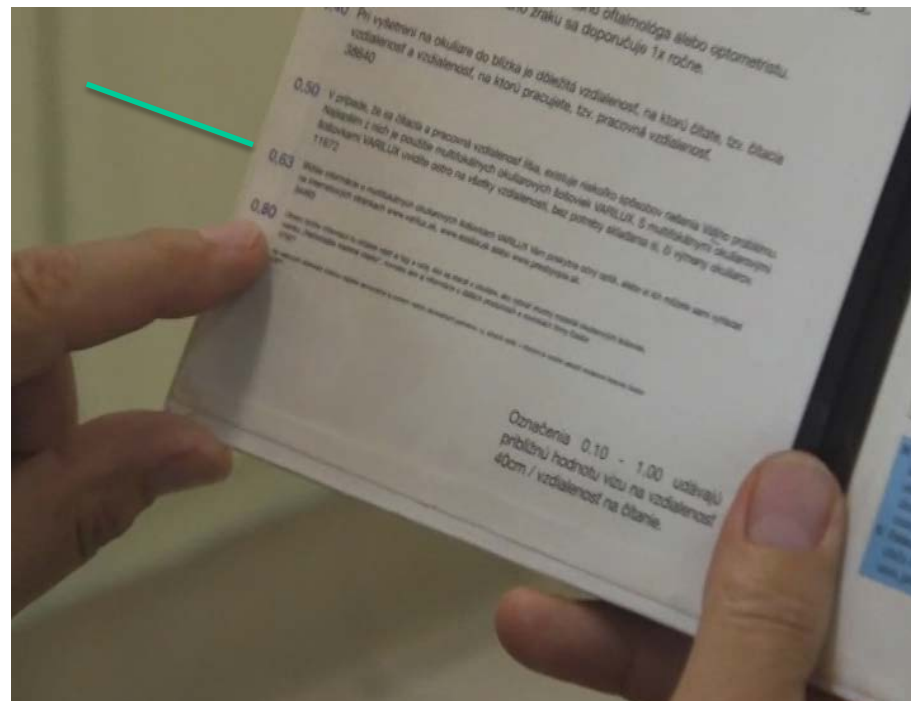
-0,2/-0,1	0,25		1,6/1,26
-----------	------	--	----------

Aggiustamento per distanze di lettura diverse da 40 cm:



Tutti i diritti riservati • Vietata la riproduzione anche parziale

© W. Radner 2012



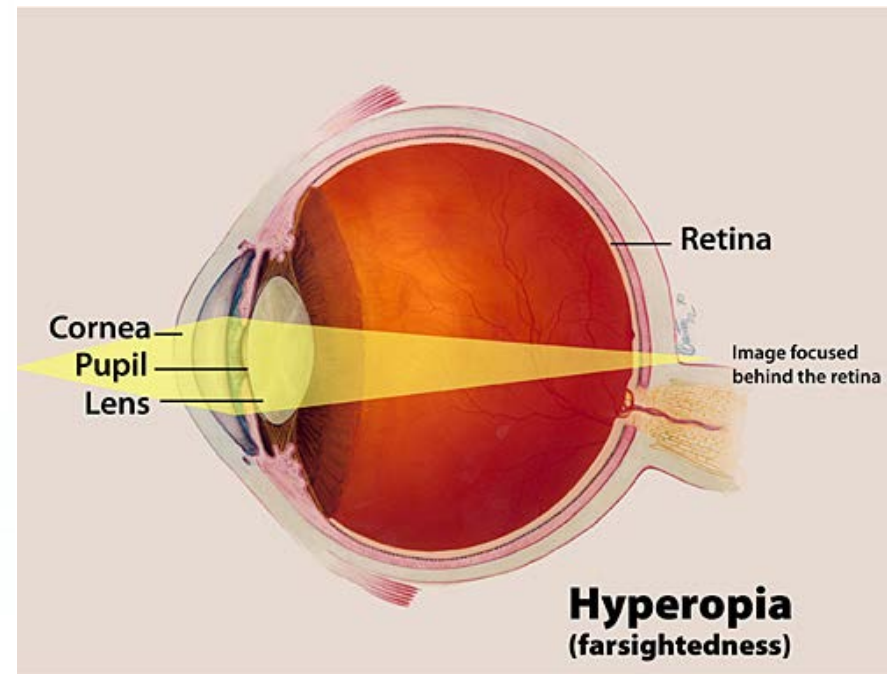
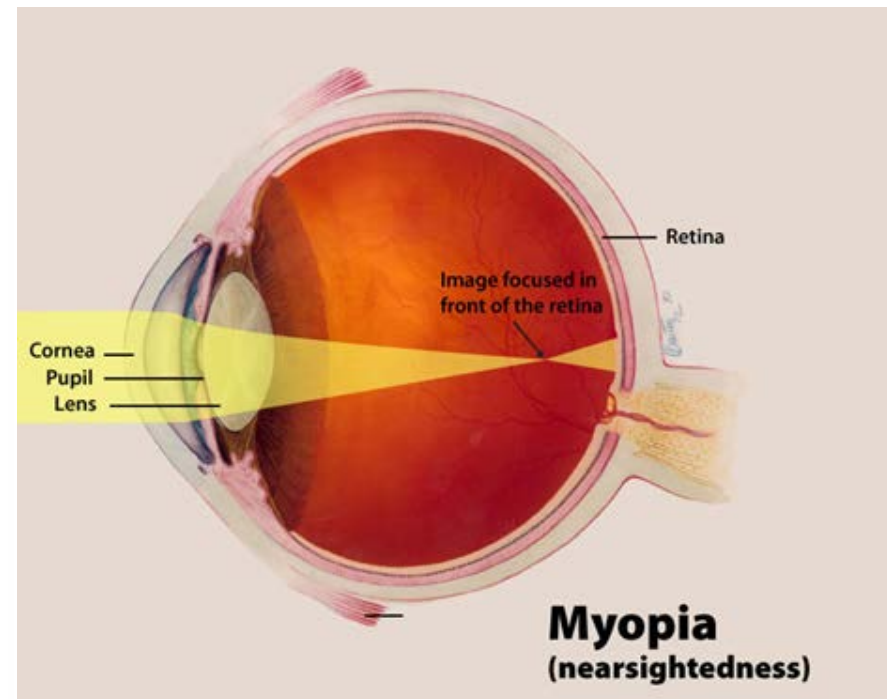
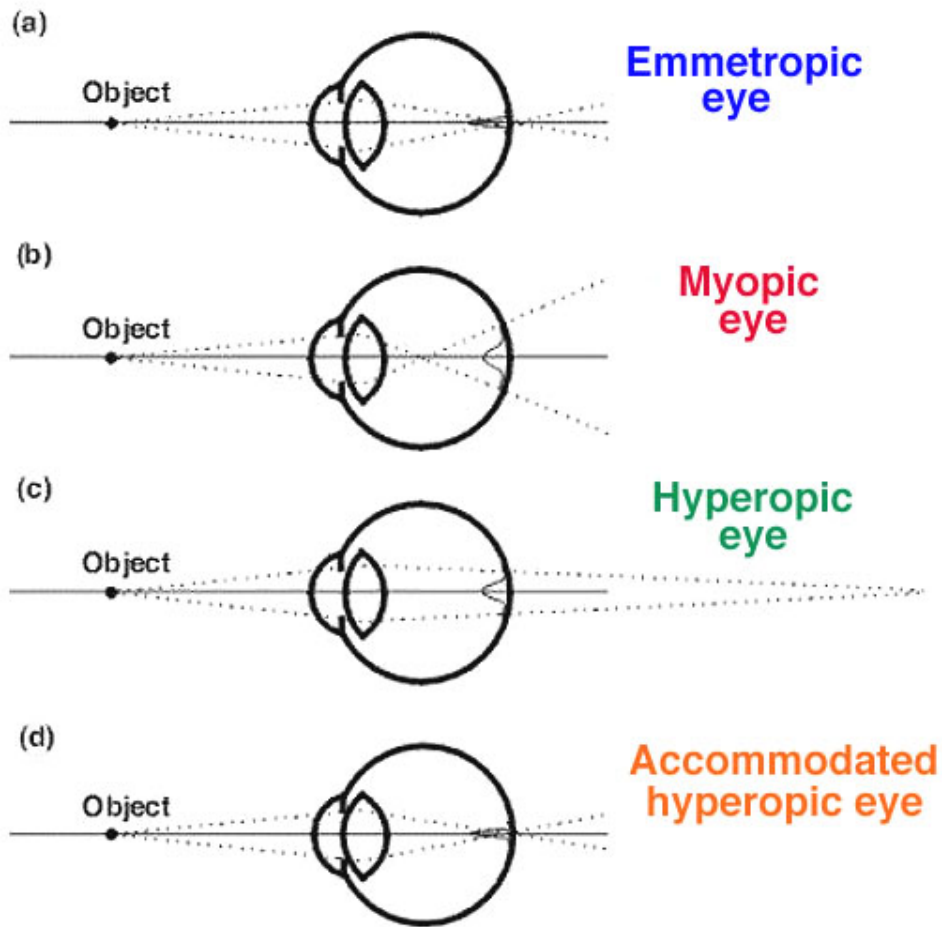
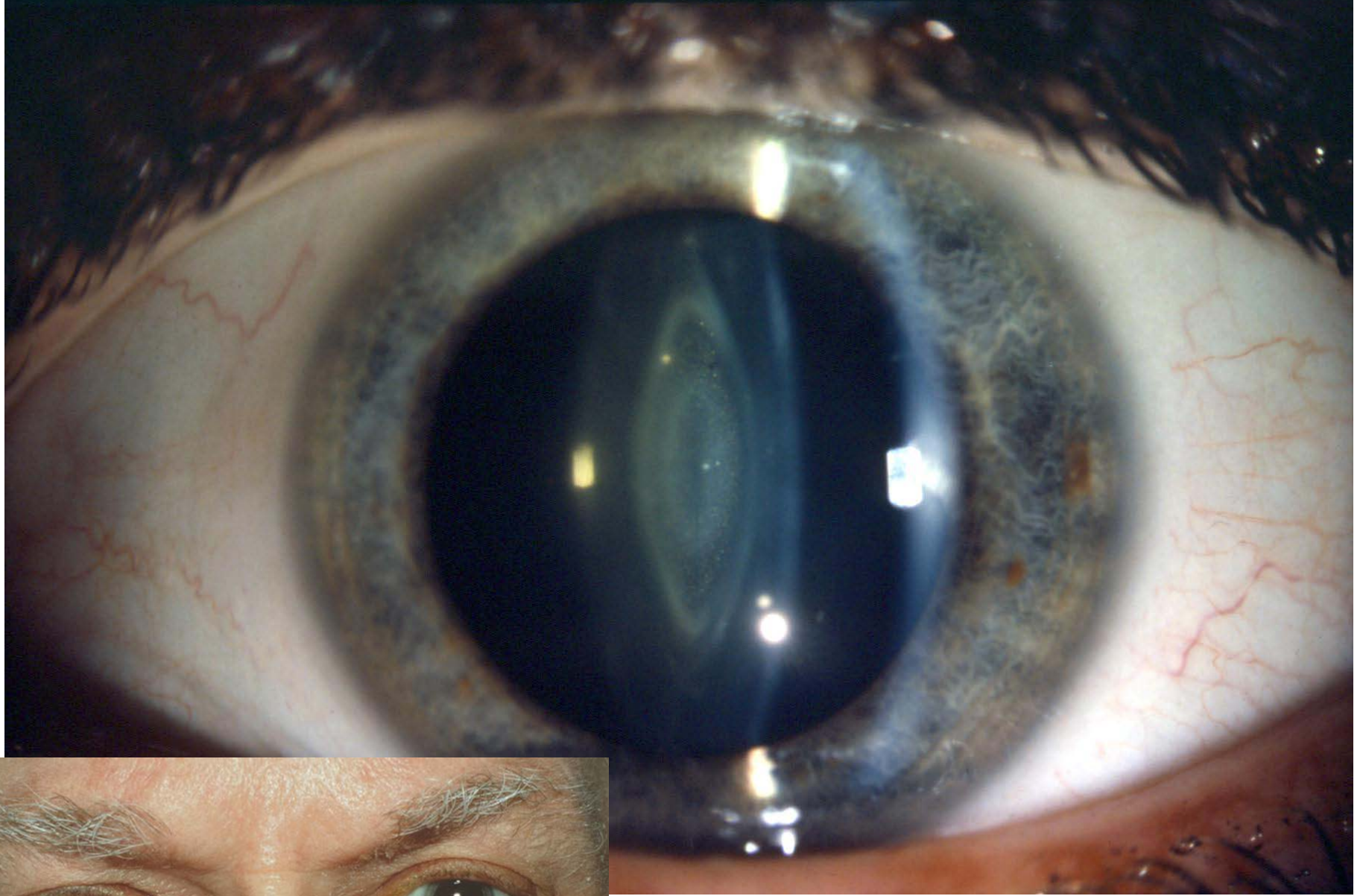
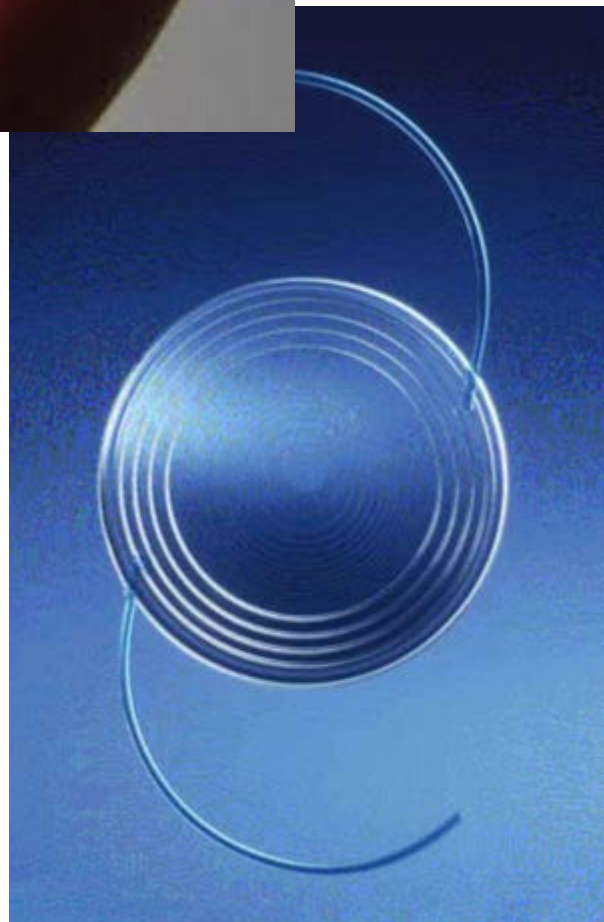
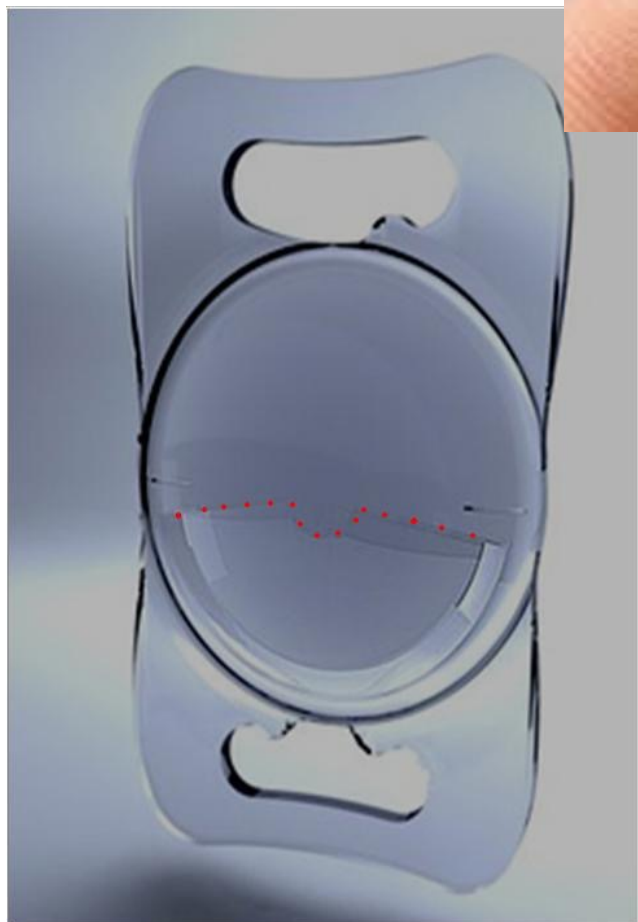


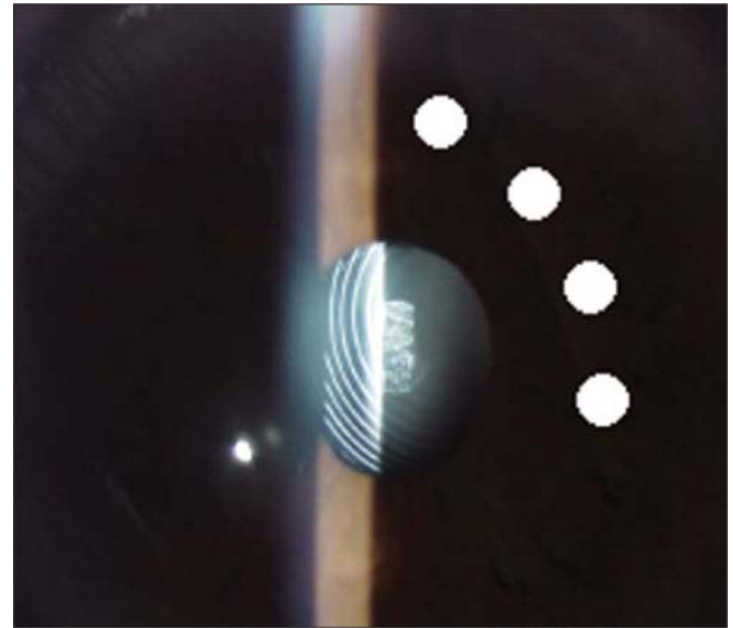
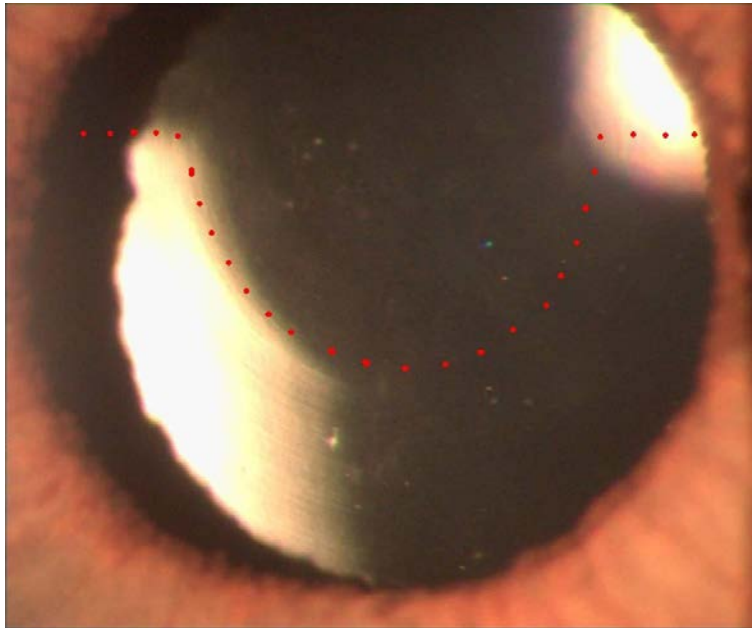
Figure 17. Point spread function at the back of the eye with different refractive errors.

# Sivý zákal (cataracta)

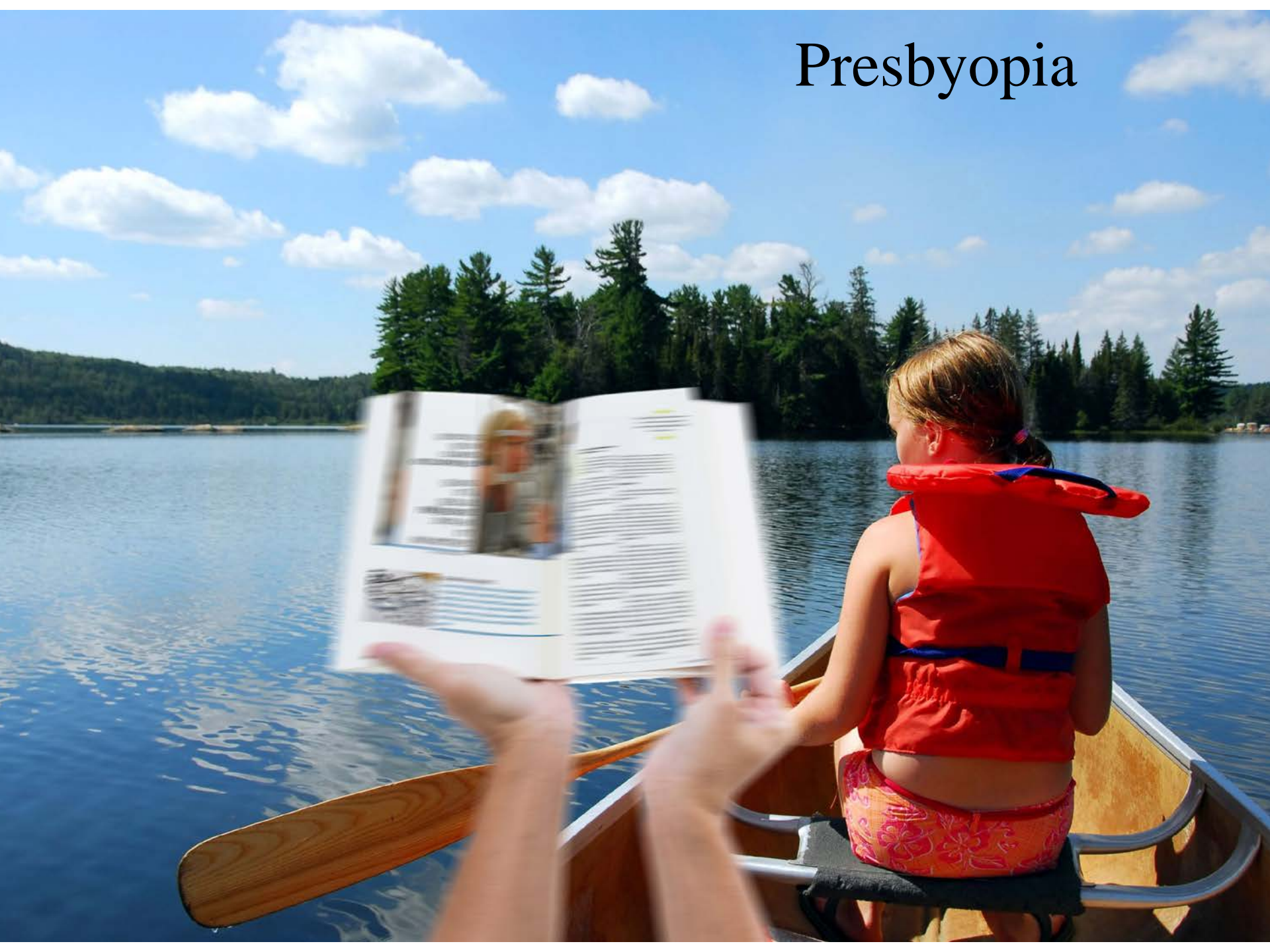






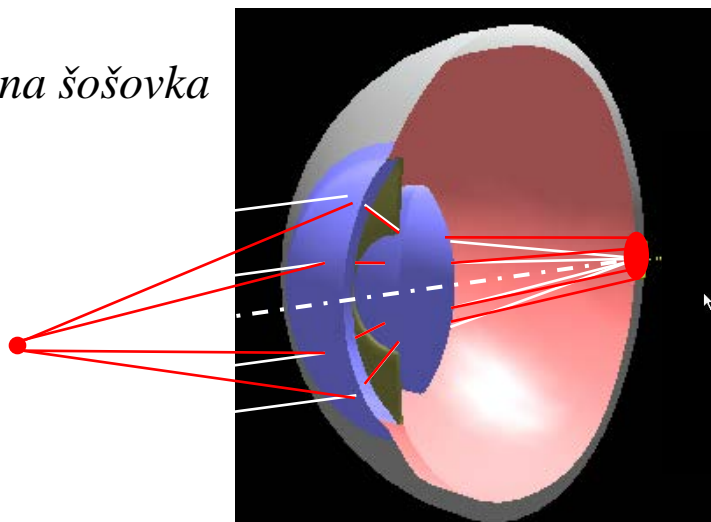


# Presbyopia

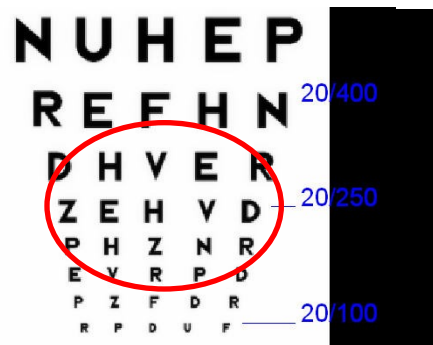


# Pseudoakomodačná šošovka (multifokálna)

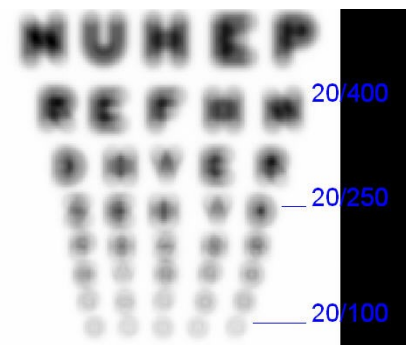
*Monofokálna šošovka*



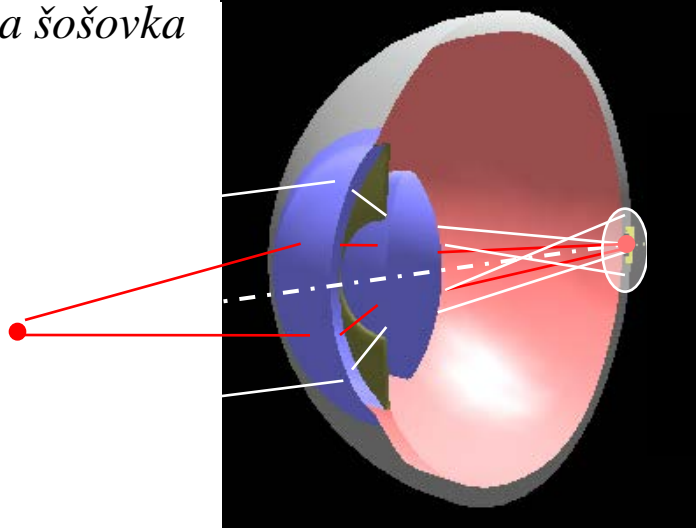
*Diaľka*



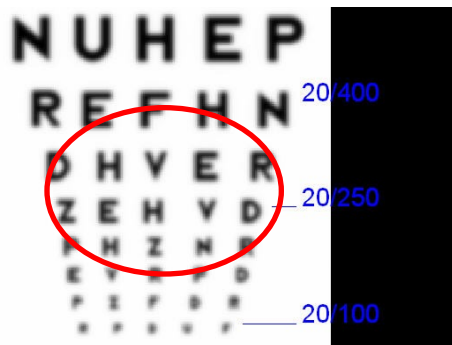
*Blízko*



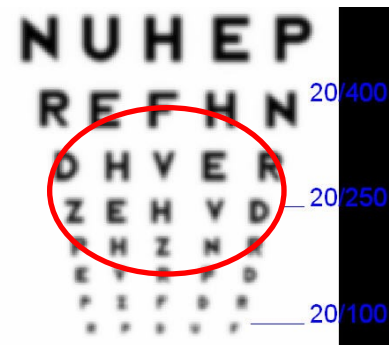
*Multifokálna šošovka*



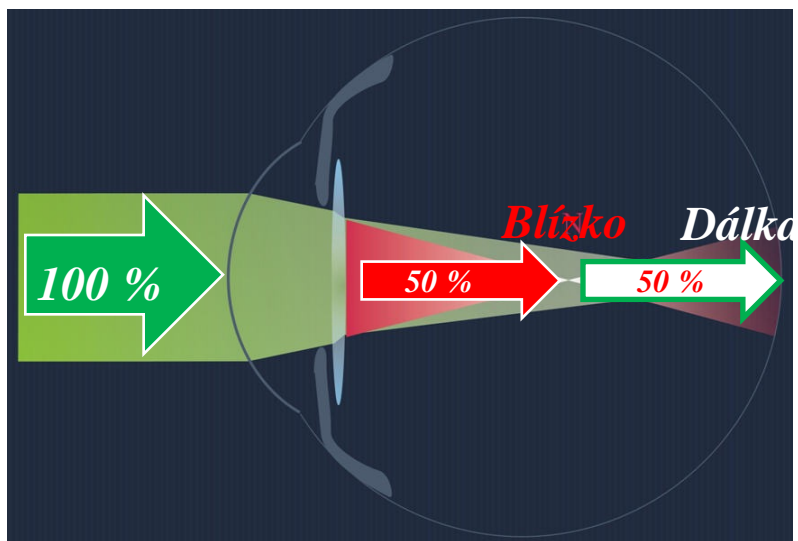
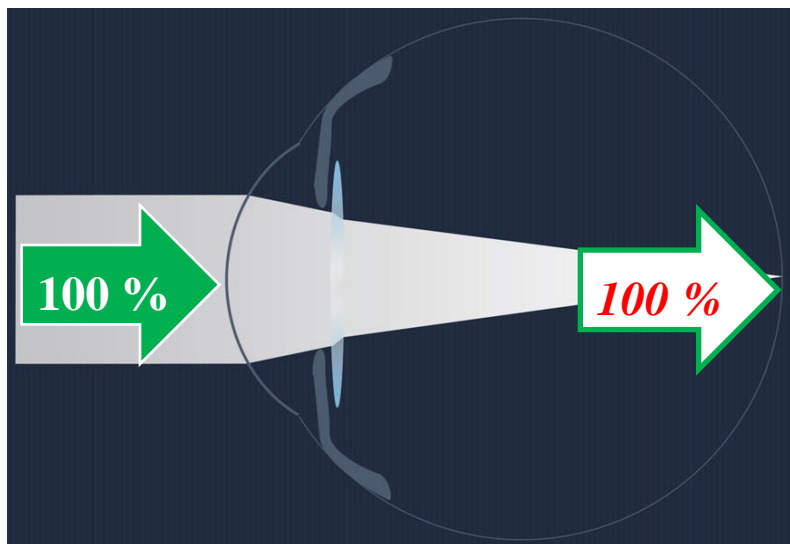
*Diaľka*



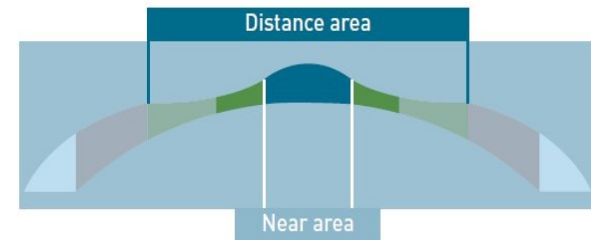
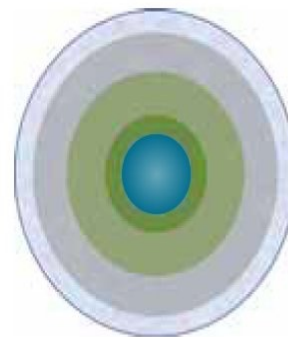
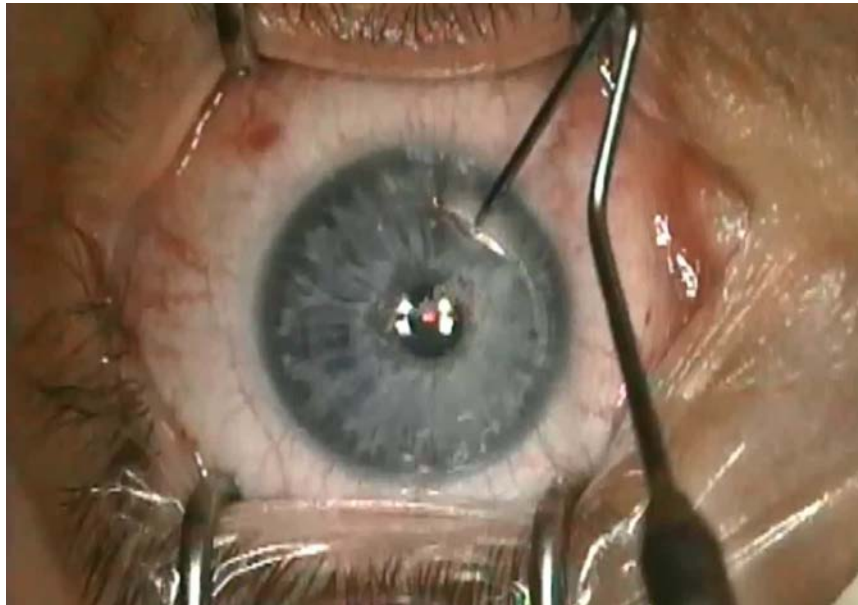
*Blízko*



# Pseudoakomodačná šošovka (multifokálna)



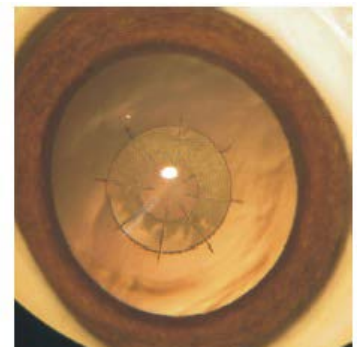
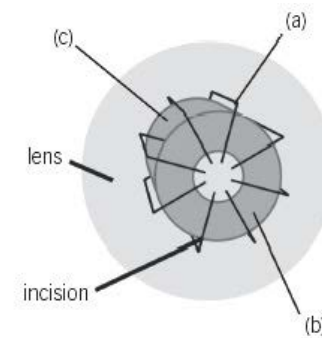
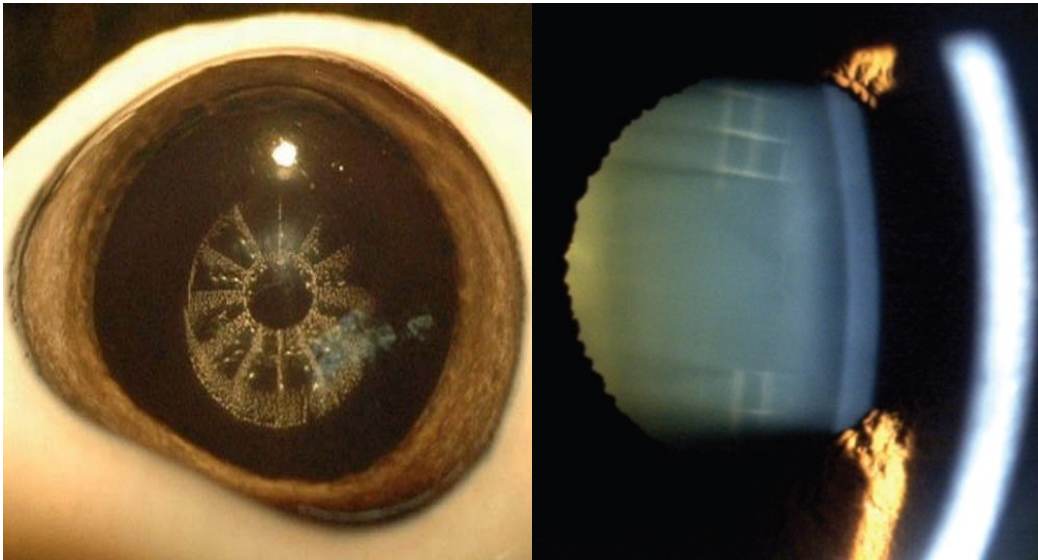
# LASIK (monovision, MF profily) - PresbyMax, Supracor



Bi-aspheric profiles: The PresbyMAX® procedure

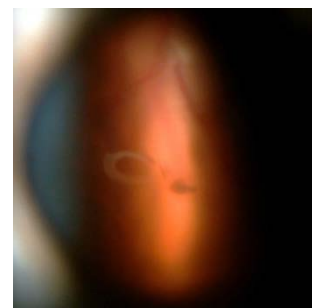
Cornea Transition Zone Distance corrected area Intermediate corrected area Near corrected area

# Femtosekundová lentotómia



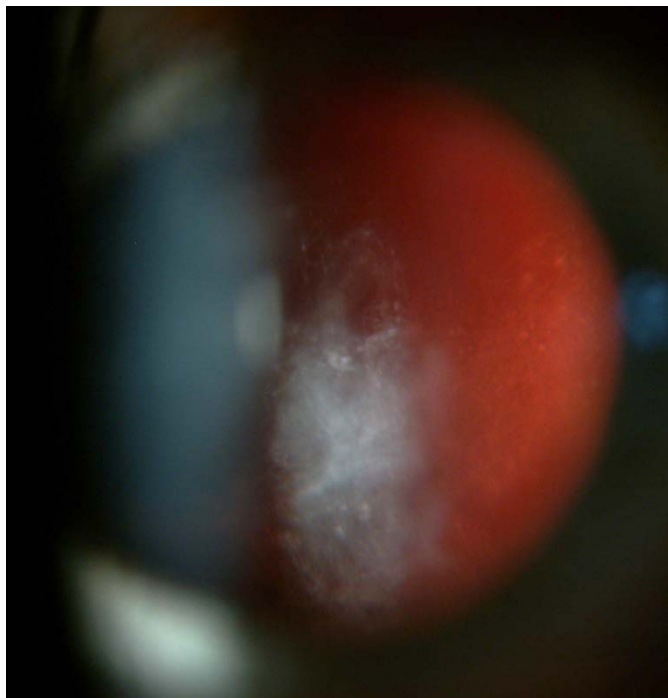
# Laserová vitreolýza sklovcových zápalov

- spojené s PVD = Weissov prstenec
- centreline chumáčovité zákaly
- centreline vláknité zákaly

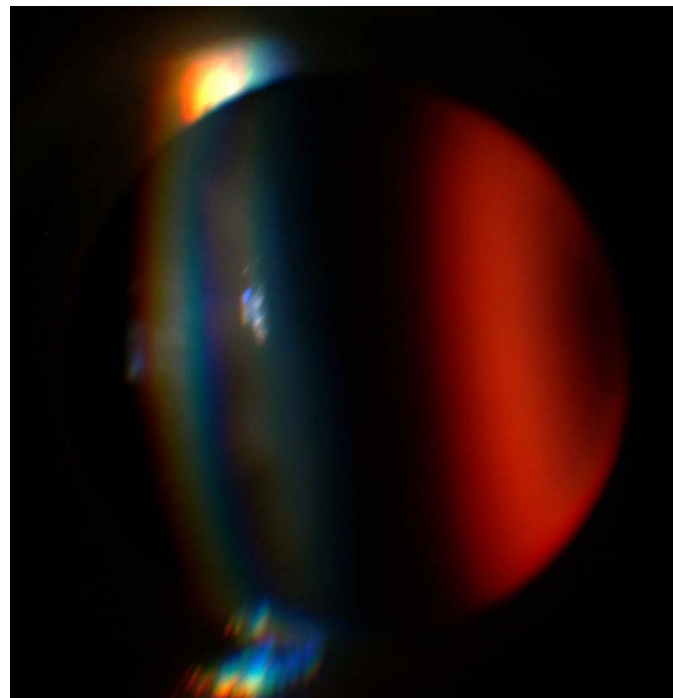


# Laserová vitreolýza sklovcových zápalov

Pred



Po



# **OCHORENIA SIETNICE**

- 1. Cievne a metabolické choroby sietnice**
- 2. Degeneratívne a dystrofické ochorenia sietnice**

# OCHORENIA SIETNICE

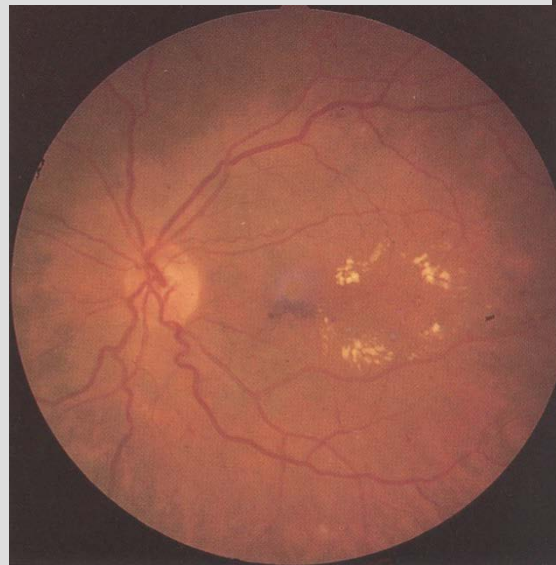
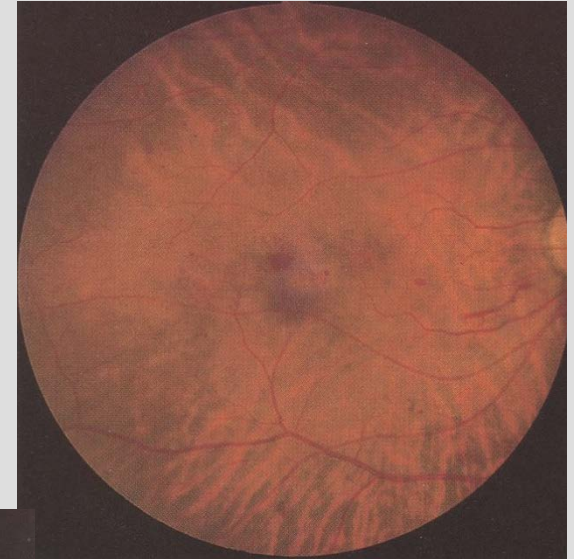
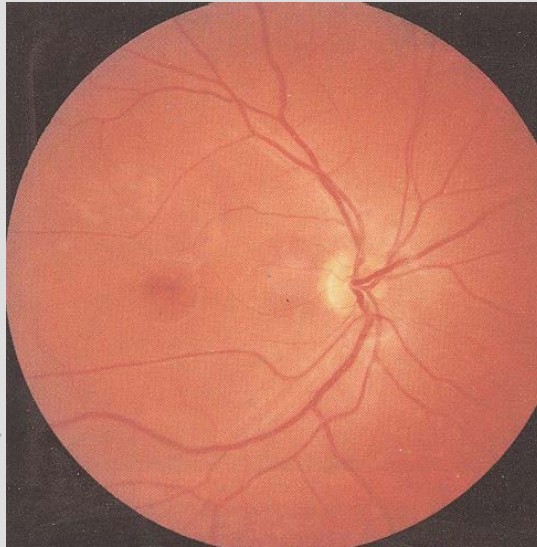
## 1. Cievne choroby sietnice

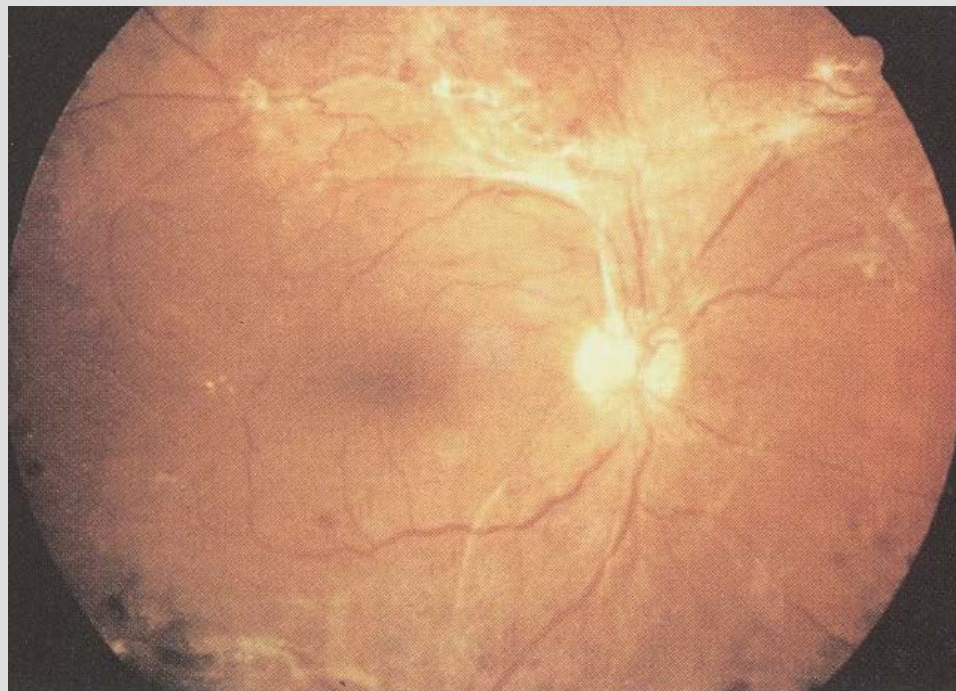
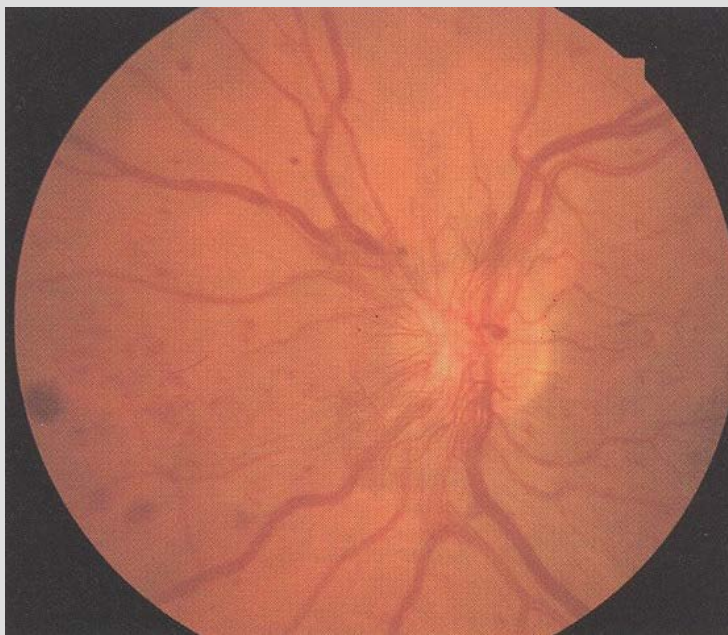
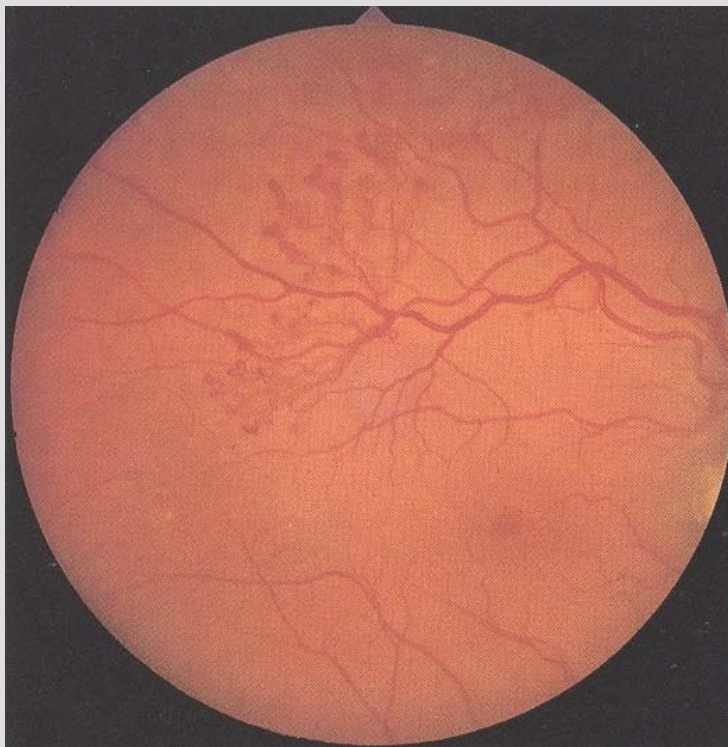
- a. diabetická retinopatia
- b. oklúzie sietnicových vén
- c. oklúzie sietnicových artérií
- d. hypertonická retinopatia
- e. retinopatie pri krvných ochoreniach
- f. retinopatia nedonosených
- g. iné cievne ochorenia sietnice

# Klinický obraz DR

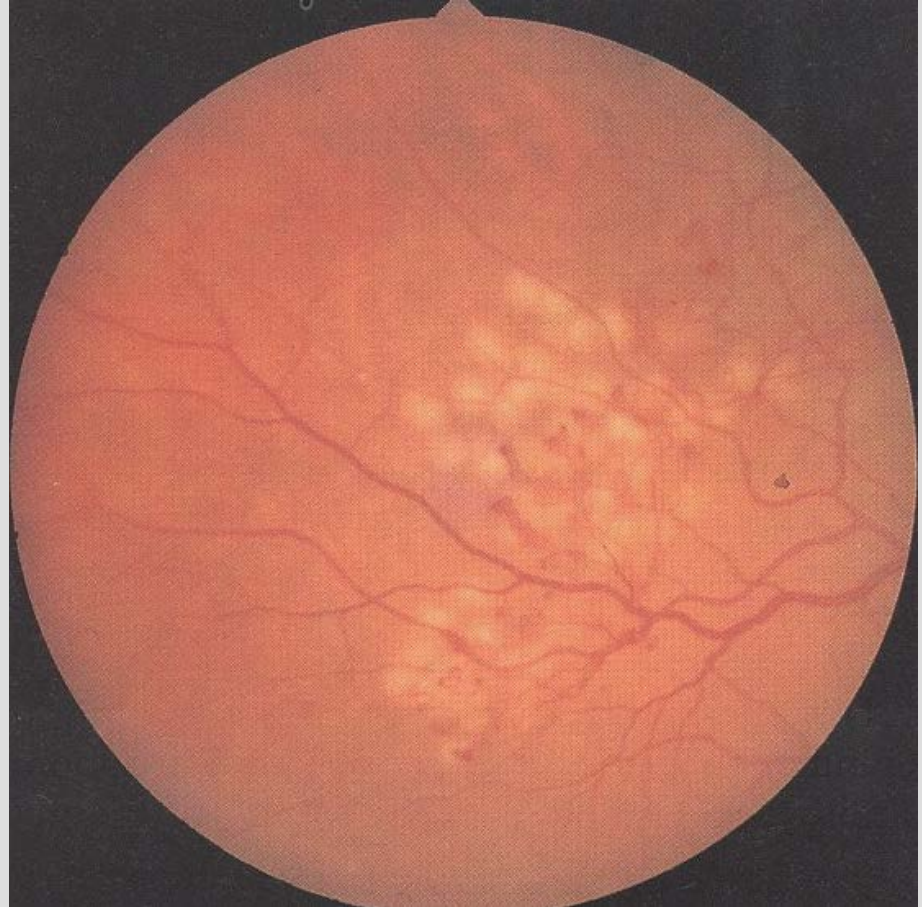
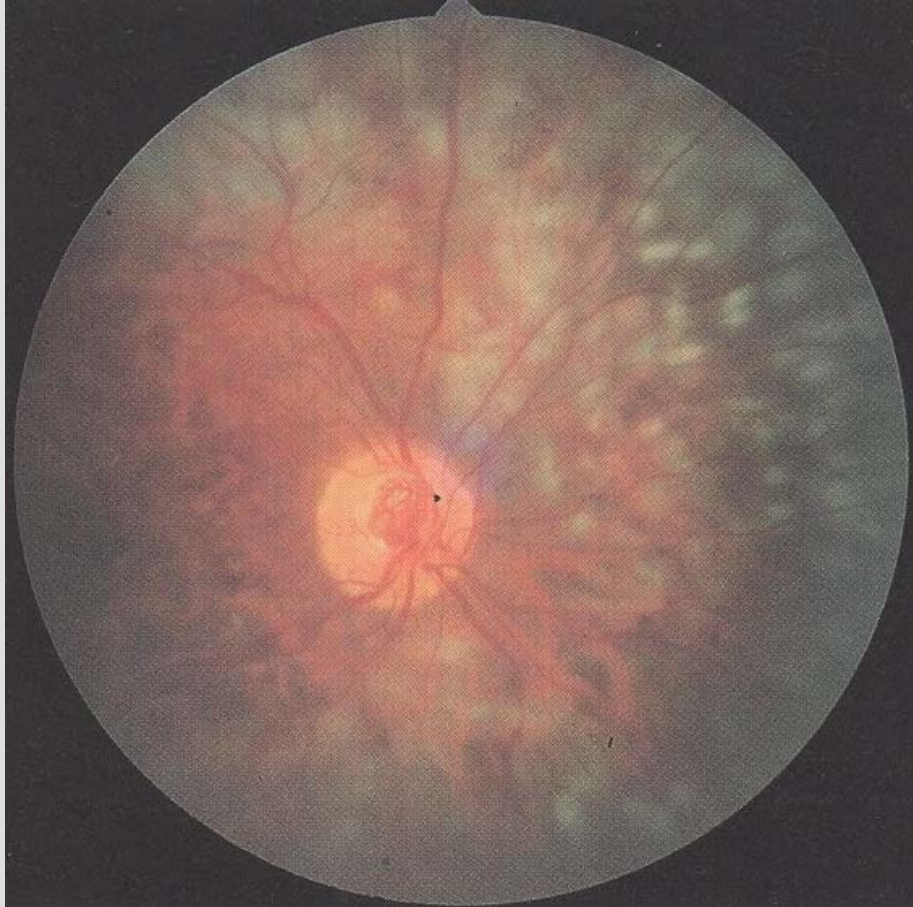
## ☐ NPDR

1. mikroaneuryzmy
2. hemorágie
3. tvrdé exsudáty
4. edém sietnice

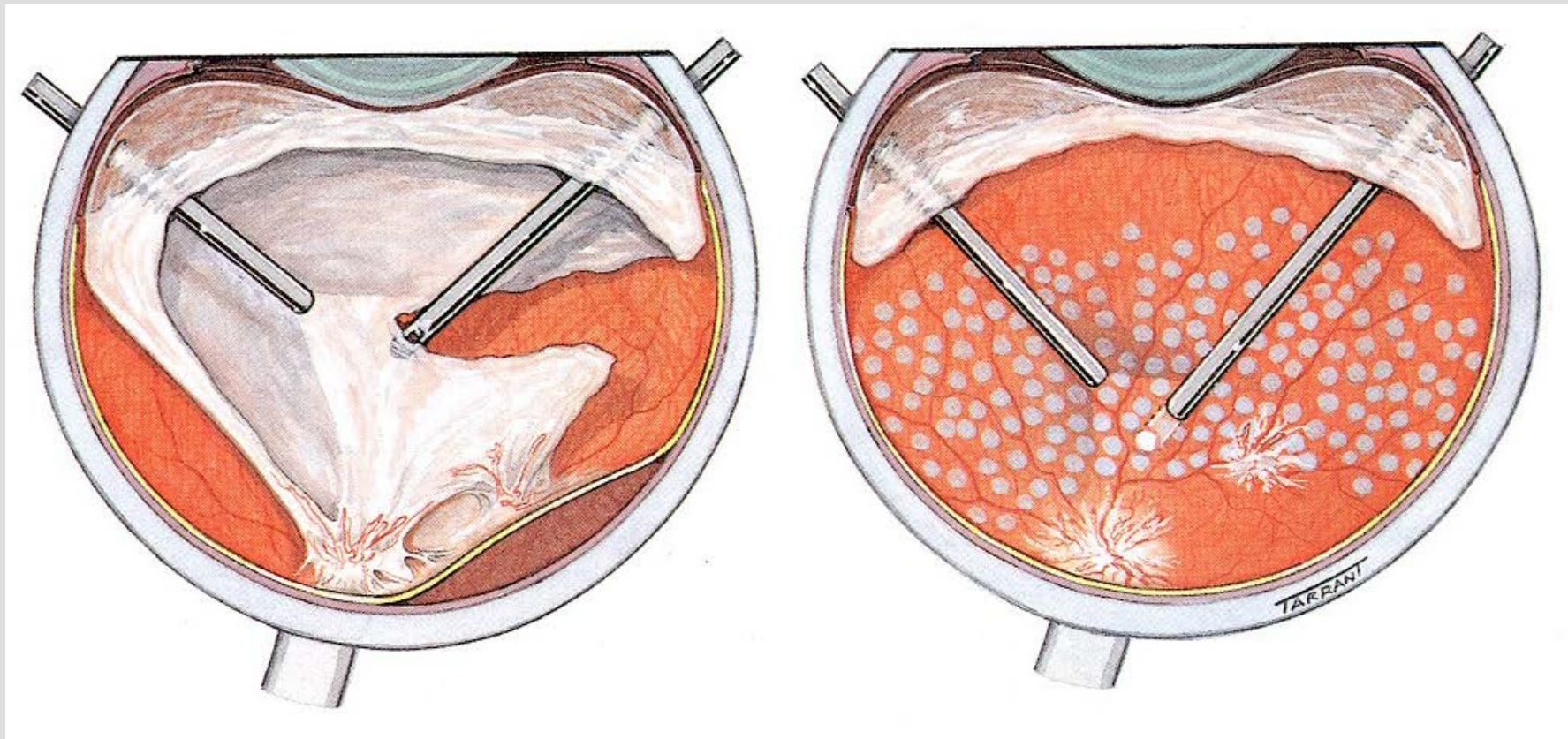


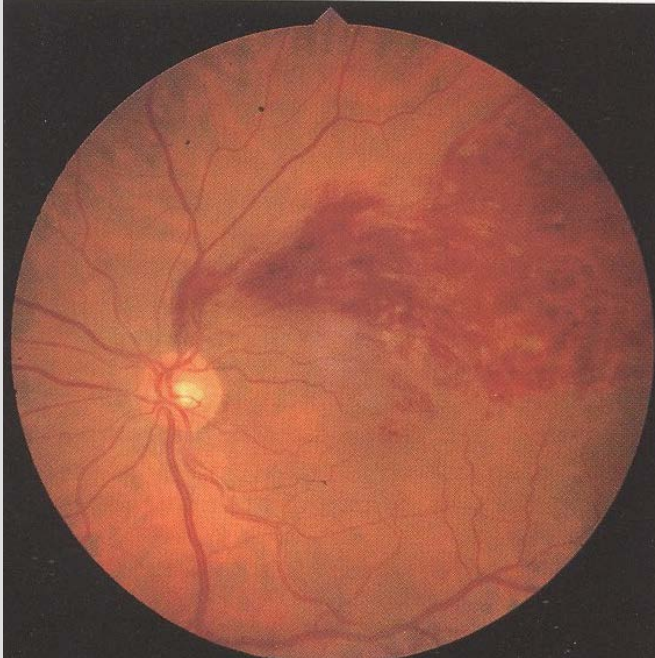
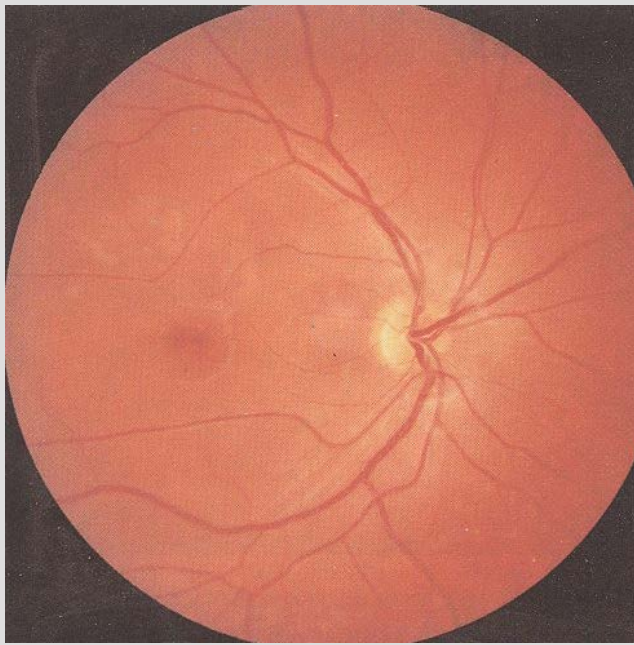


# Laserová liečba DR

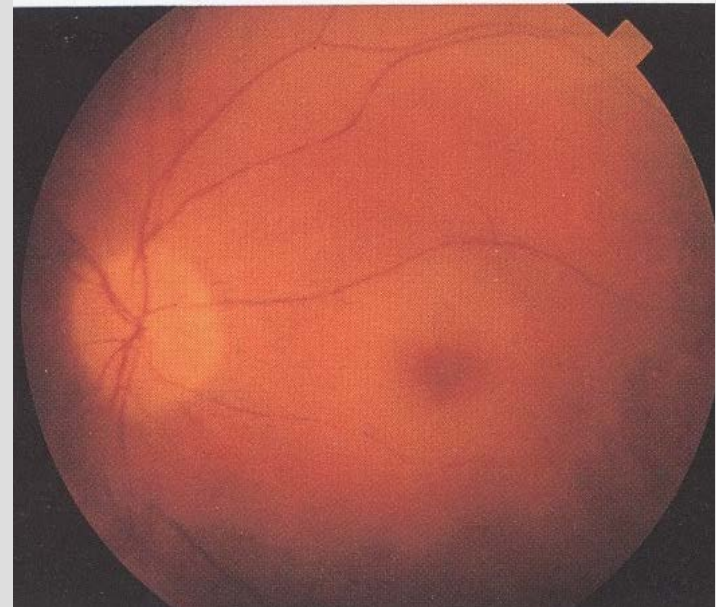
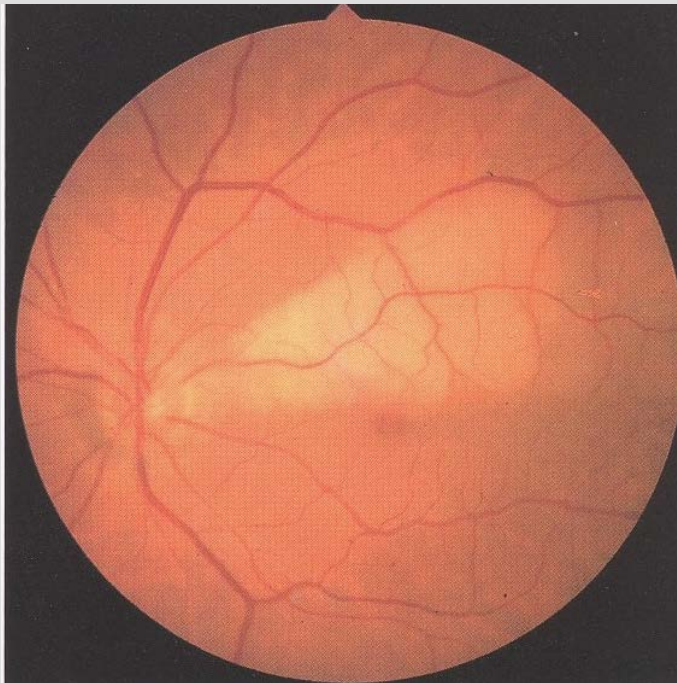
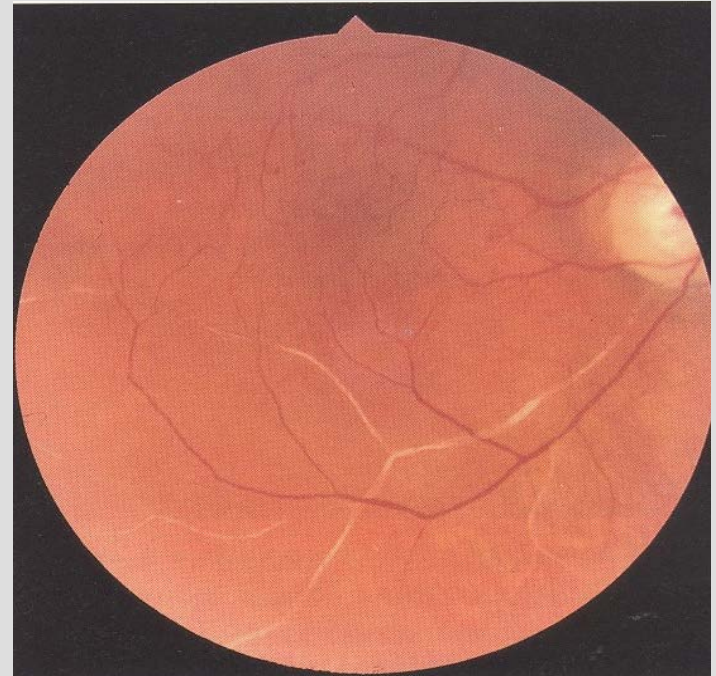
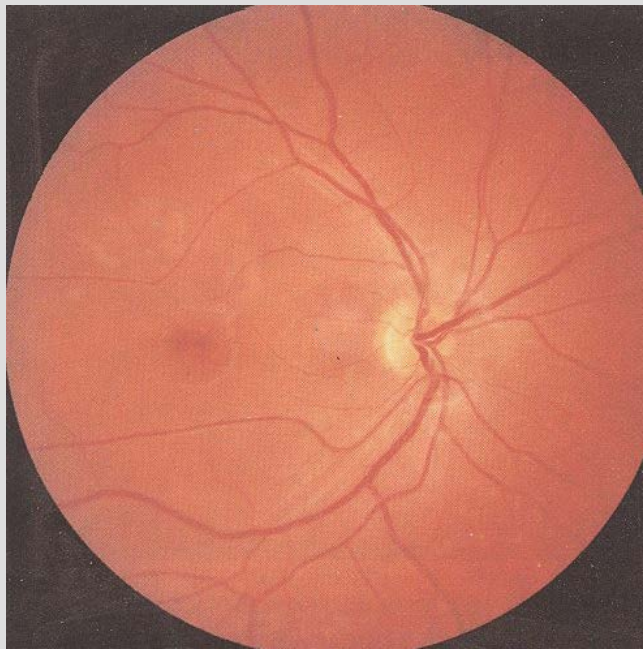


# Chirurgická liečba DR - PPV



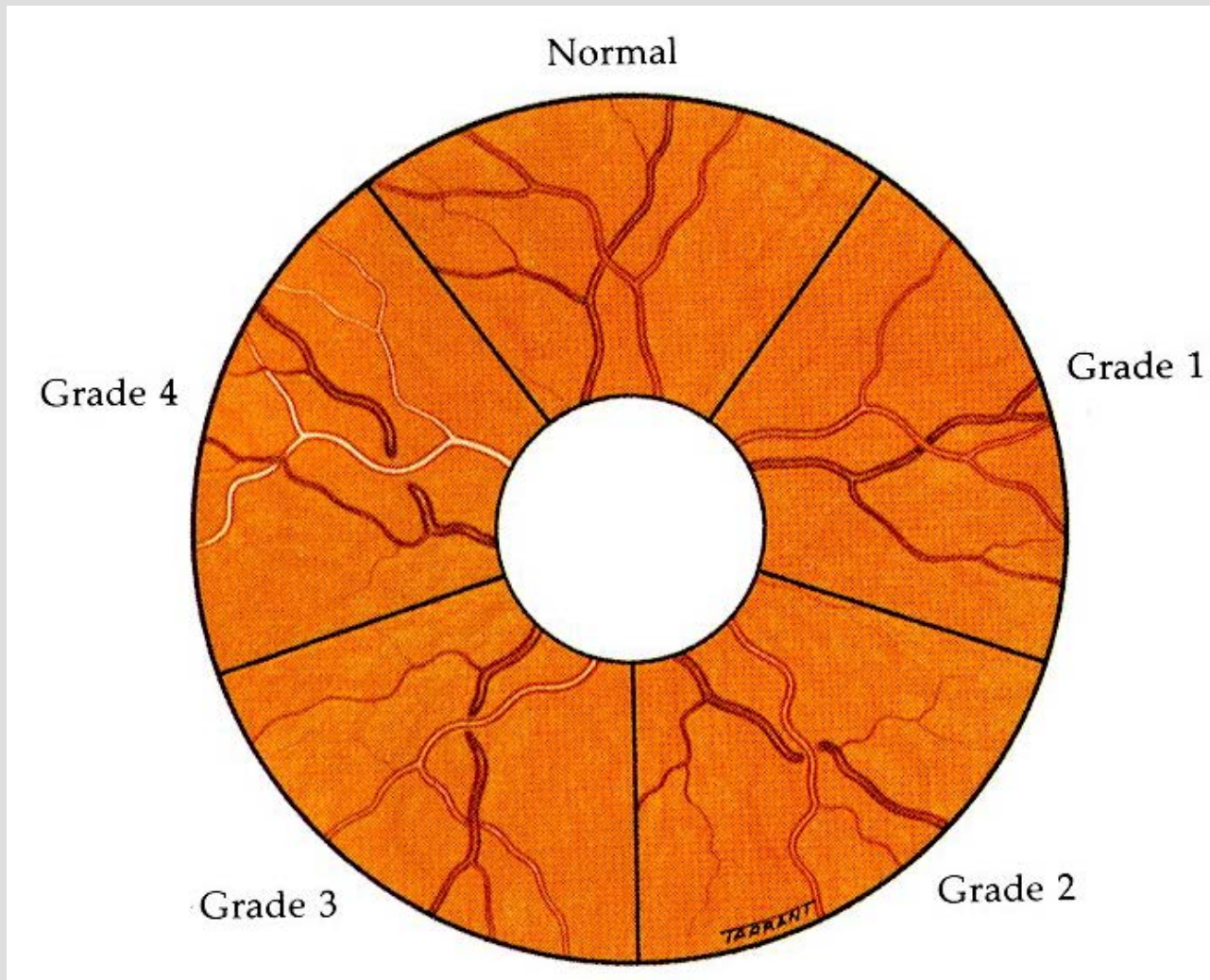


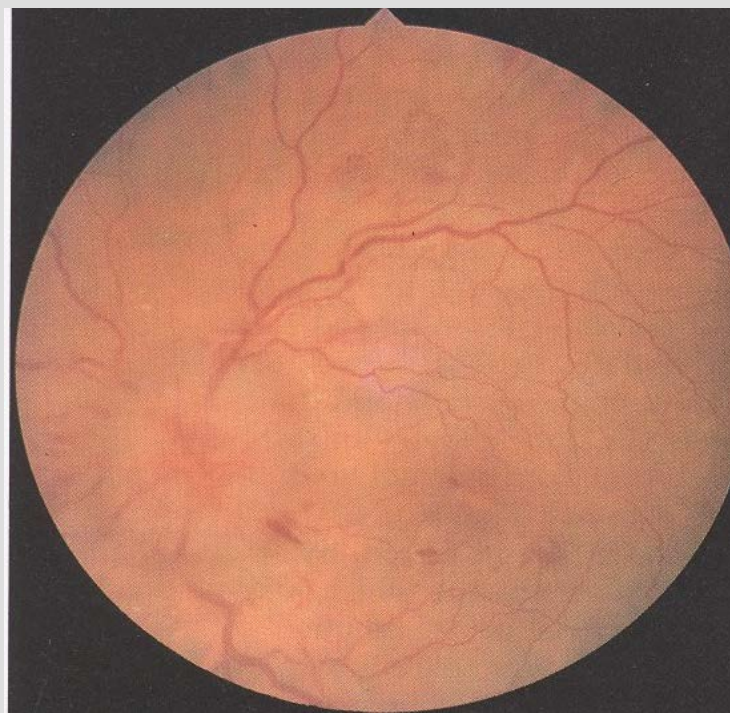
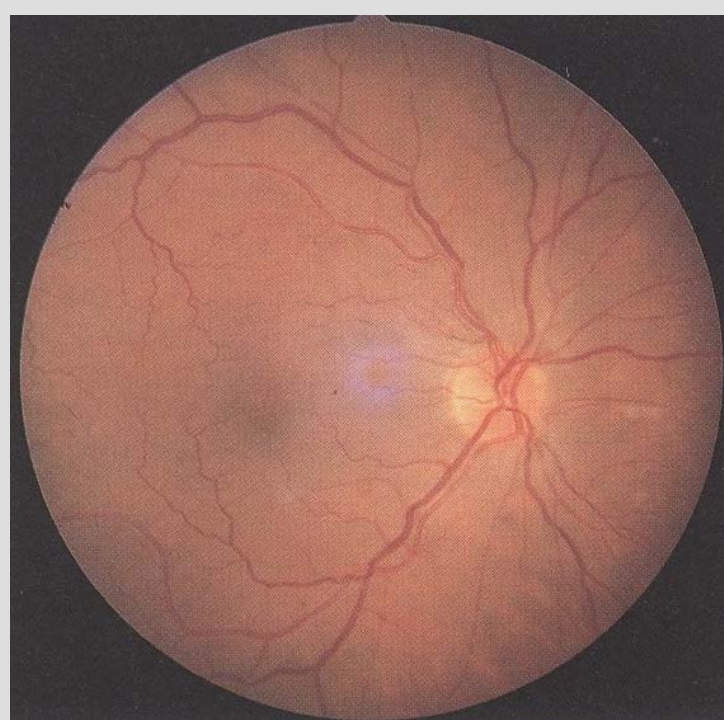
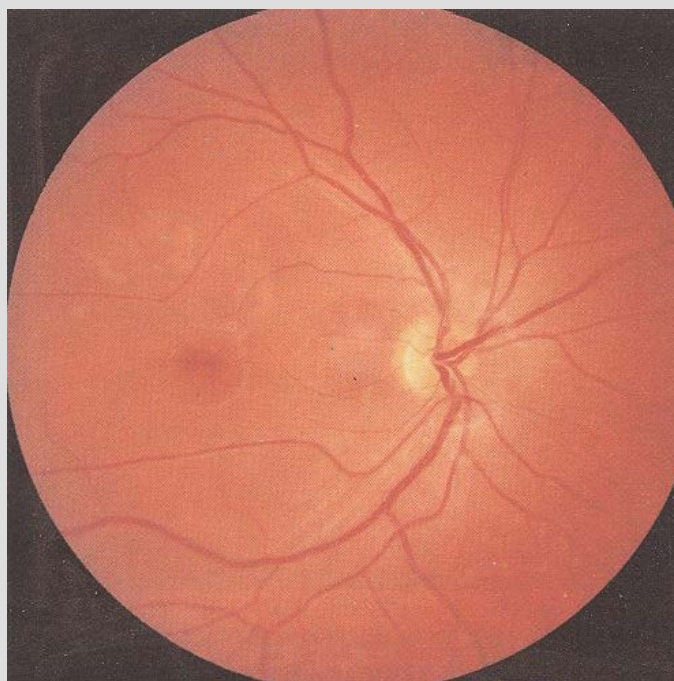
CRVO



CRAO

# 1.d. Hypertónická retinopatia (Retinopatia hypertónica)





VPDM



Normálny vizus



VPDM

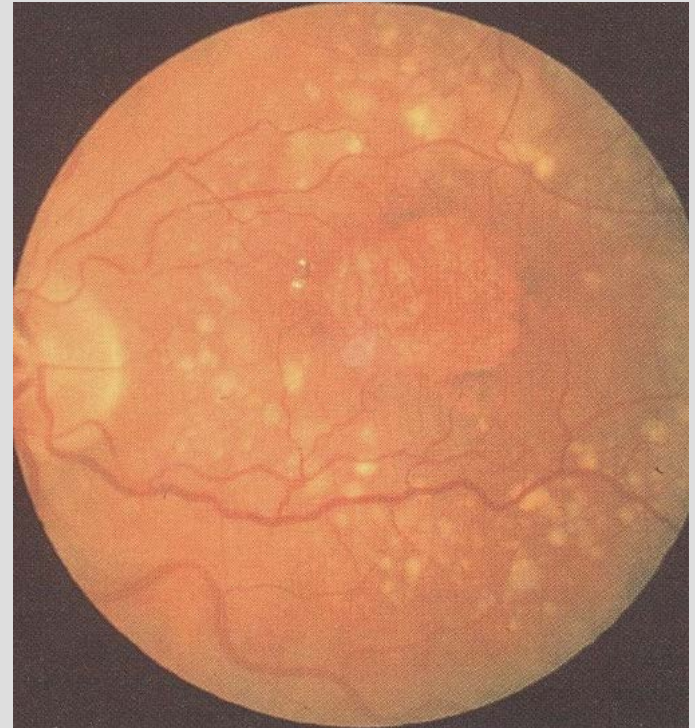


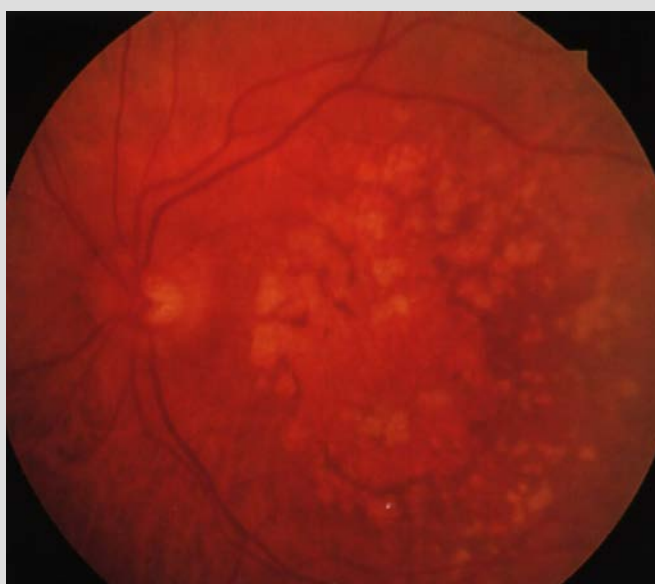
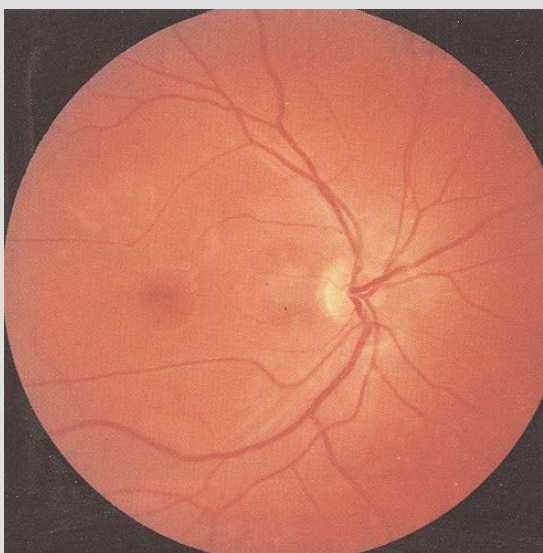


## 2.2. Vekom podmienená degenerácia makuly (VPDM)

### ☐ Suchá forma

- pomalý priebeh
- spomalenie –  
antioxidanty a lutein  
a zeaxantin
- vedie k vývoju praktickej slepoty





# □ ITV aplikácia lieku



Edém makuly

Ďakujem za pozornosť