

BUNKA

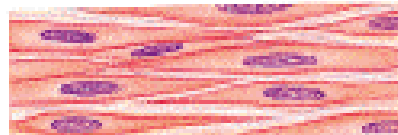
TKANIVO

ORGÁN

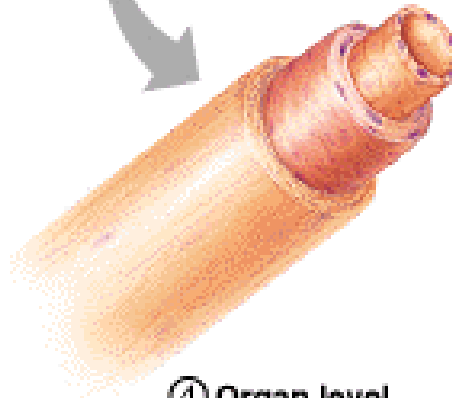
Smooth muscle cell



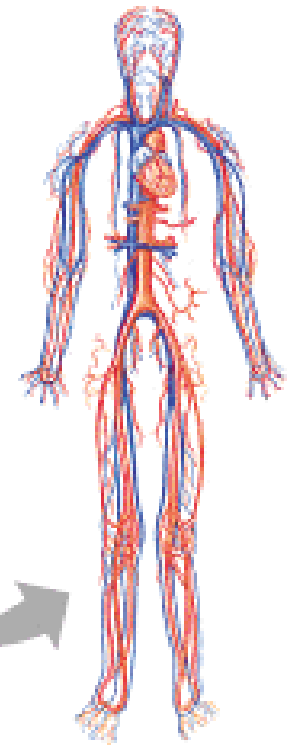
- ② **Cellular level**
Cells are made up of molecules



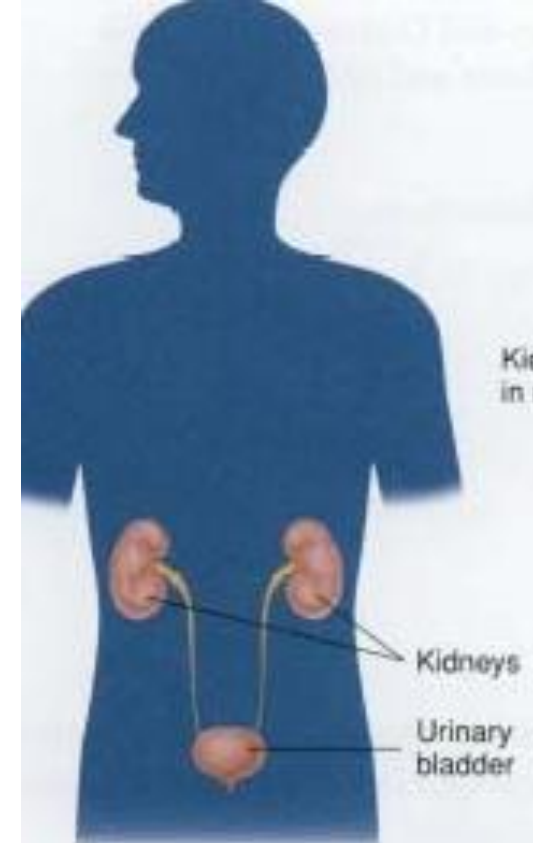
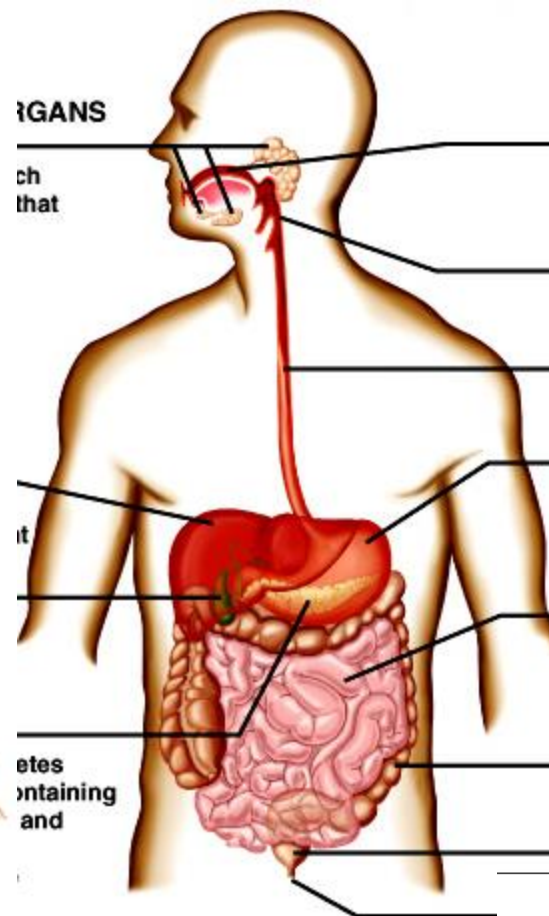
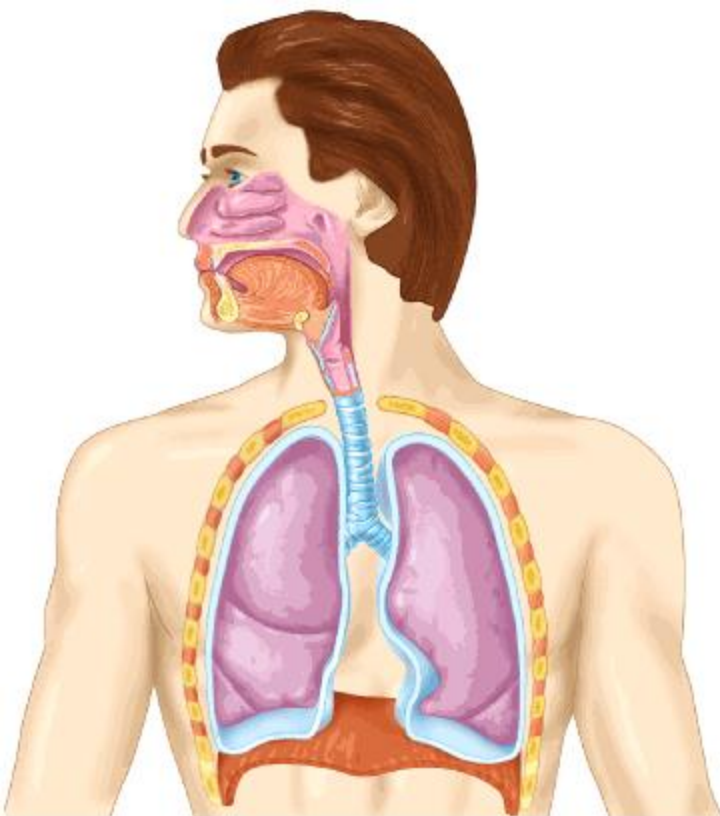
- ③ **Tissue level**
Tissues consist of similar types of cells



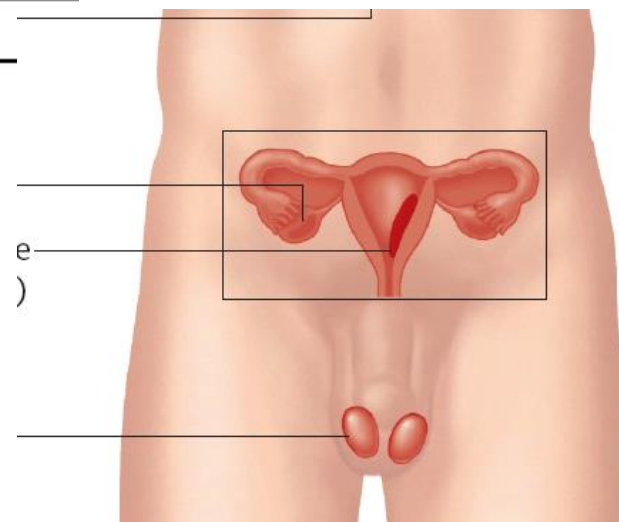
- ④ **Organ level**
Organs are made up of different types of tissues

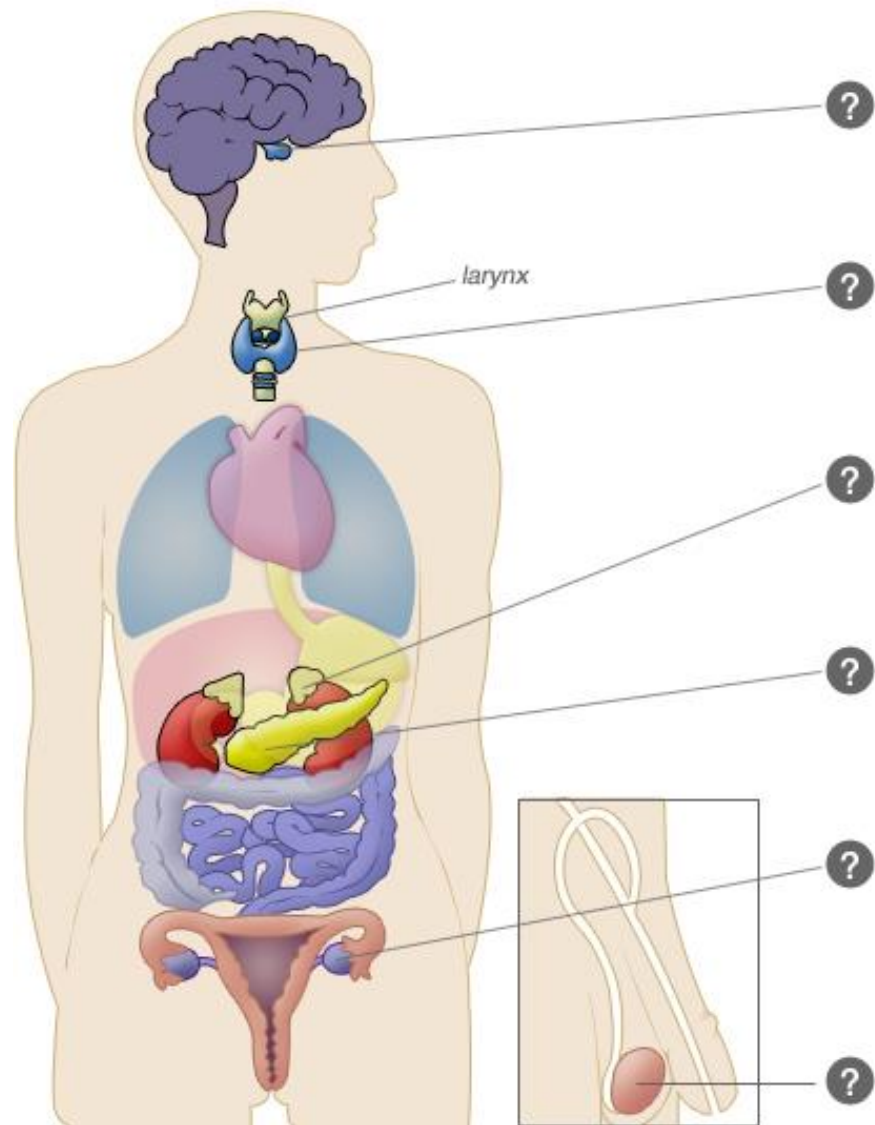
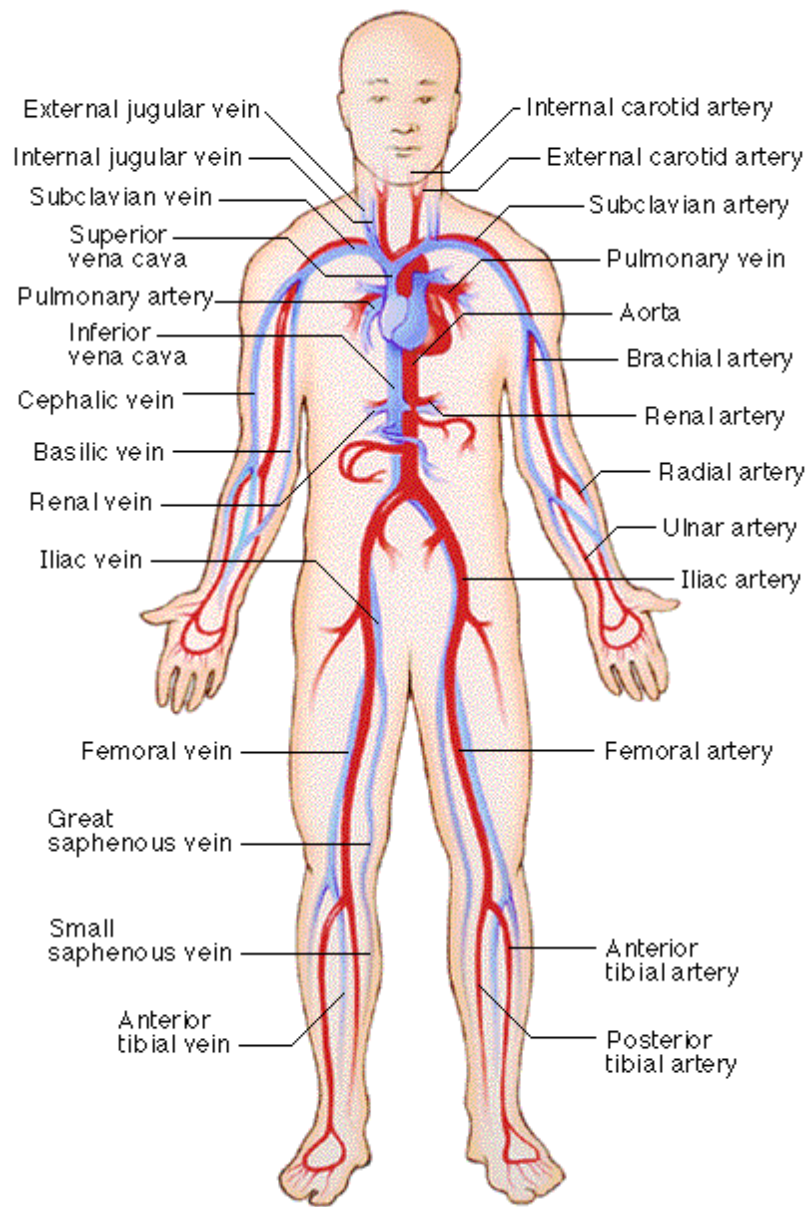


- ⑤ **Organ system level**
Organ systems consist of different organs that work together closely



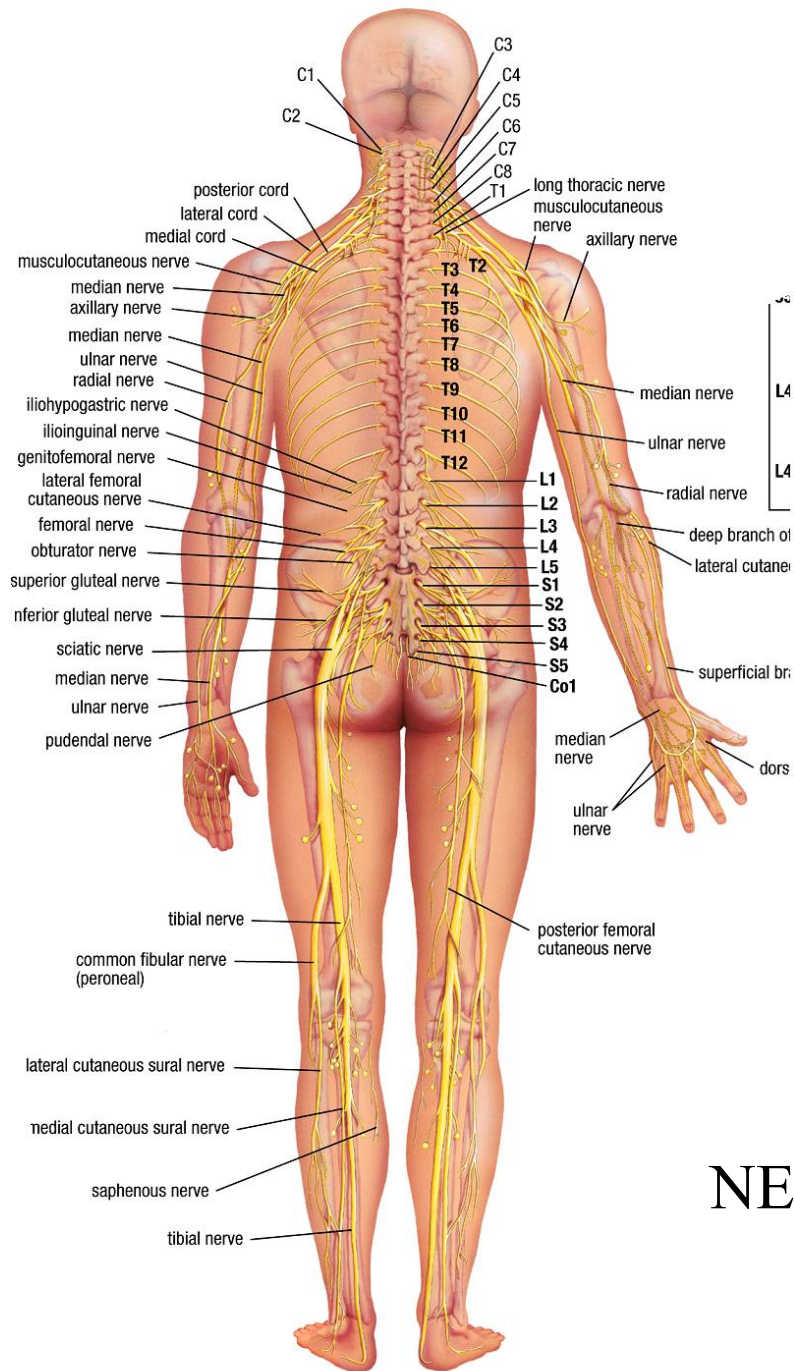
Systémy orgánov:
 DÝCHACÍ
 TRÁVIACÍ
 MOČOVÝ
 POHLAVNÝ





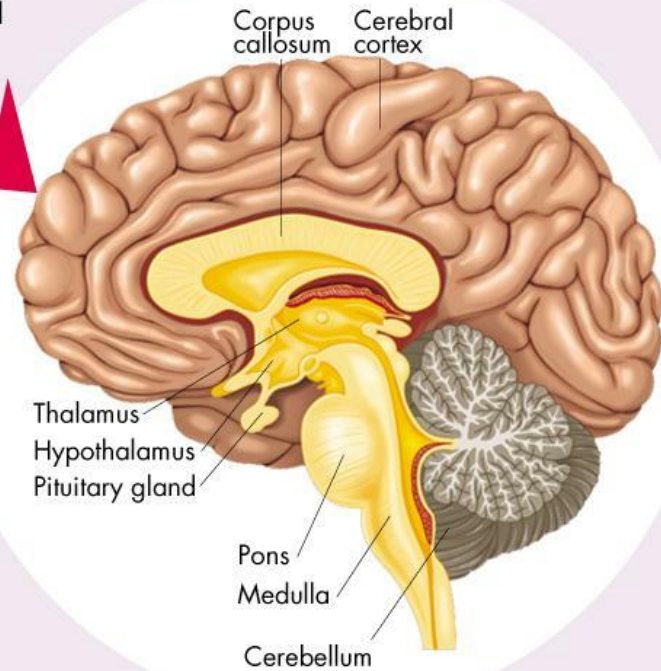
**SRDCOVO-CIEVNY
(KARDIOVASKULÁRNY)**

**ŽLÁZY S VNÚTORNÝM VYLUČOVANÍM
(ENDOKRINNÝ)**



Central Nervous System (brown)

cord



Peripheral Nervous System

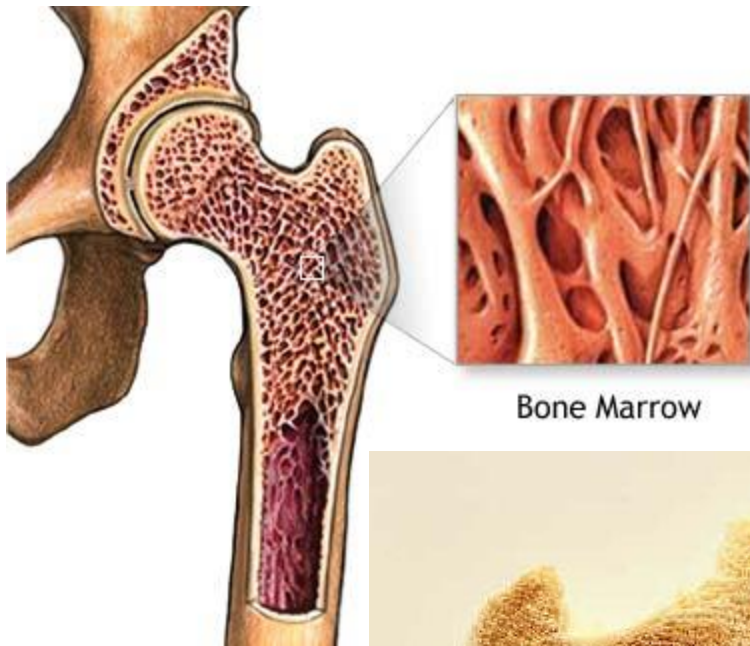
(blue): Controls voluntary muscles and conveys sensory information to the central nervous system

Autonomic (red): Controls involuntary muscles

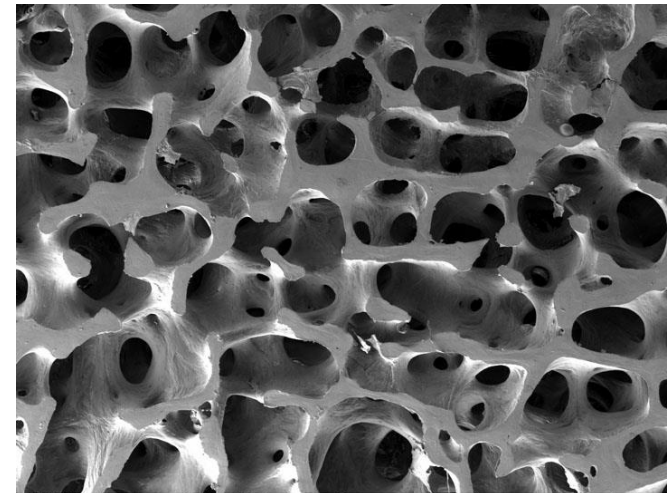
Sympathetic: Expends energy

Parasympathetic: Conserves energy

NERVOVÝ SYSTÉM



Bone Marrow

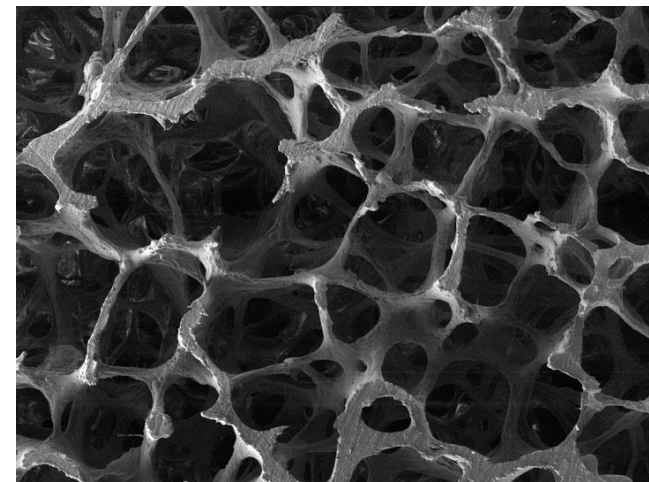


SEM MAG: 60 x
HV: 10.0 kV
VAC: HiVac

DET: SE Detector
DATE: 01/21/04
Device: TS5130MM

2 mm

Vega ©Tescan
Digital Microscopy Imaging

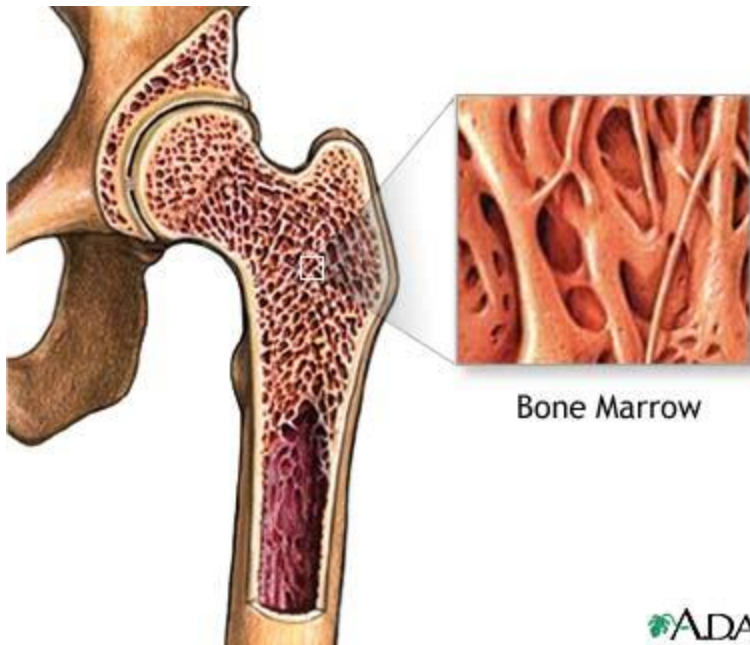


SEM MAG: 50 x
HV: 10.0 kV
VAC: HiVac

DET: SE Detector
DATE: 01/20/04
Device: TS5130MM

2 mm

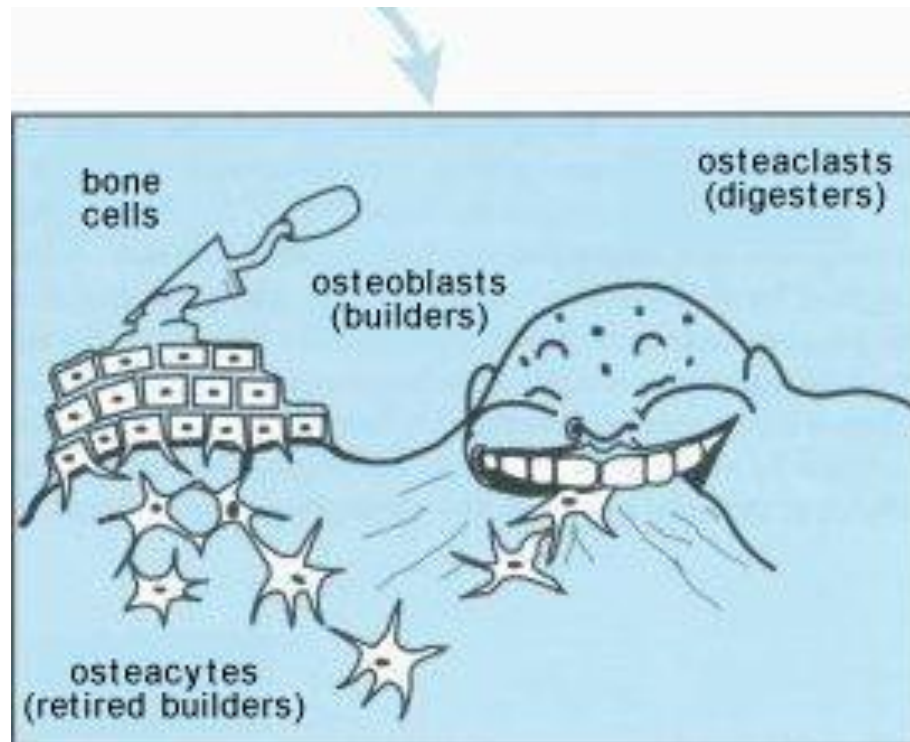
Vega ©Tescan
Digital Microscopy Imaging



Bone Marrow

ADAM.





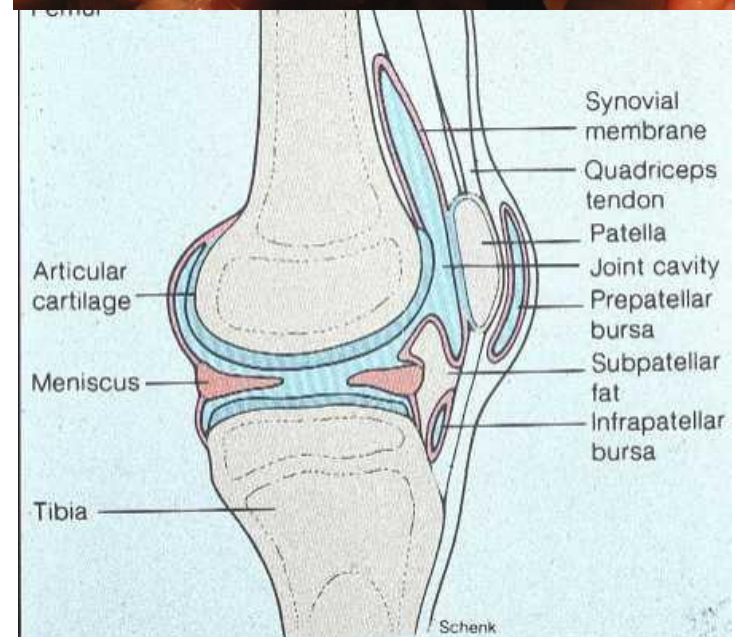
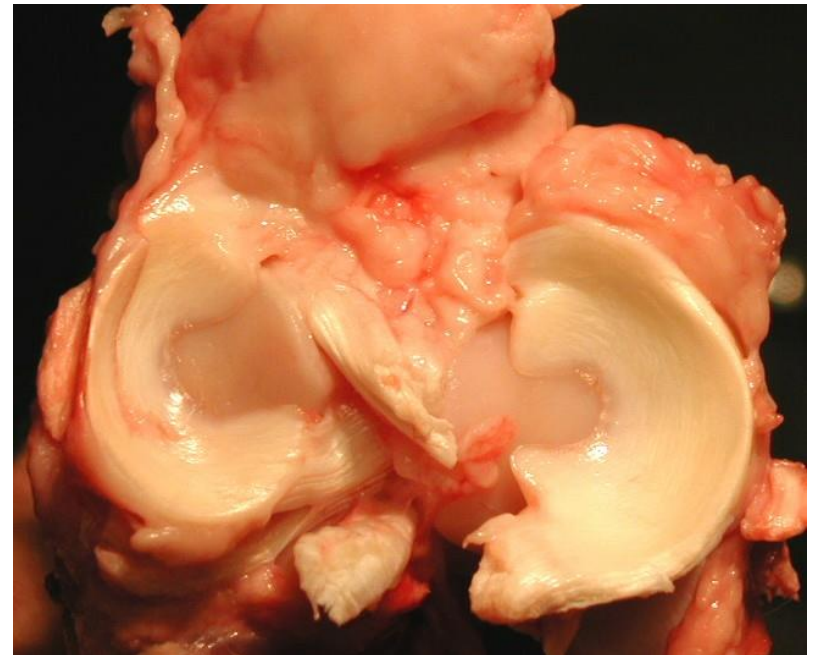
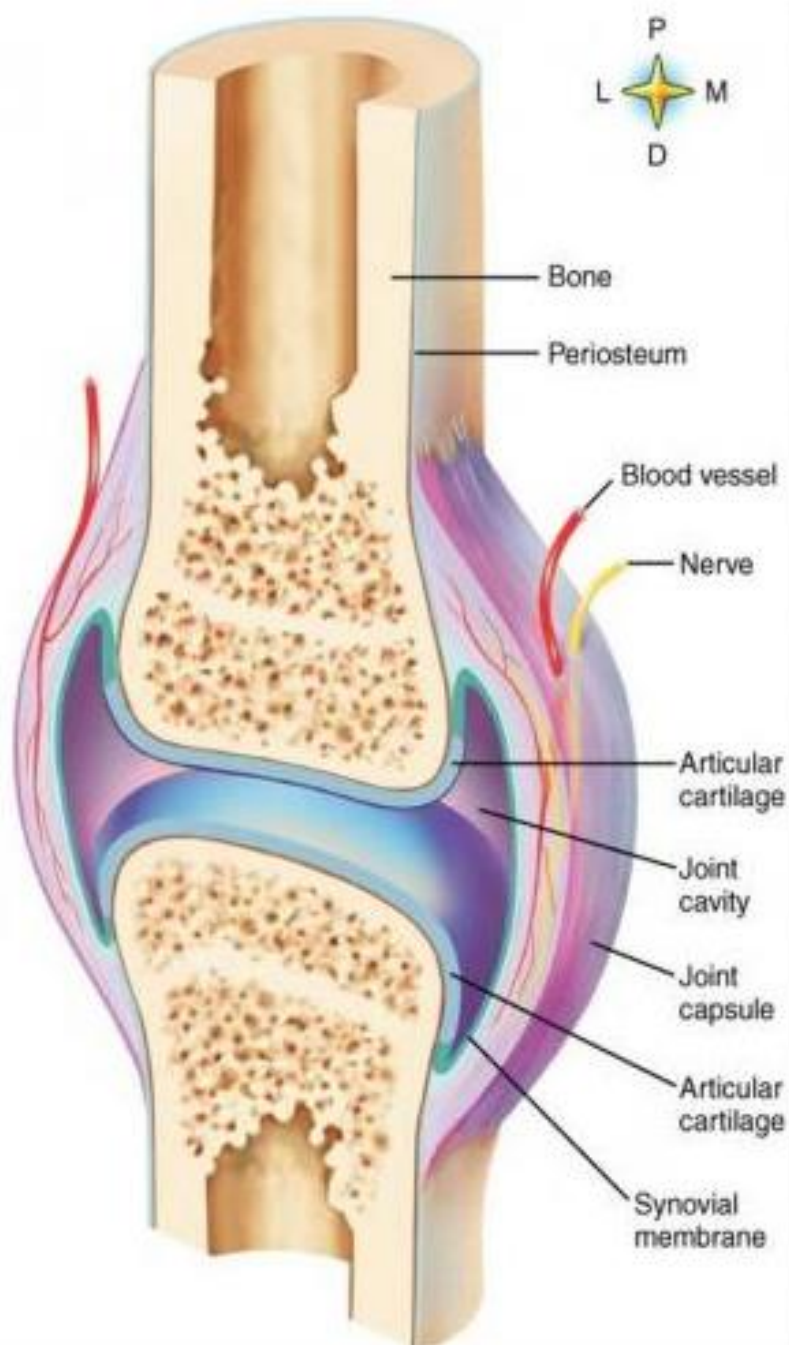
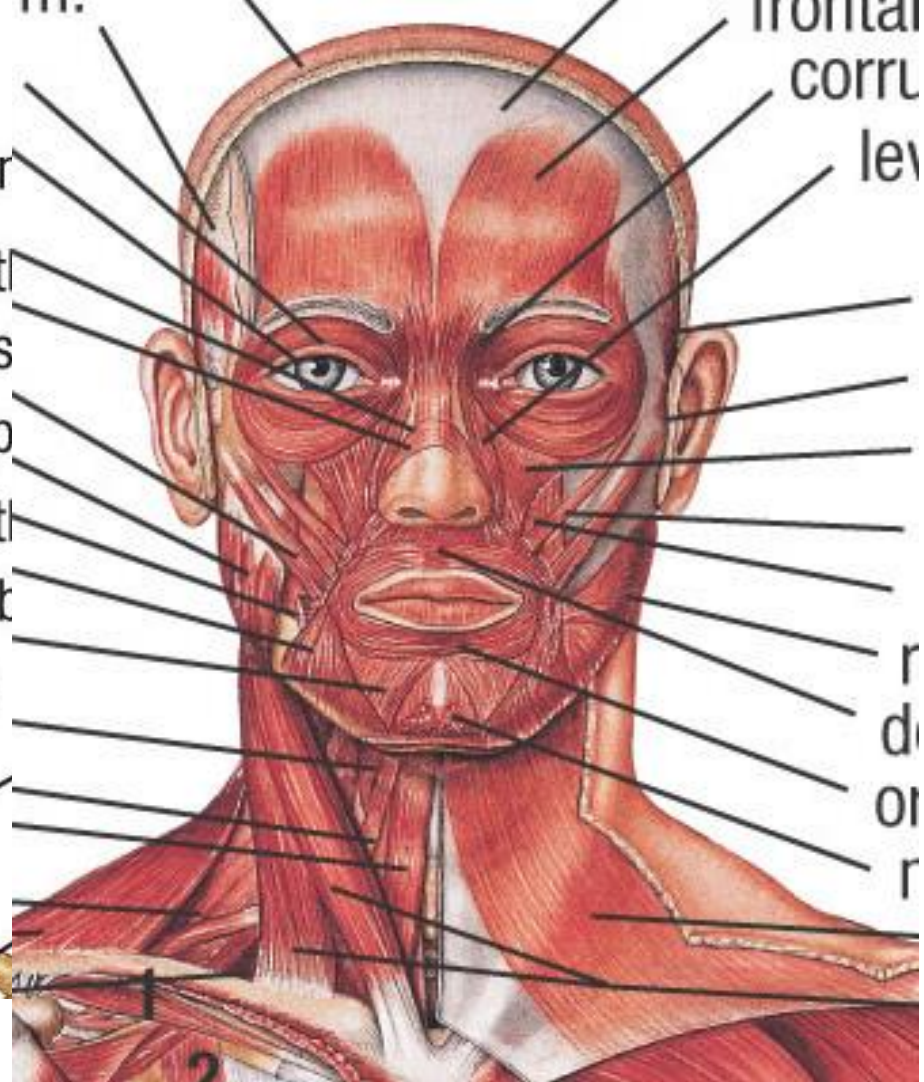
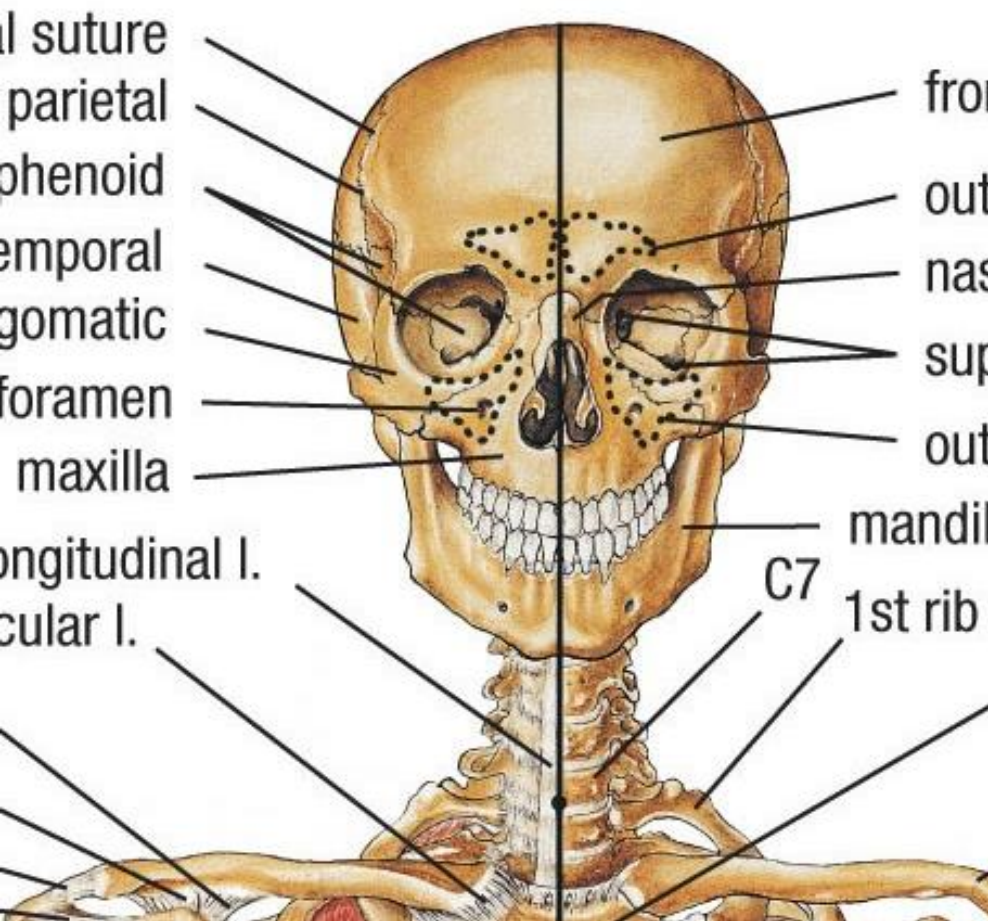
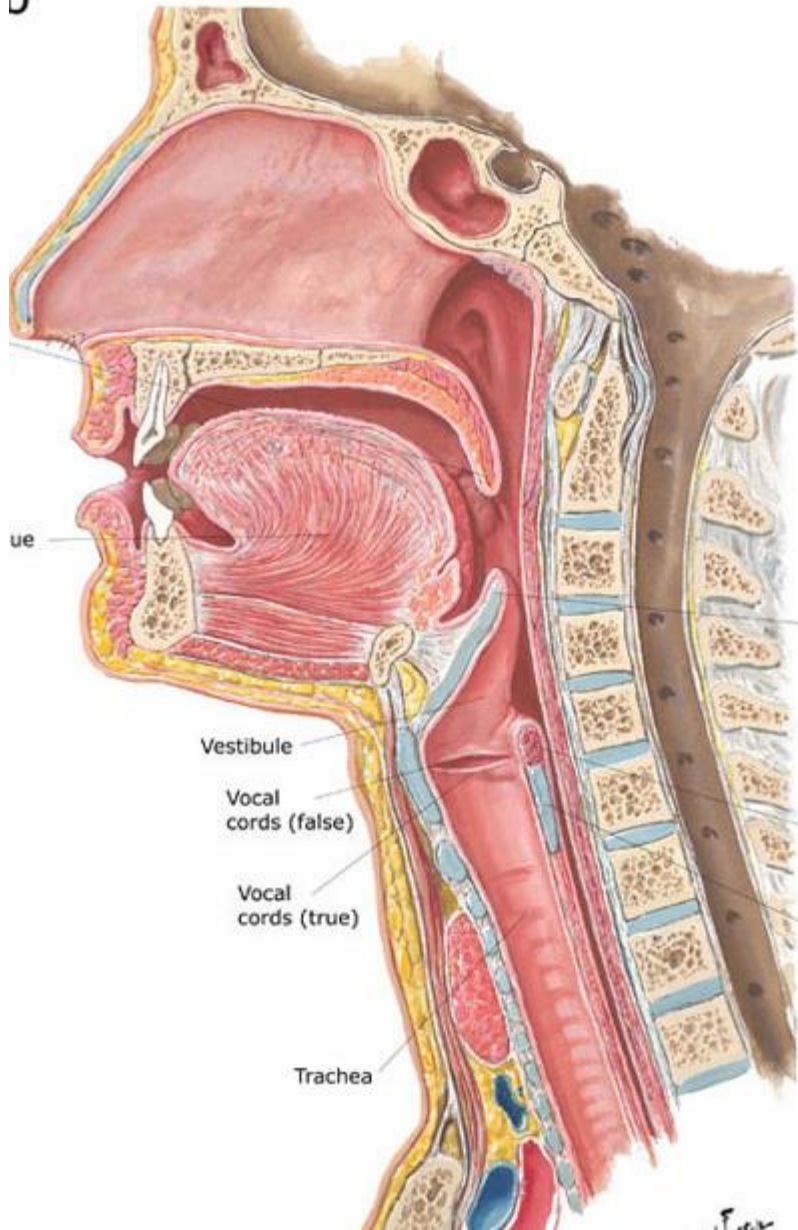


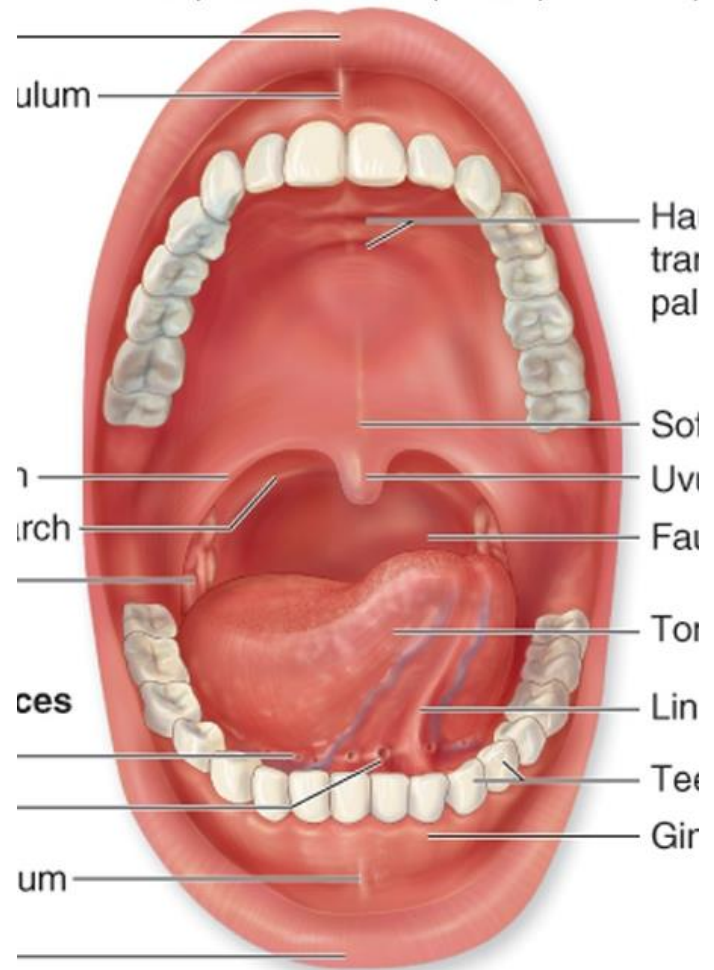
Figure 8.7 A diarthrotic joint is represented by this diagrammatic lateral view of the knee joint.



b



© The McGraw-Hill Companies, Inc. Permission required for reproduction or display



Copyright © The McGraw-Hill Companies



Frontal sinus

Frontal bone

Optic foramen

Lesser wing of sphenoid

Anterior clinoid process

Sphenoid bone

Greater wing of sphenoid

Temporal bone

Posterior clinoid process



Sphenoid bone

Optic foramen

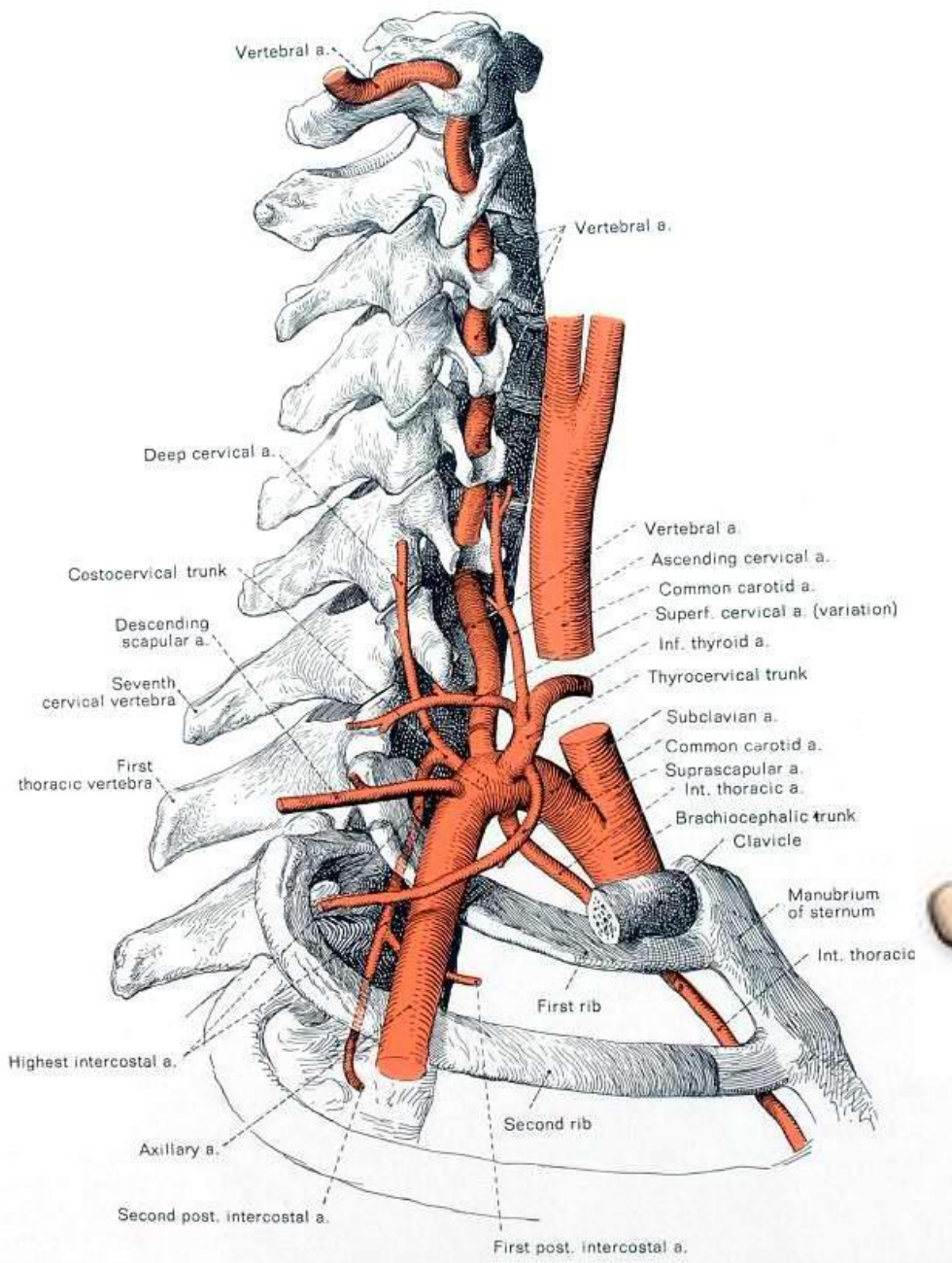
Optic sinus

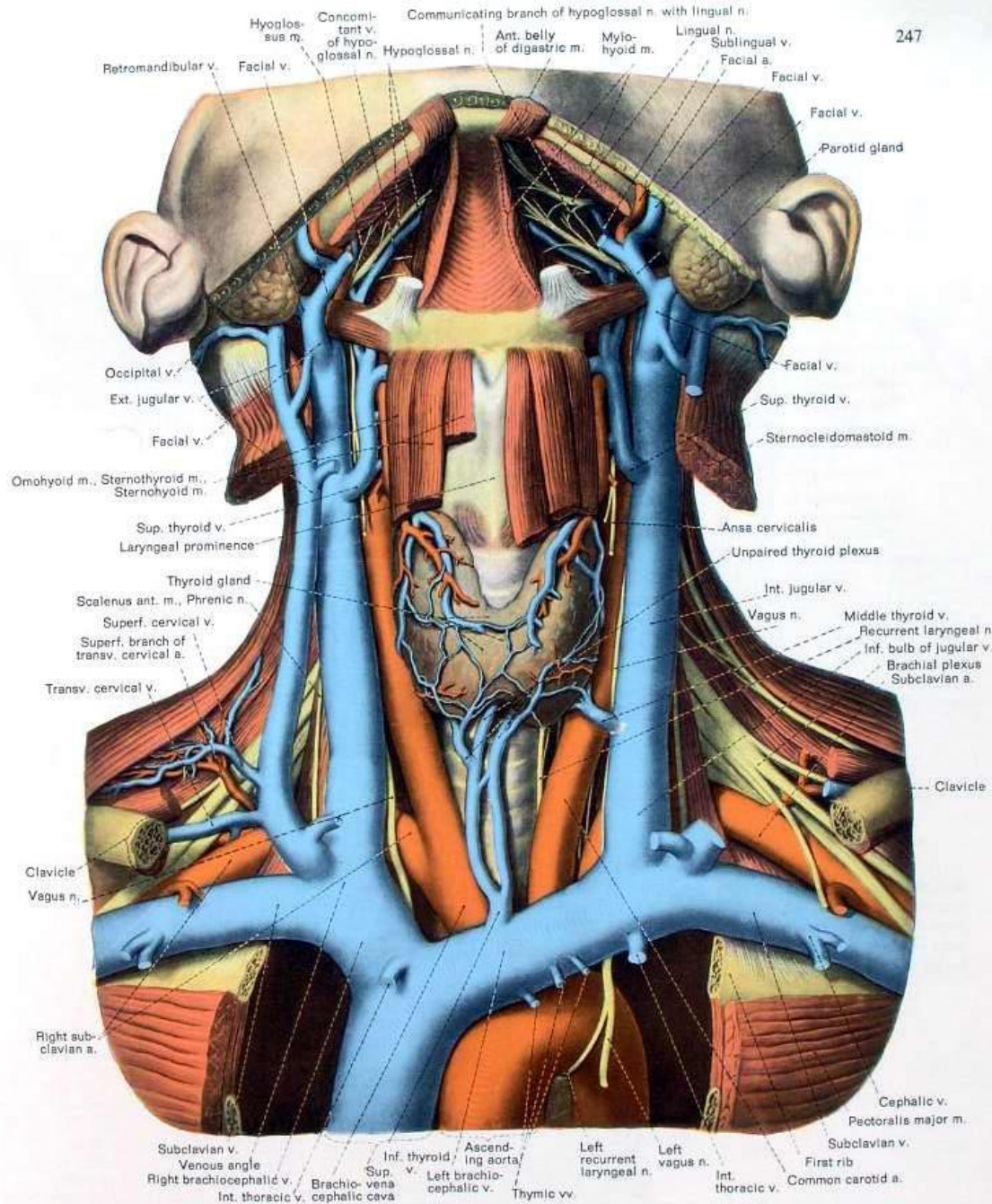
Optic canal

Optic nerve

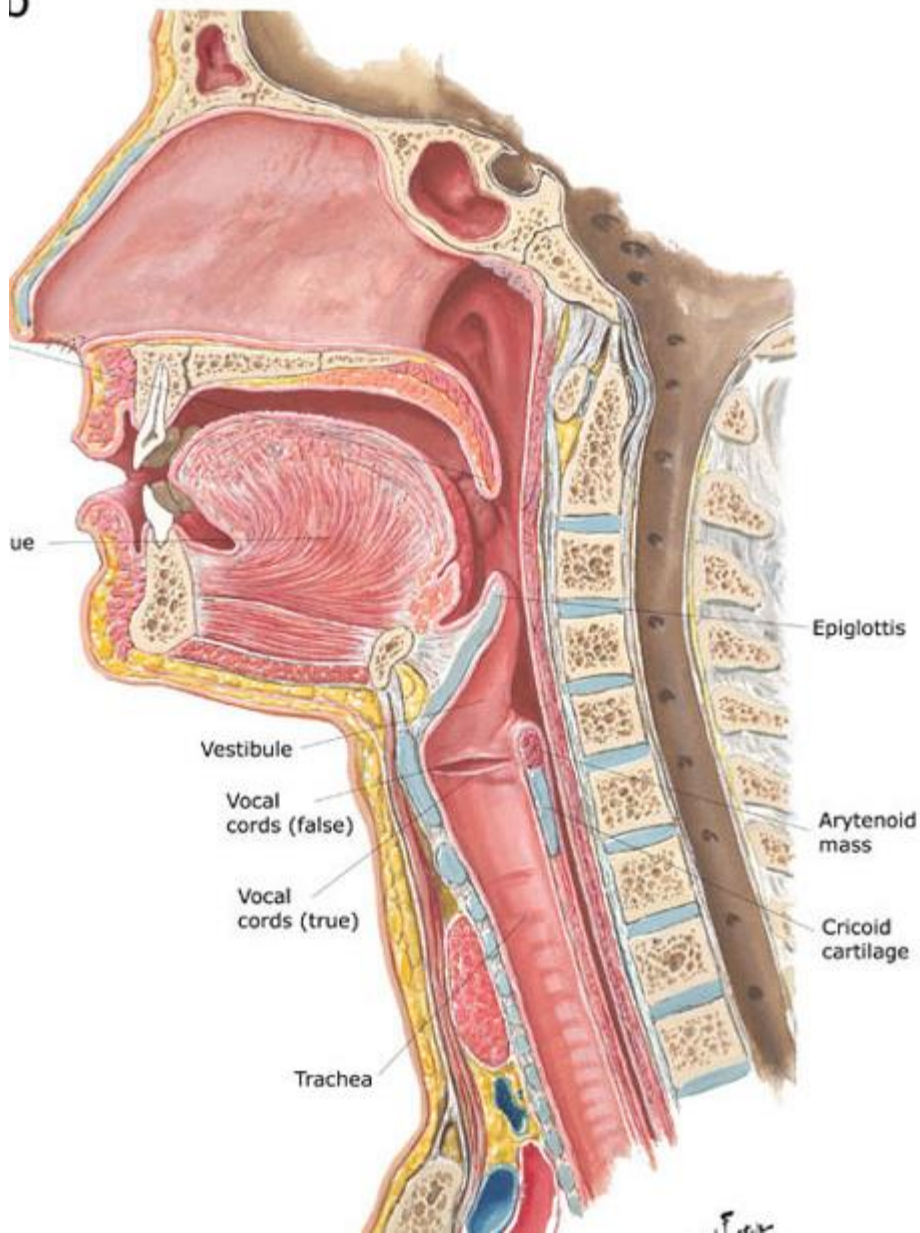
Optic chiasm

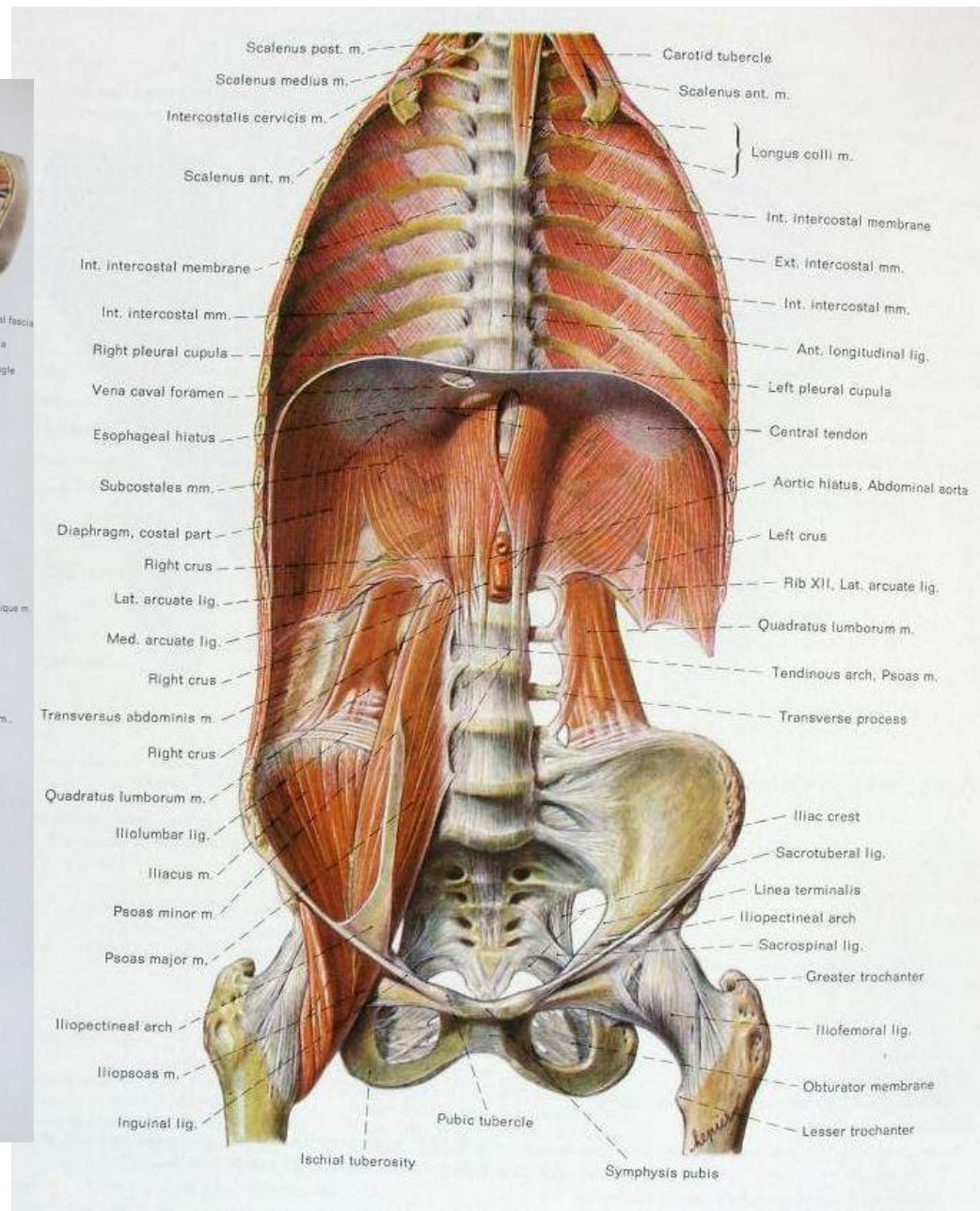
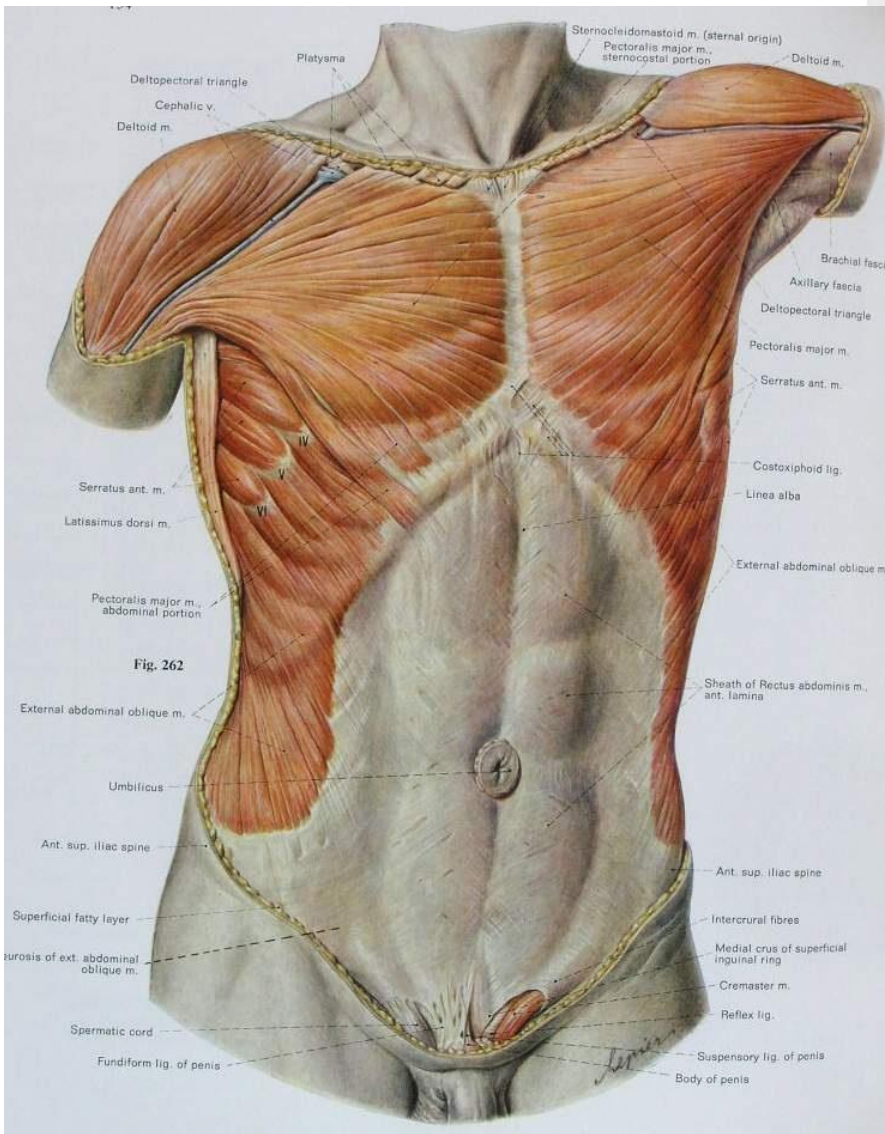


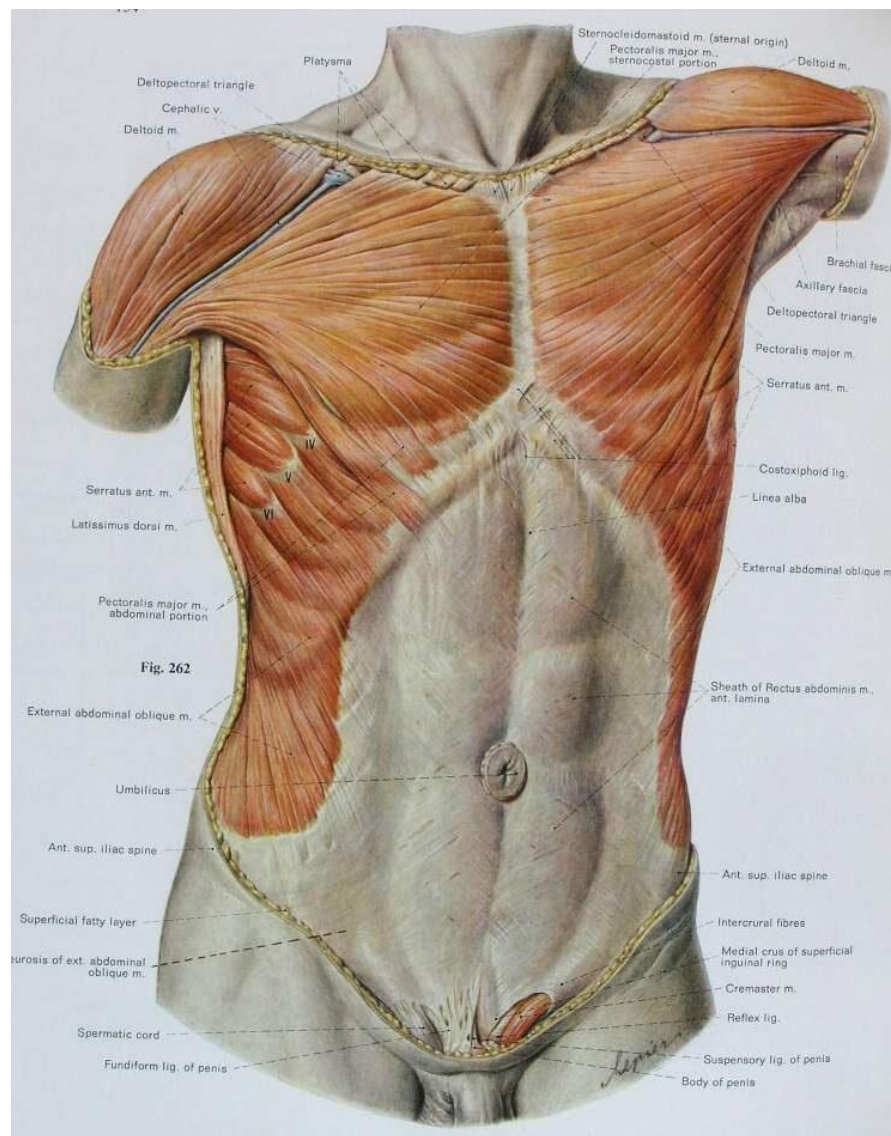
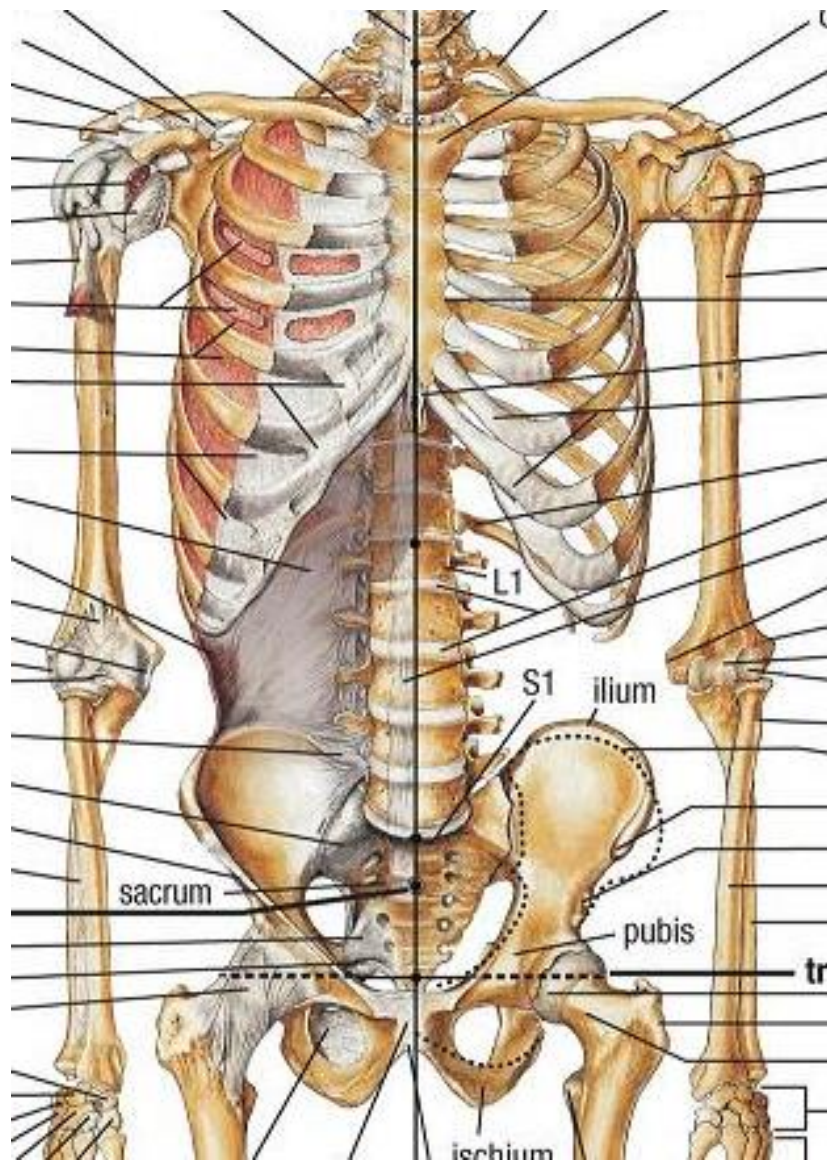


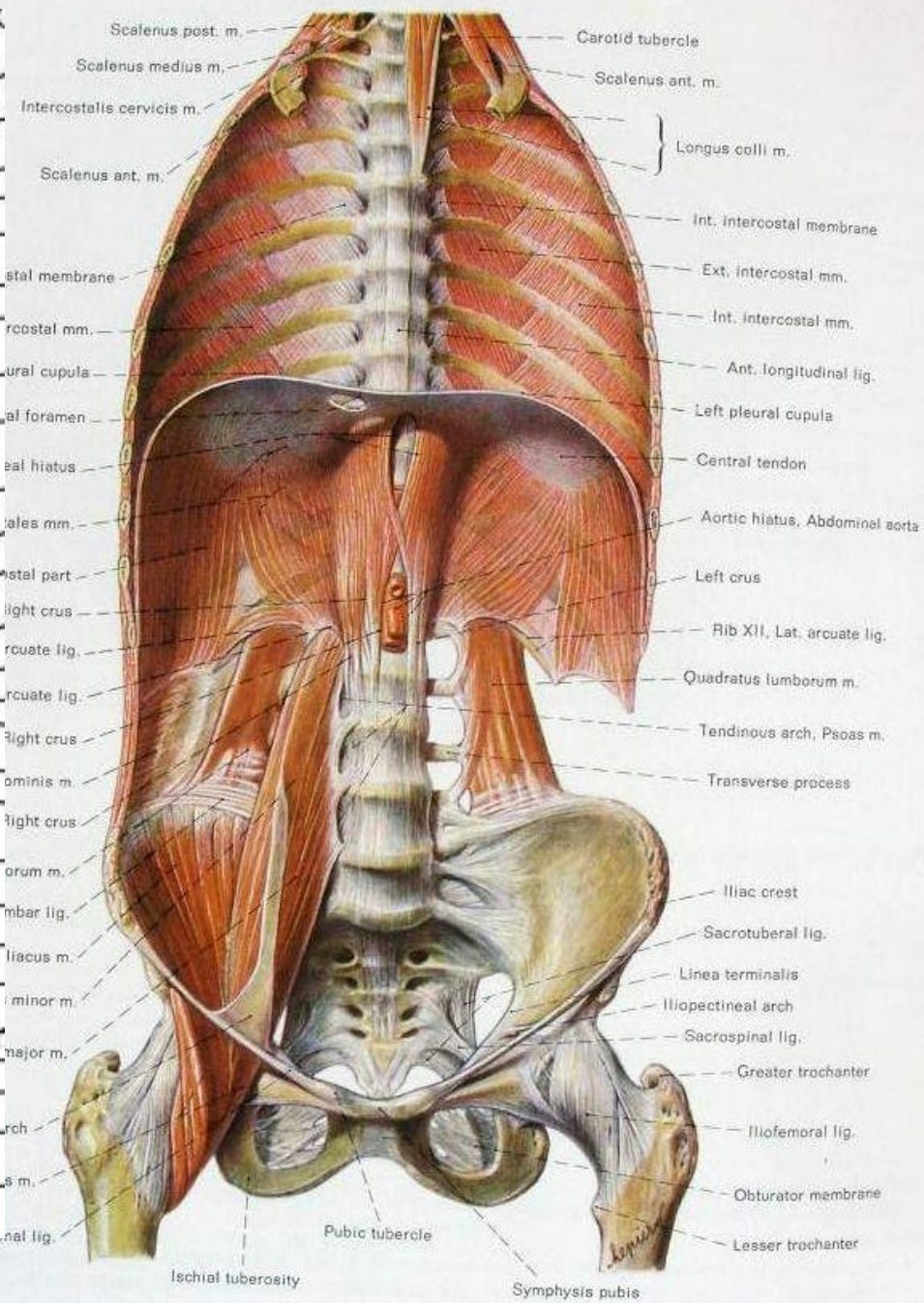
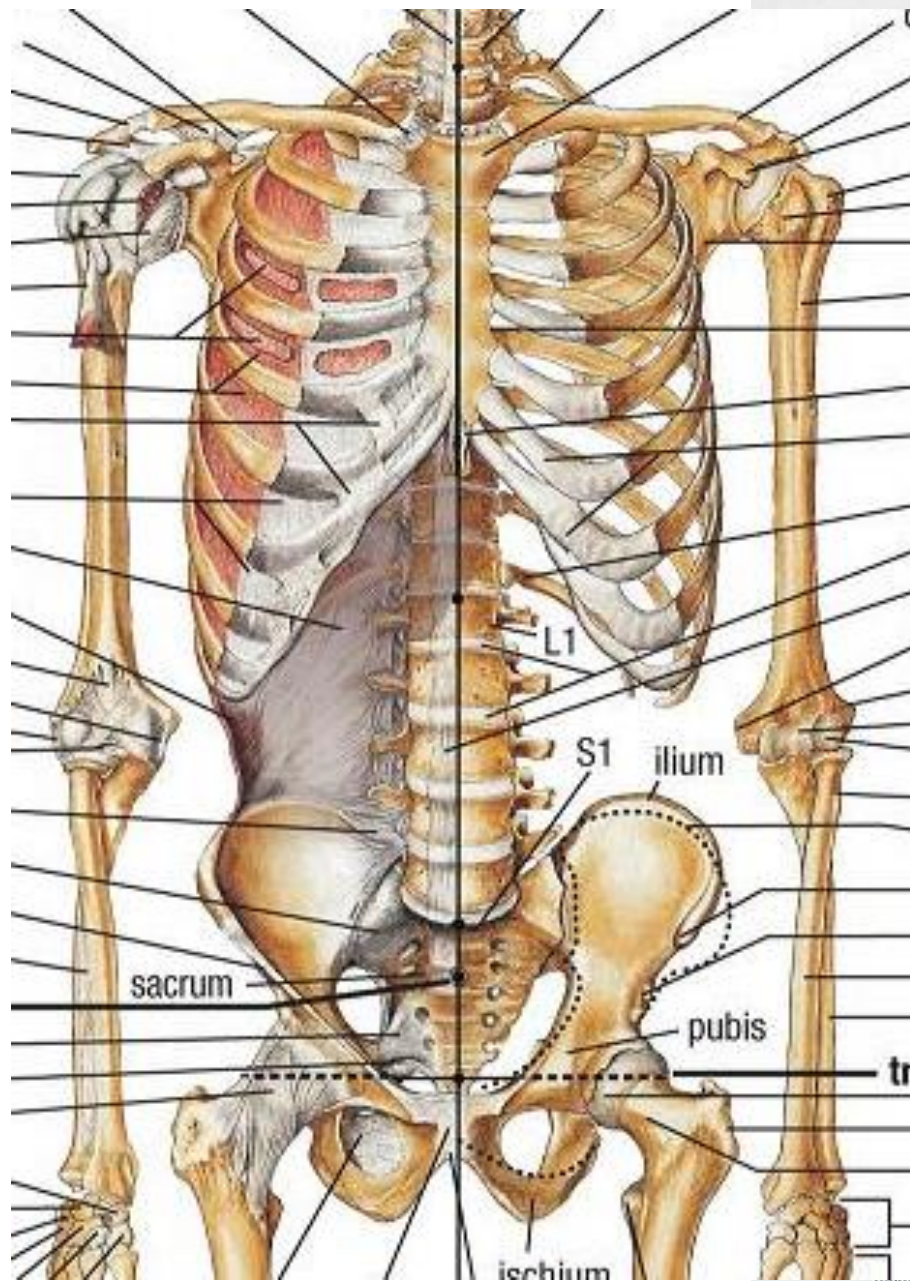


b

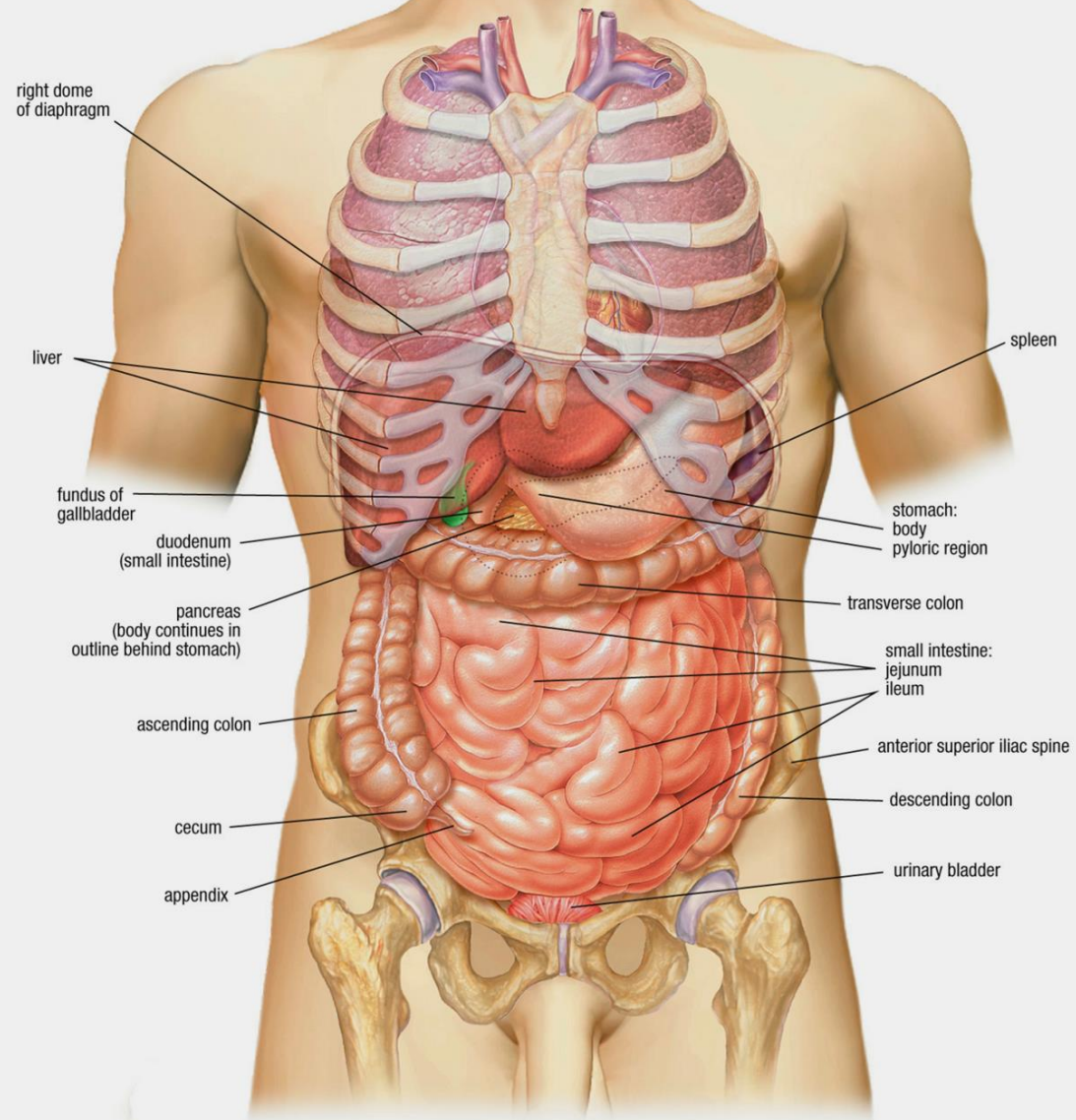


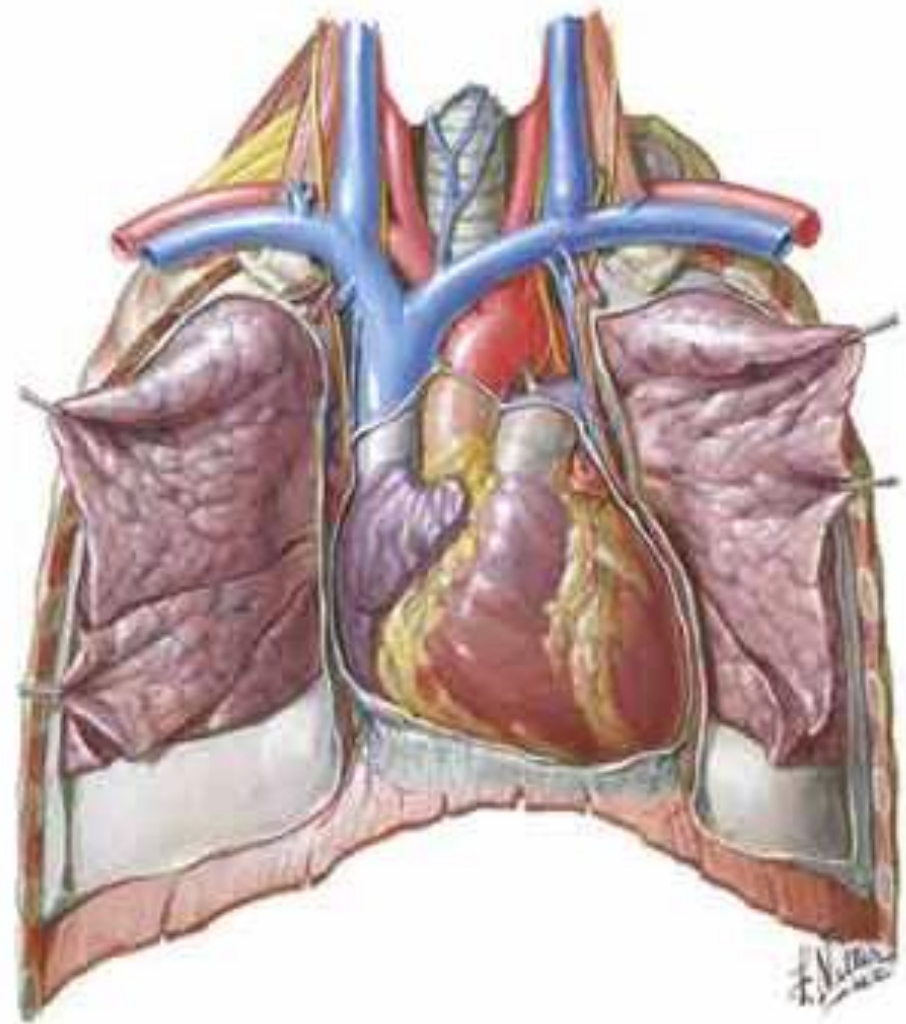
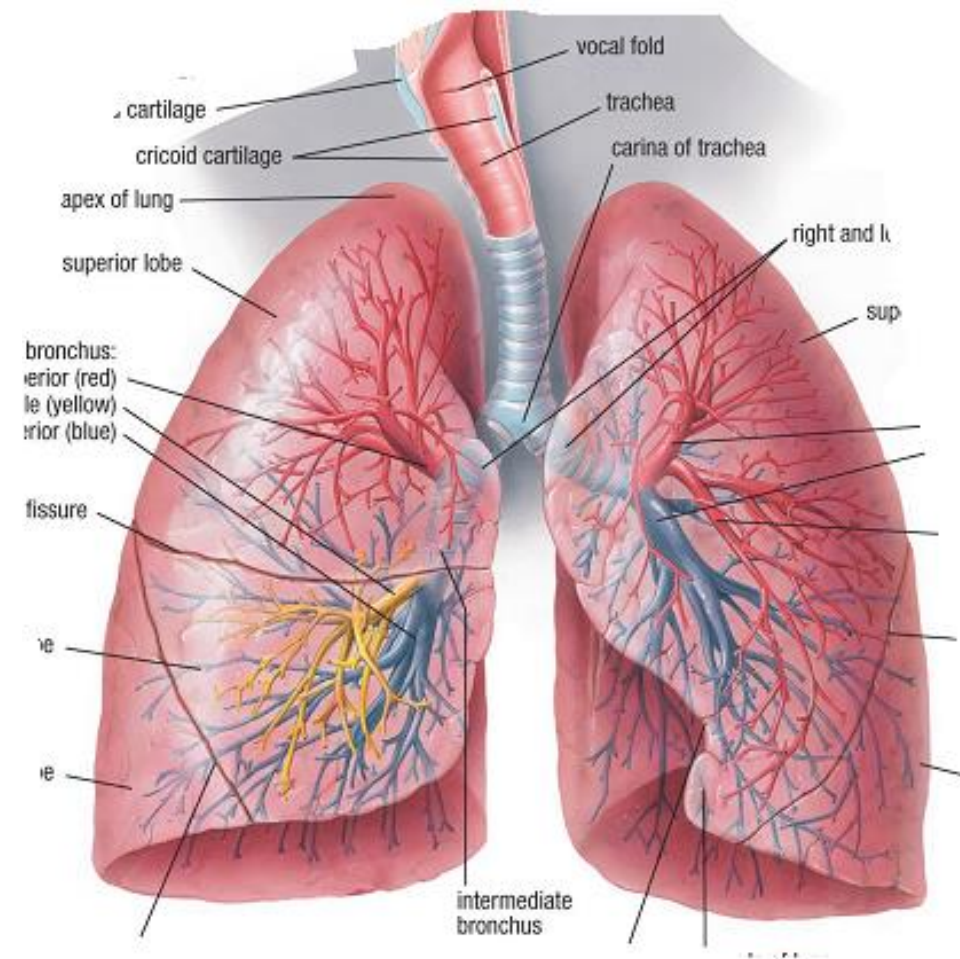


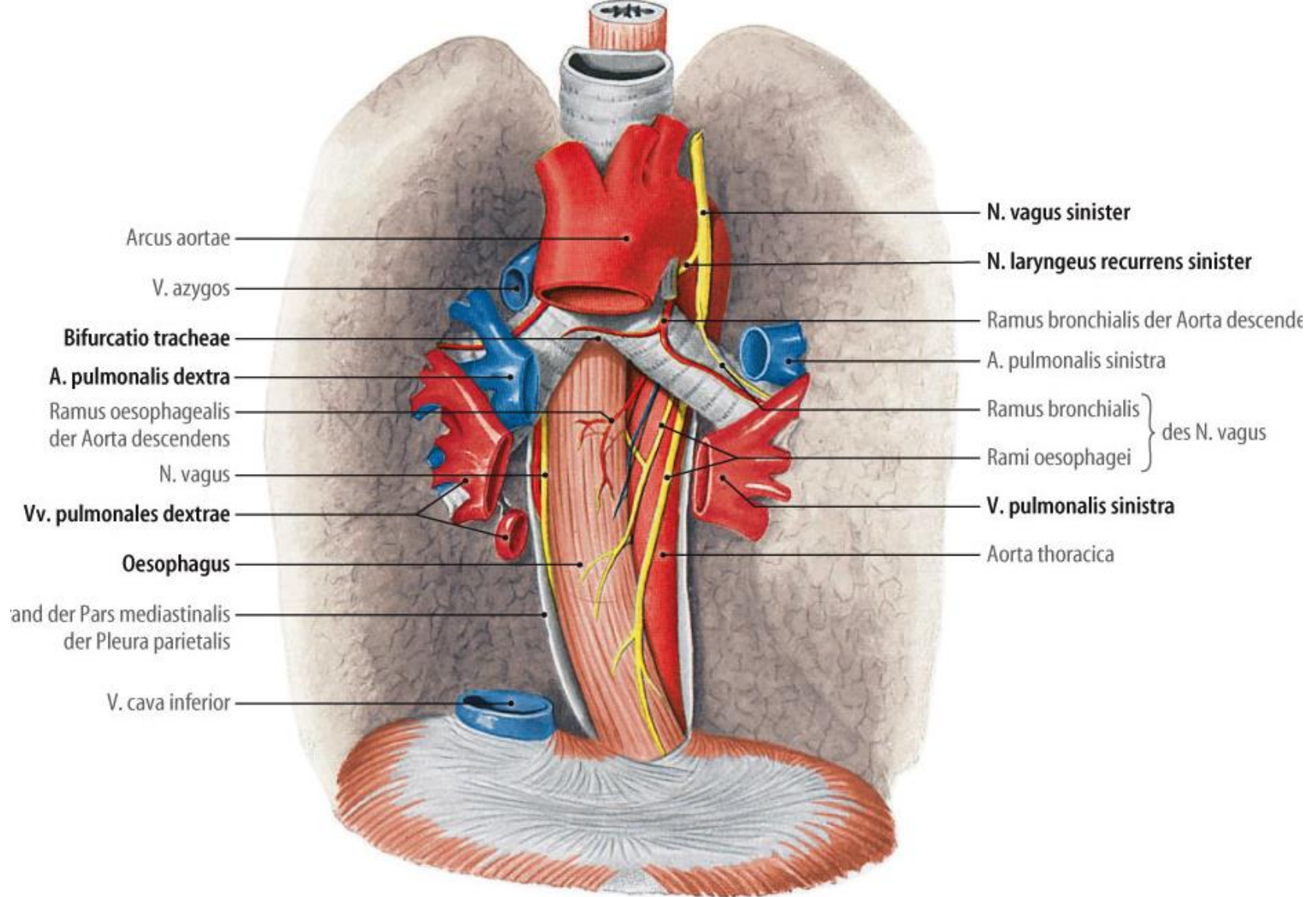


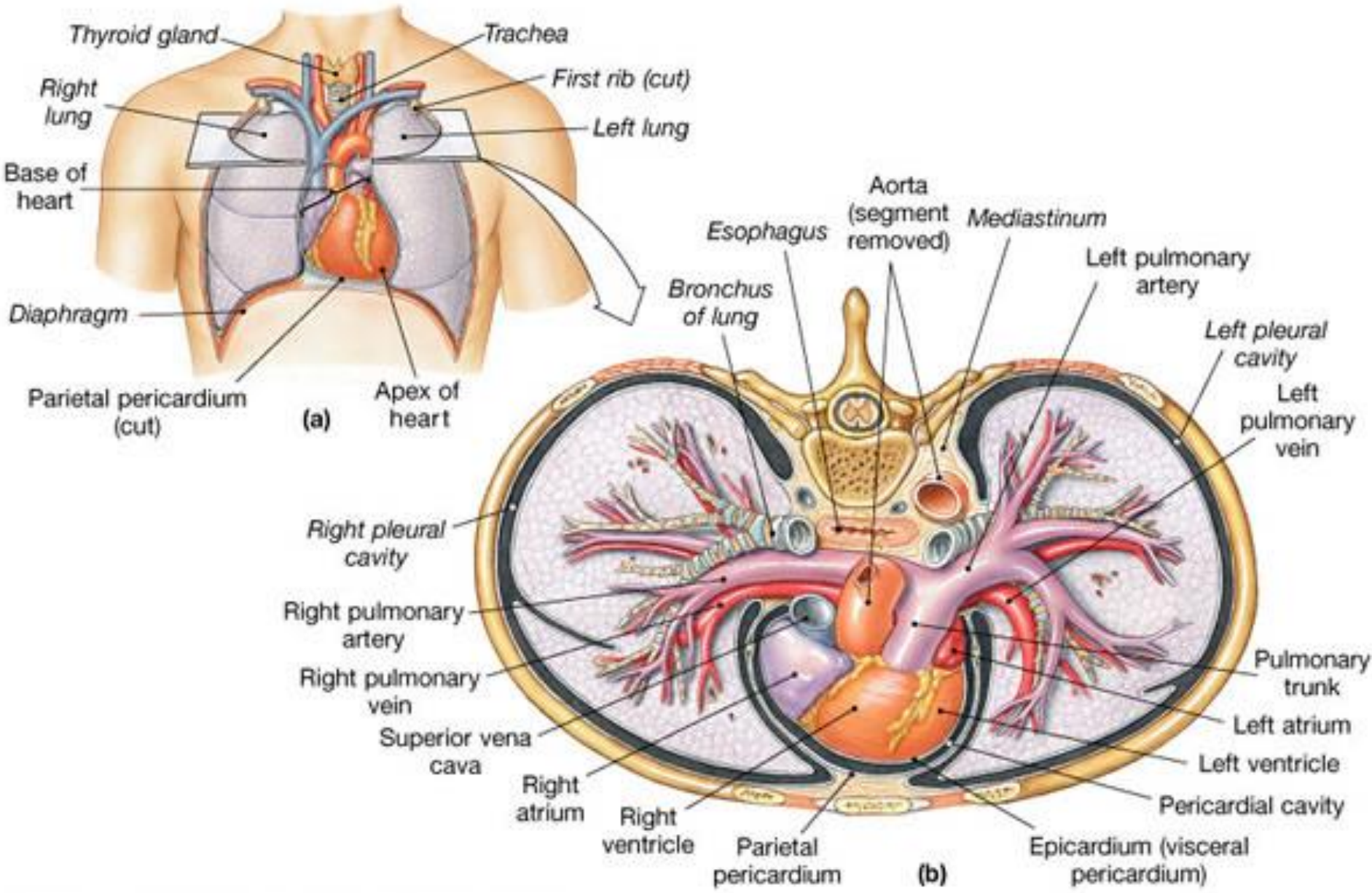


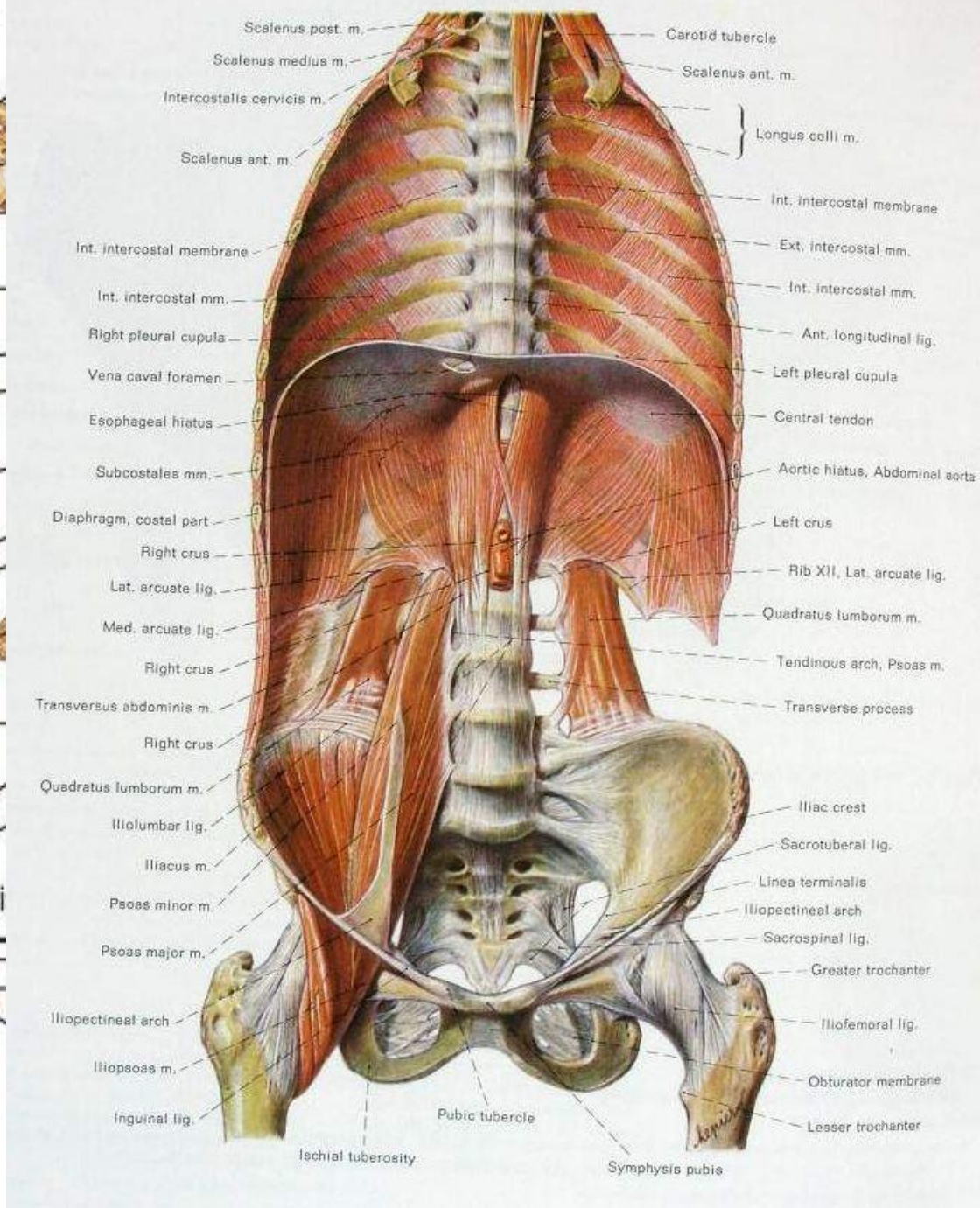
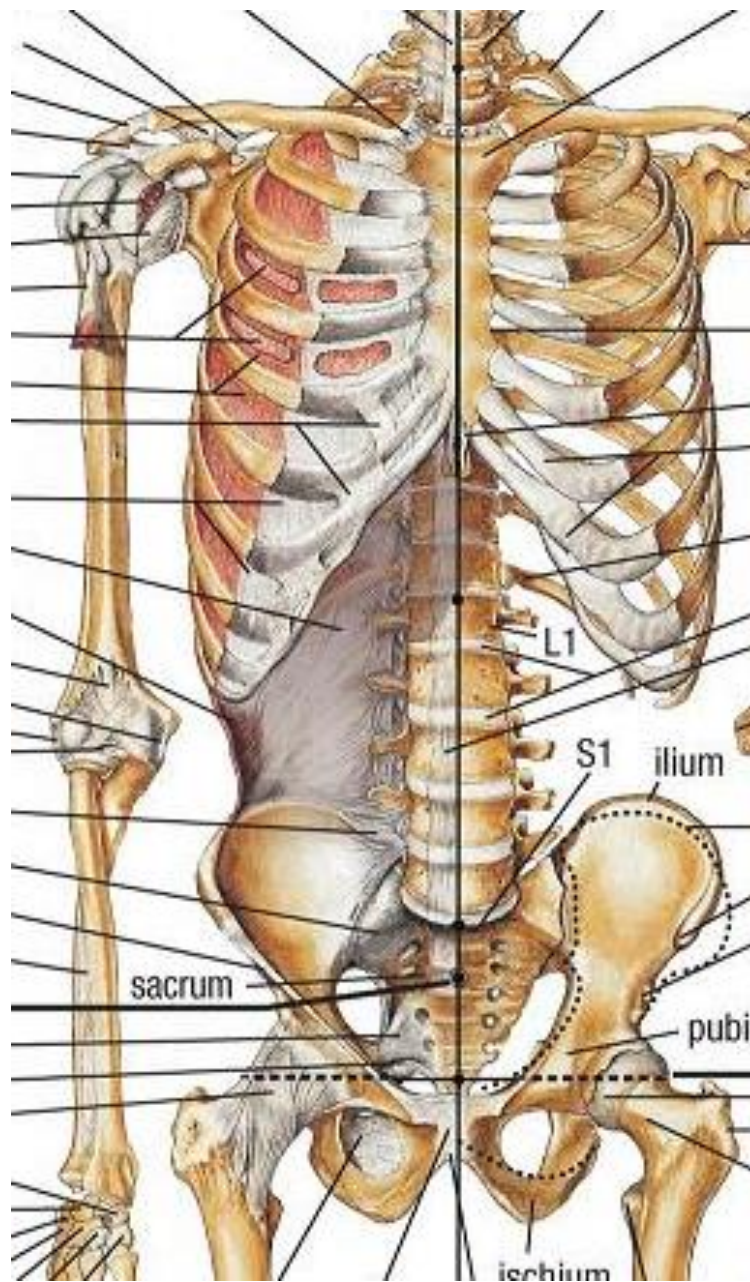
ABDOMINAL VISCERA (ANTERIOR VIEW)

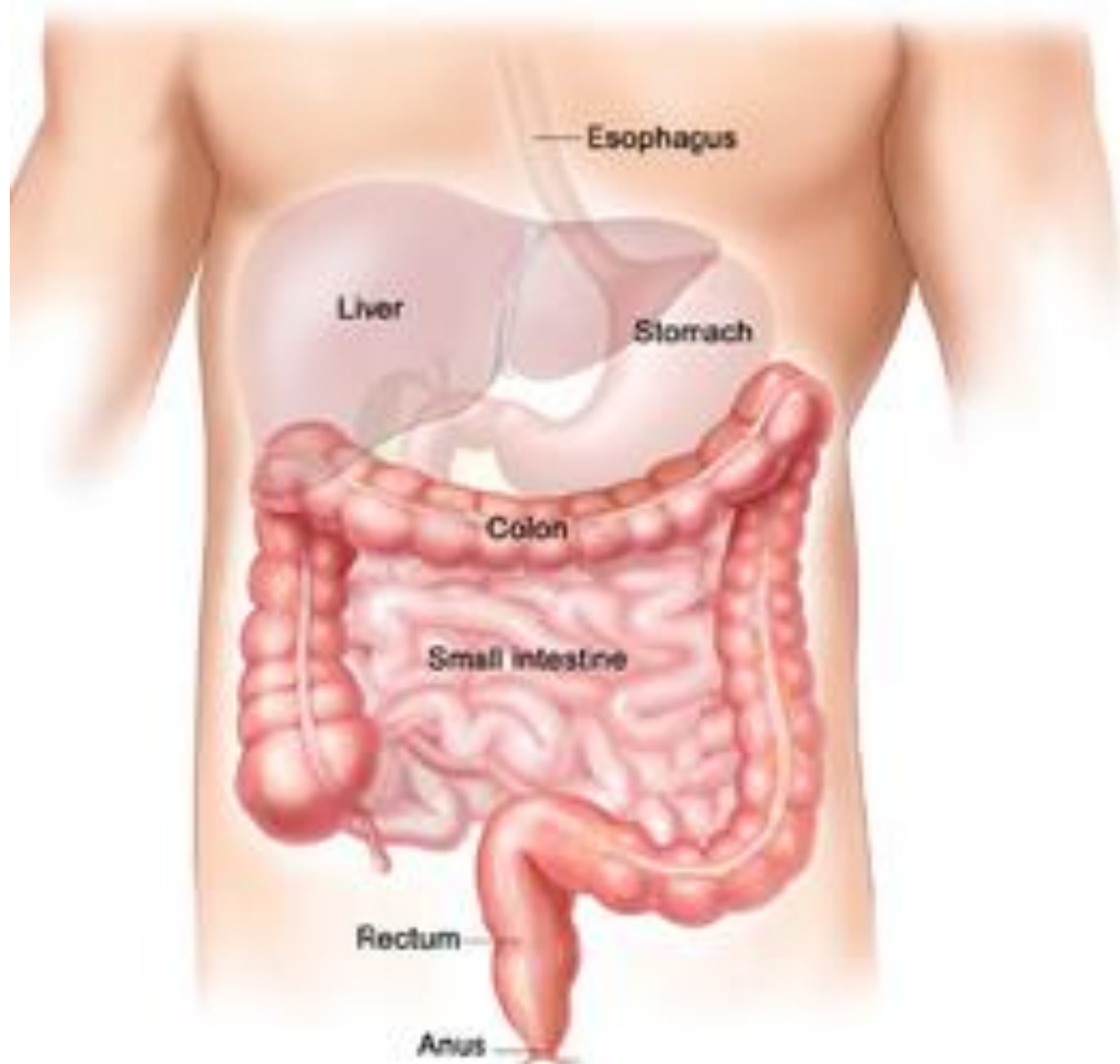


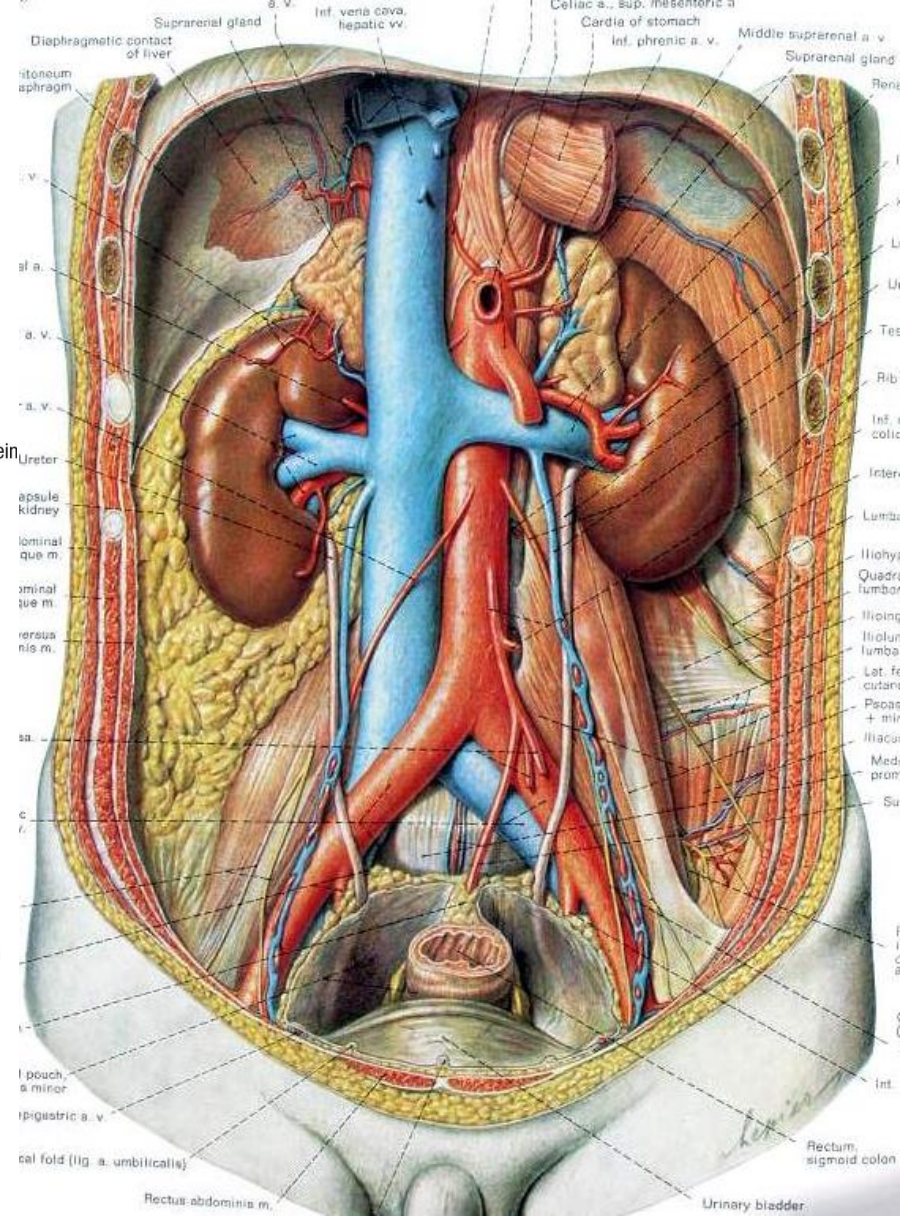


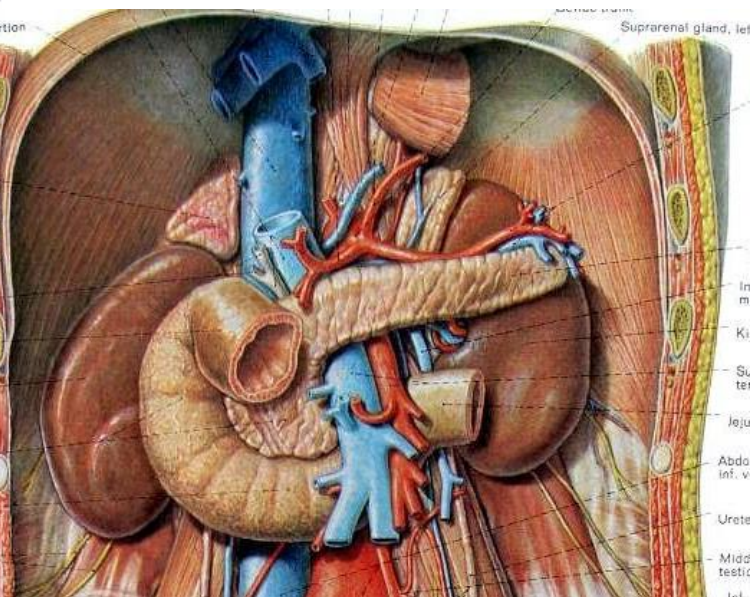
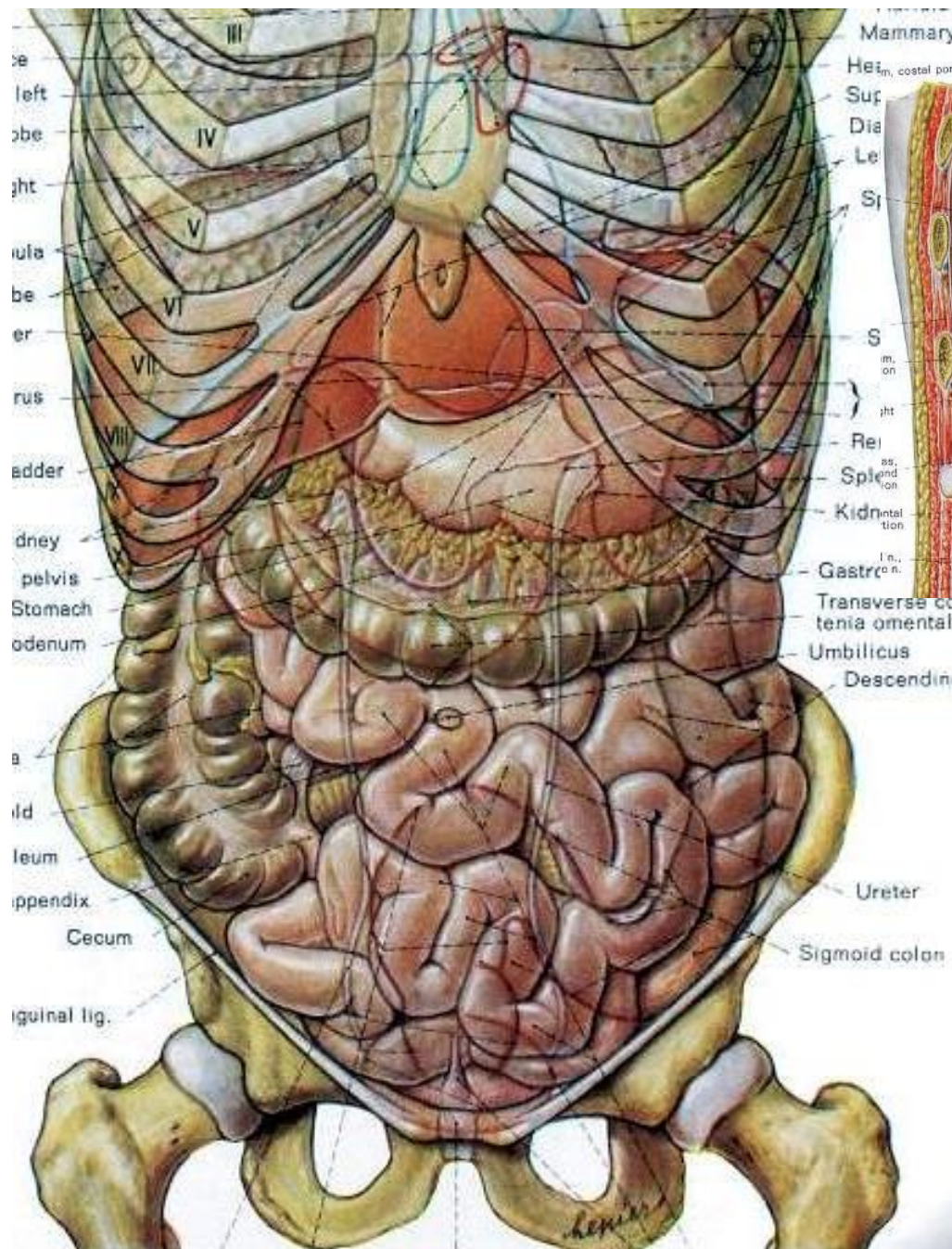


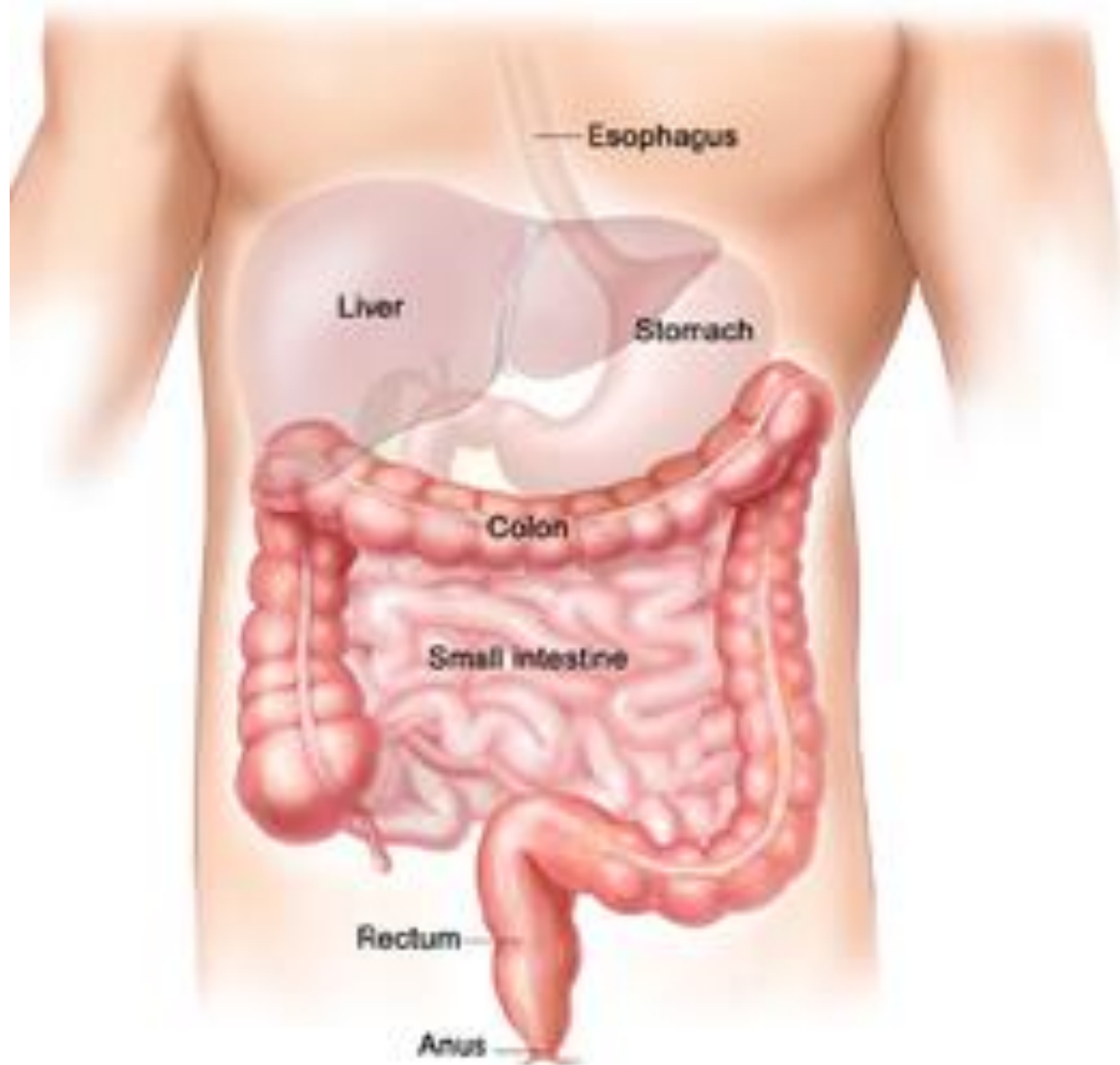












Alimentary Canal

