

Fig. 30. Schematic diagram of the human circulatory system. Vessels with arterial blood, blue; portal system, violet.

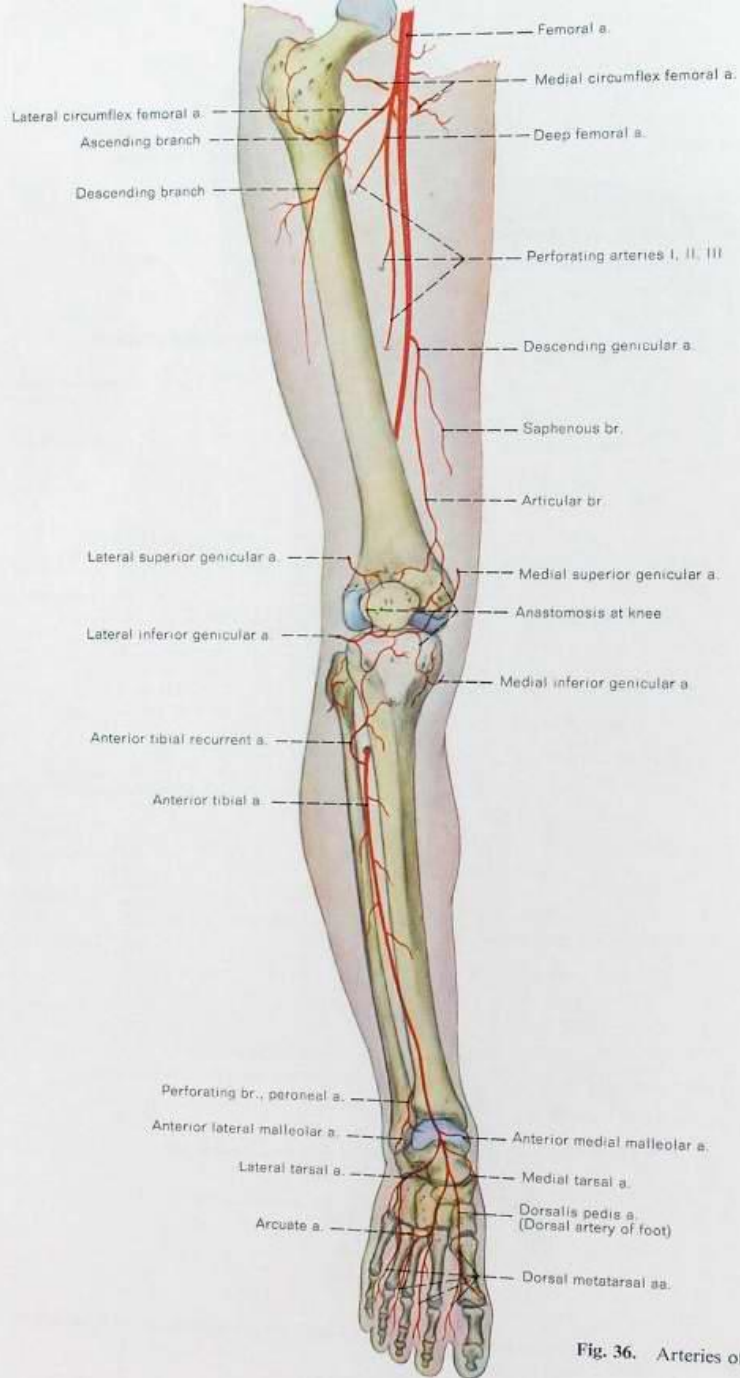


Fig. 36. Arteries of the right leg and foot, anterior view.

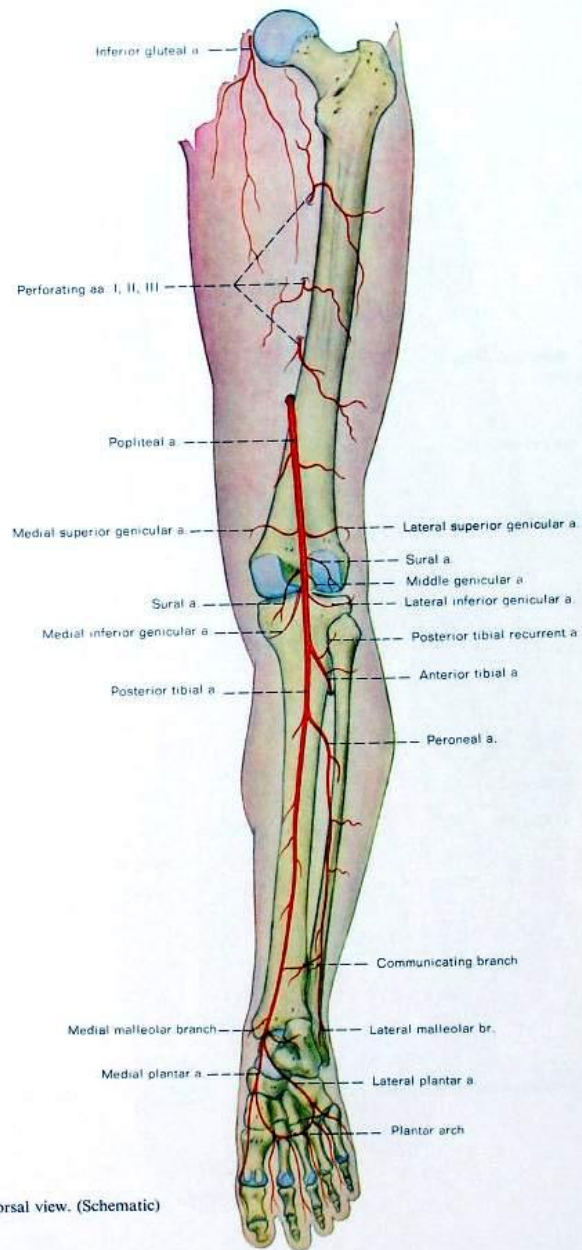
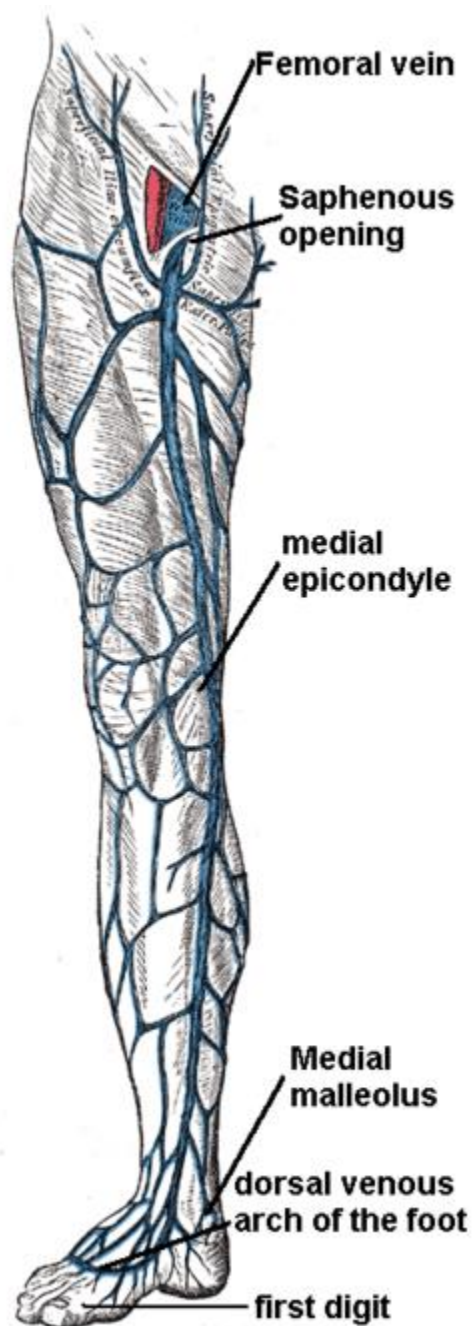
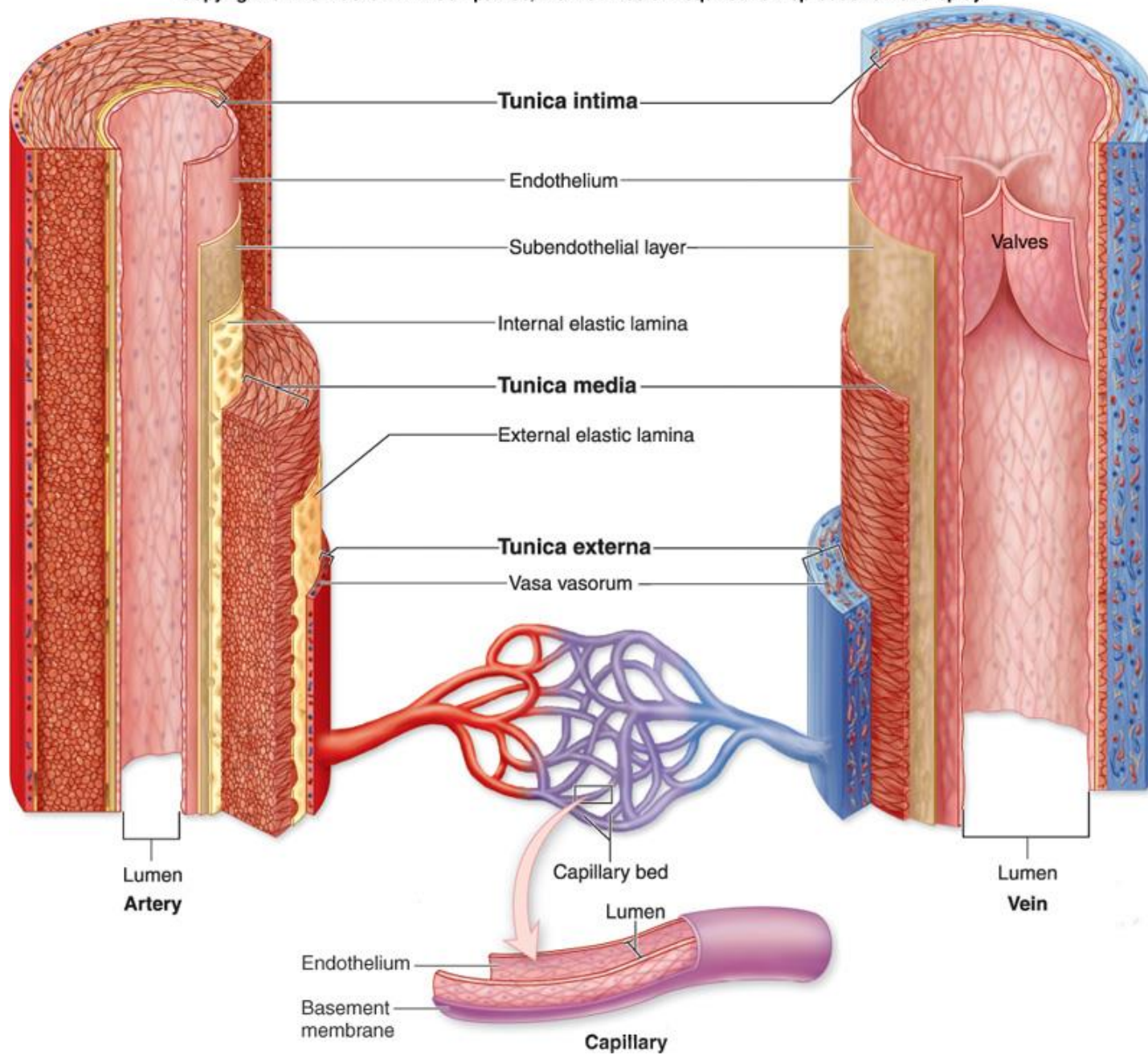
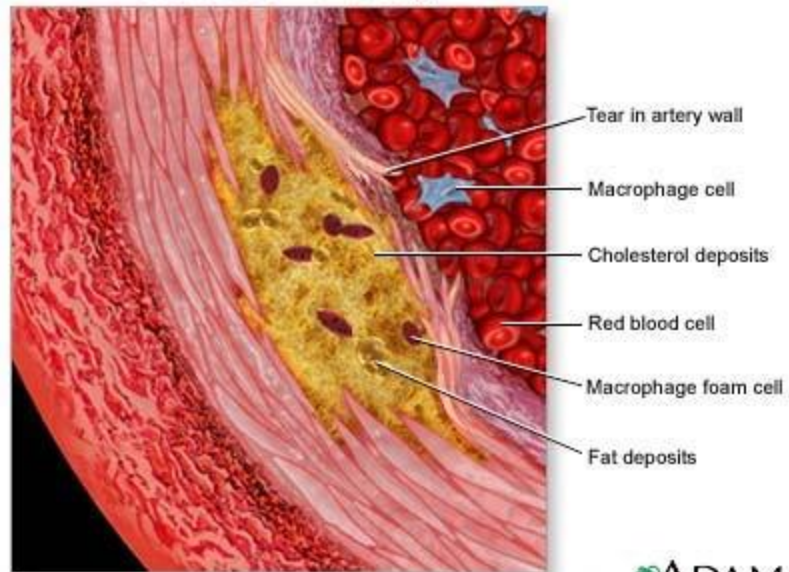


Fig. 37. Dorsal view. (Schematic)





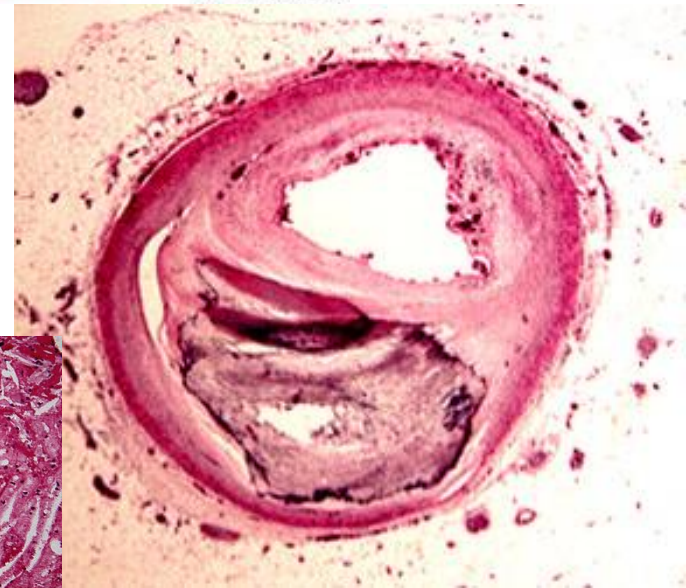
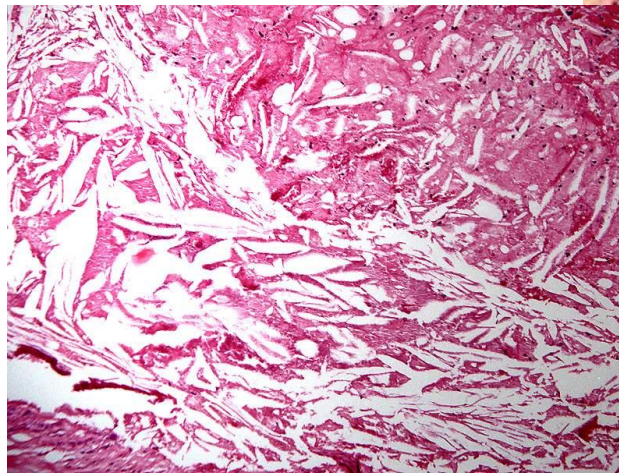
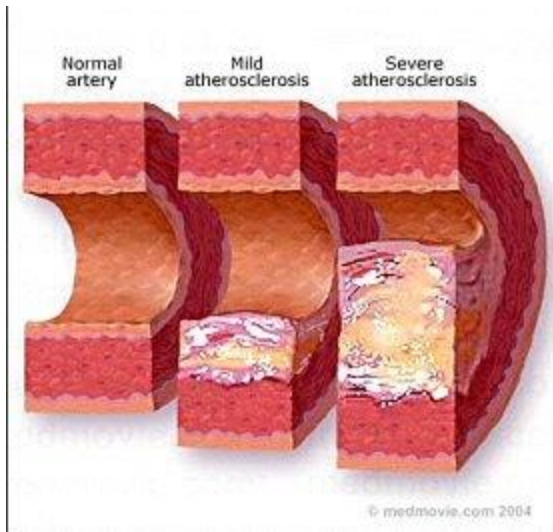
Cut-section of artery

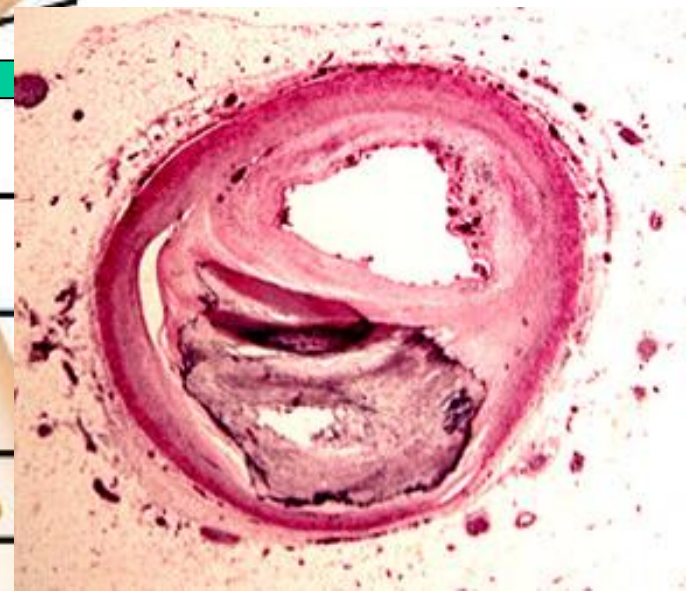
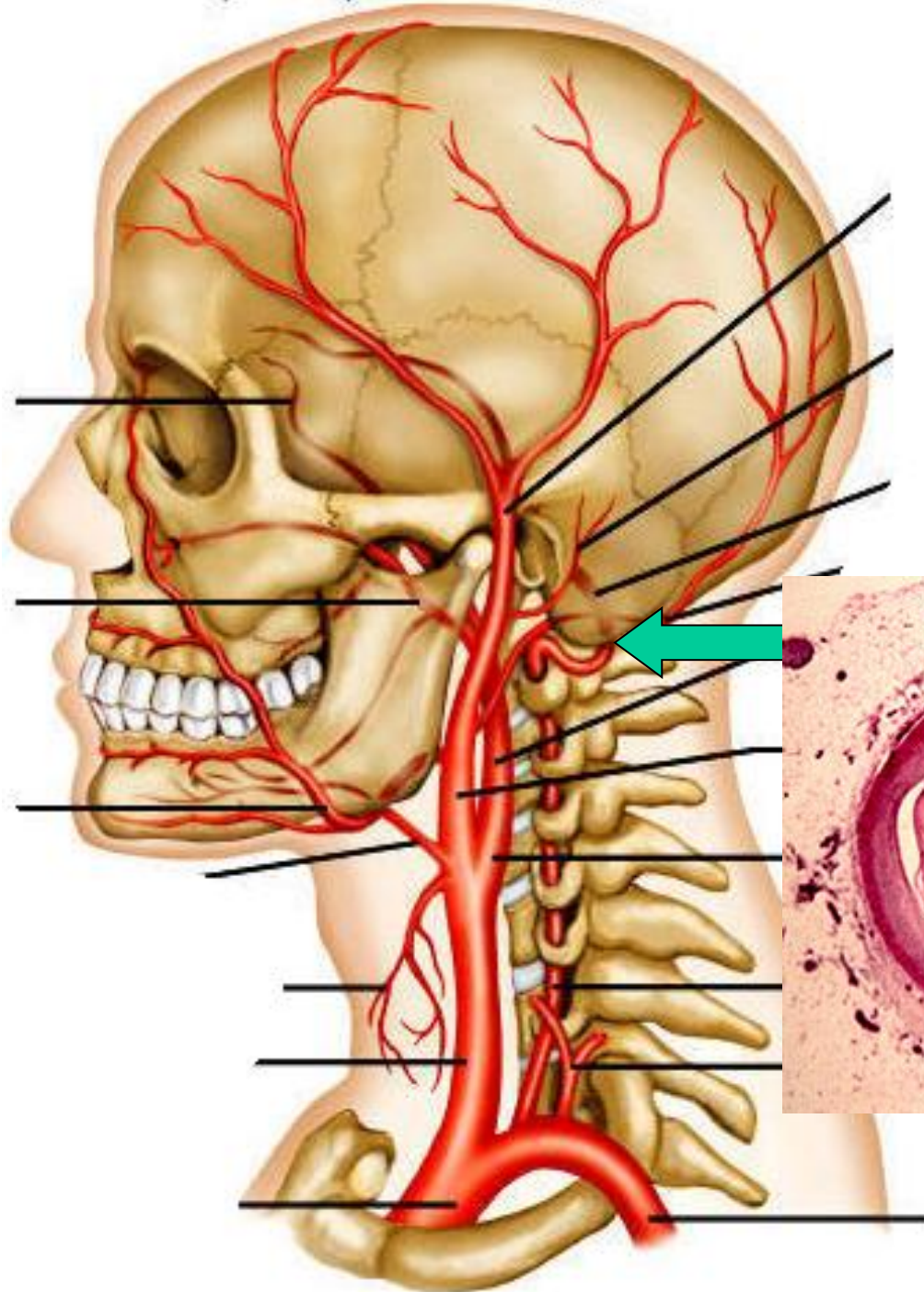


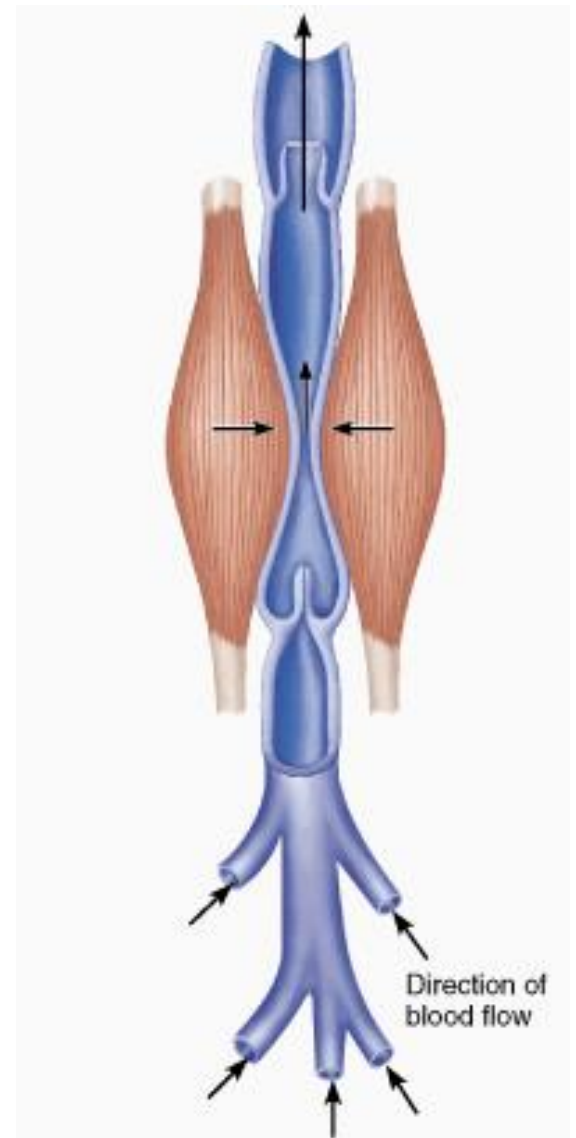
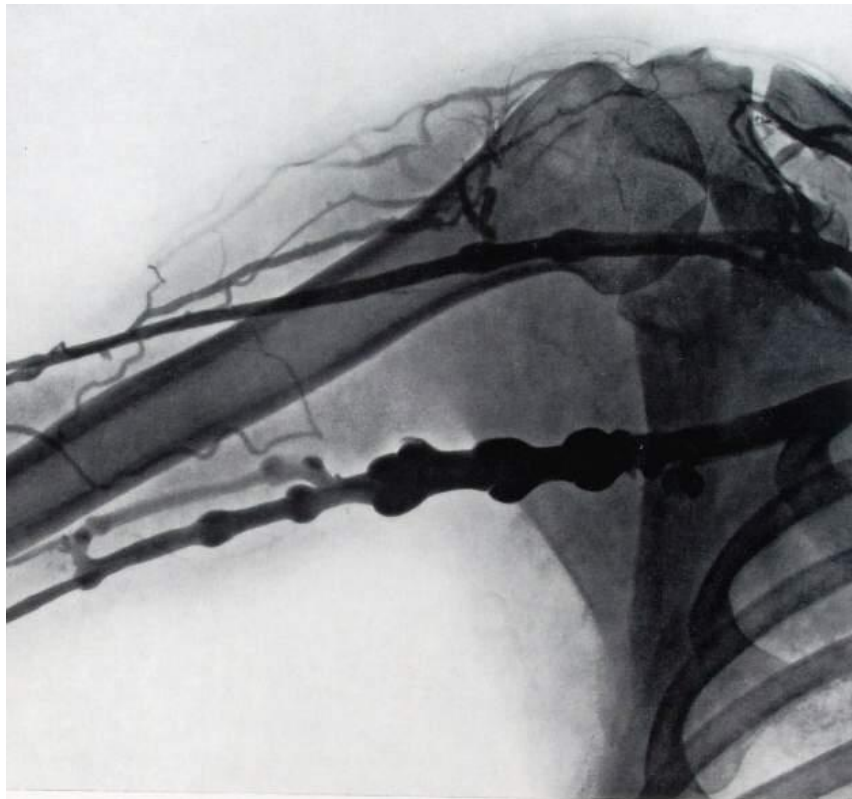
ADAM.

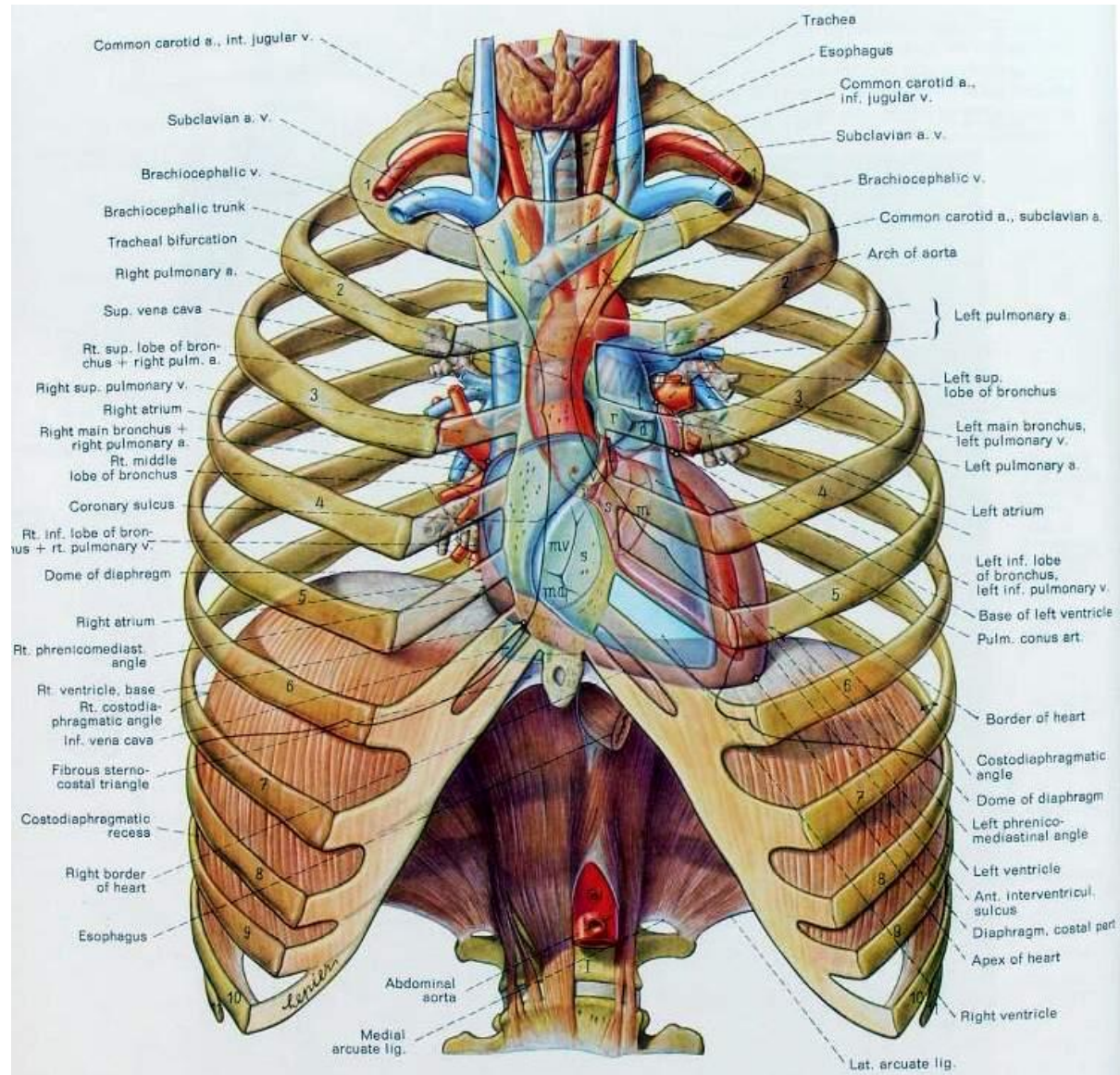


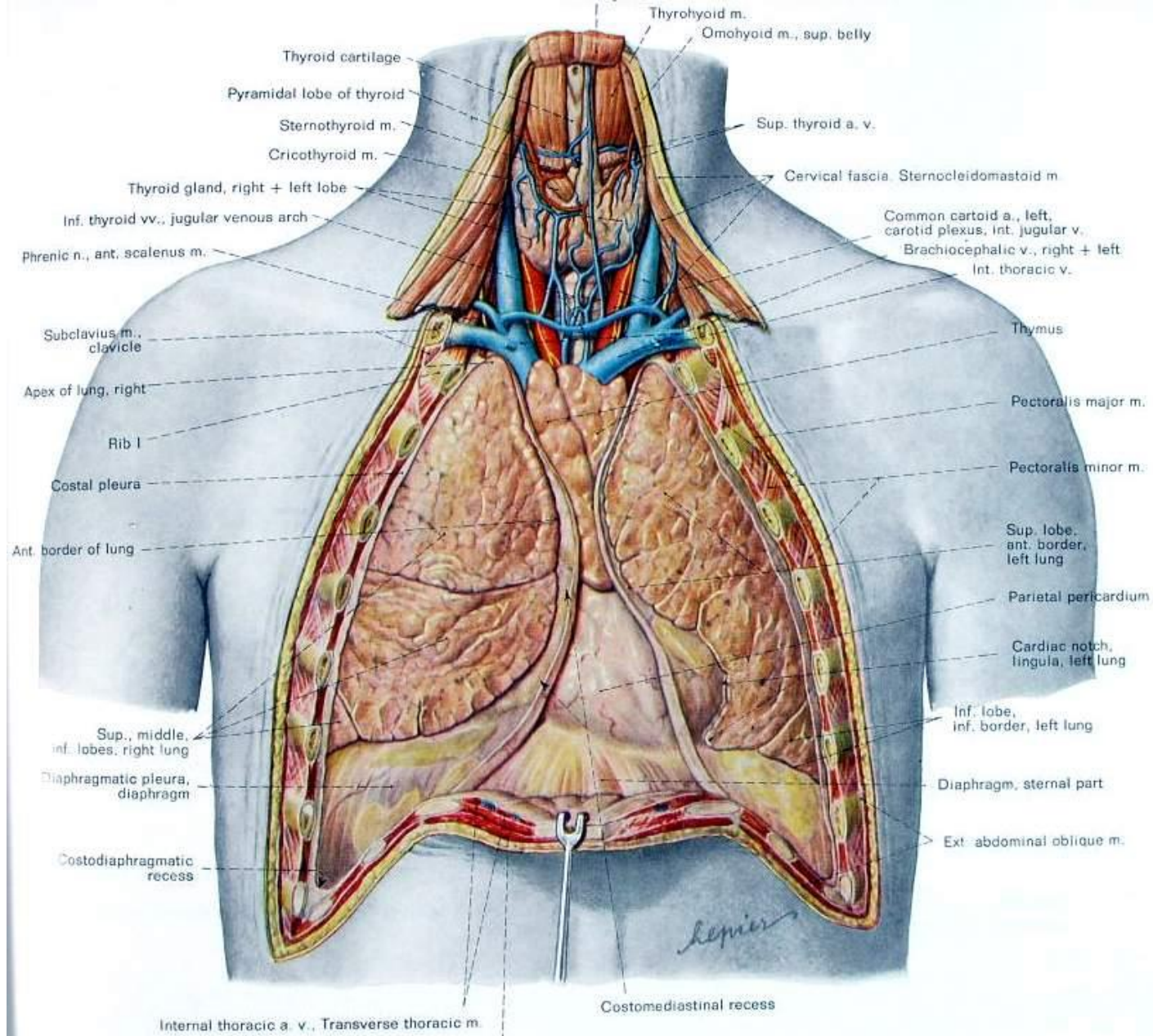
www.theholisticcare.com

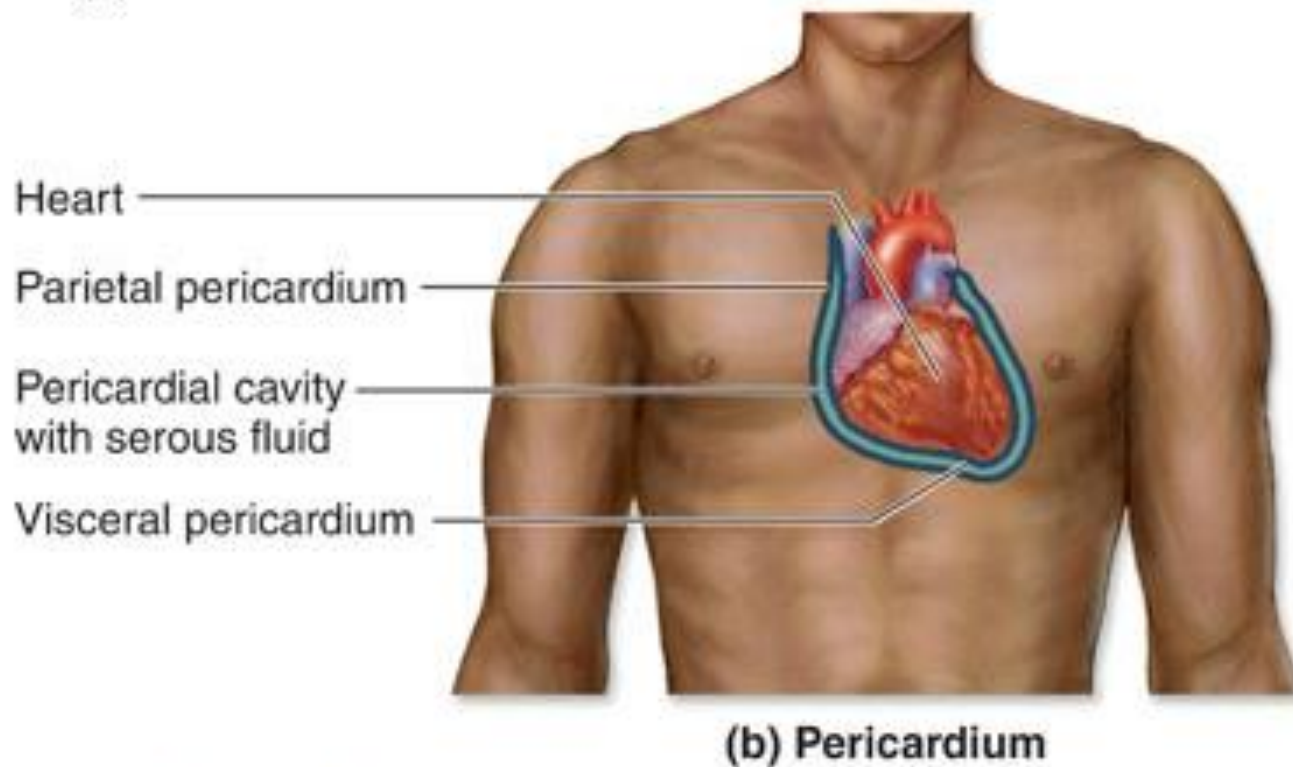
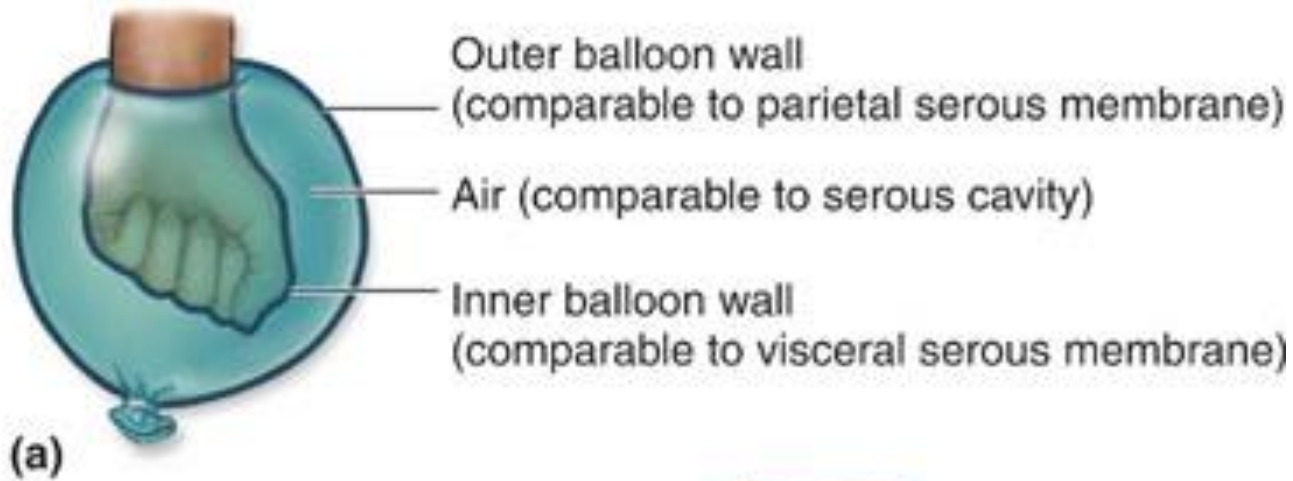


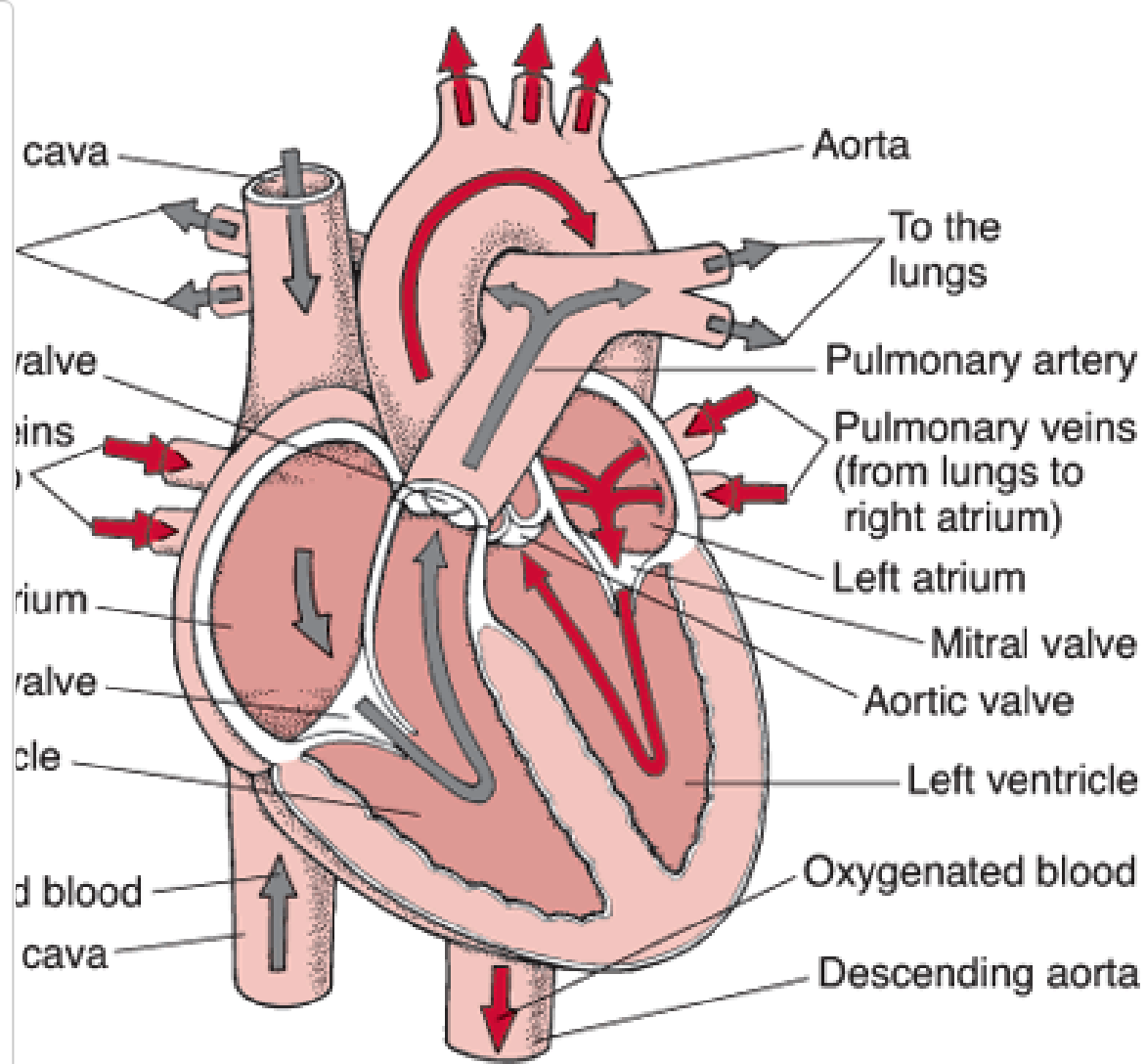
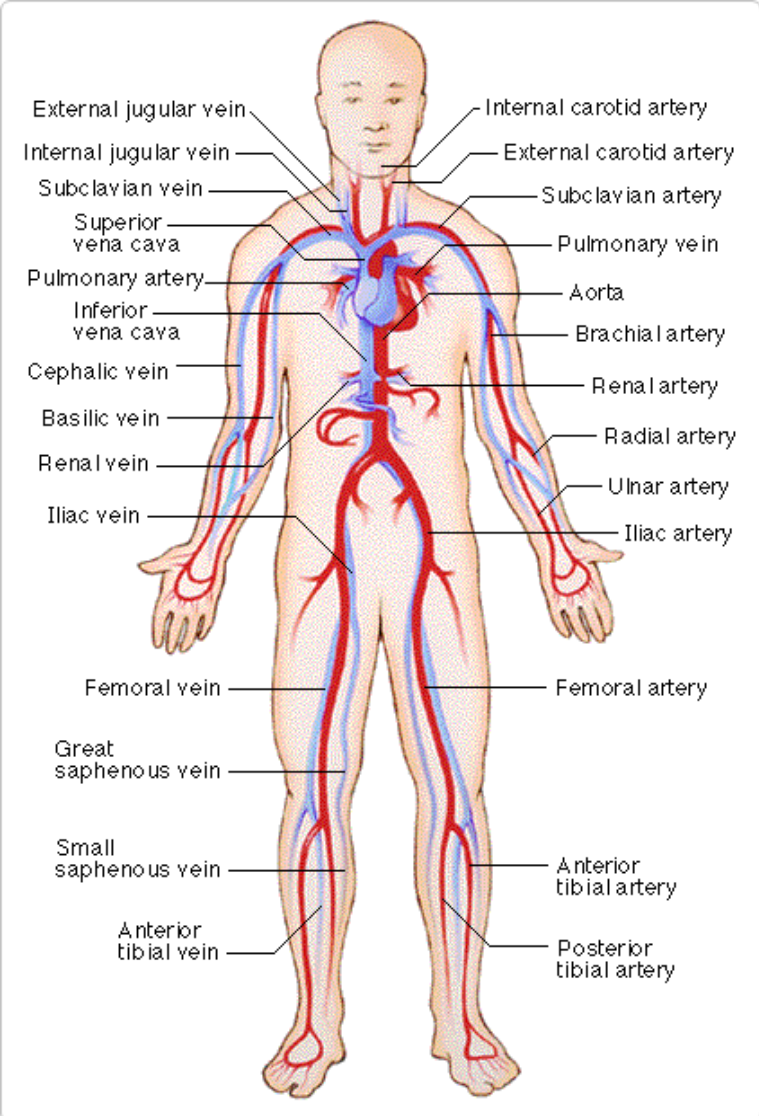


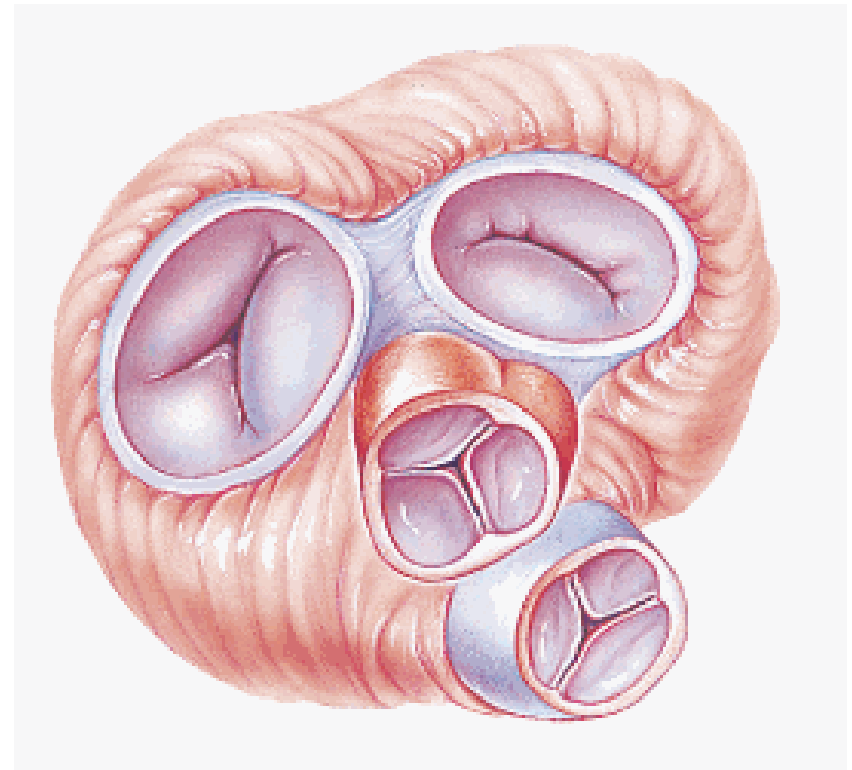
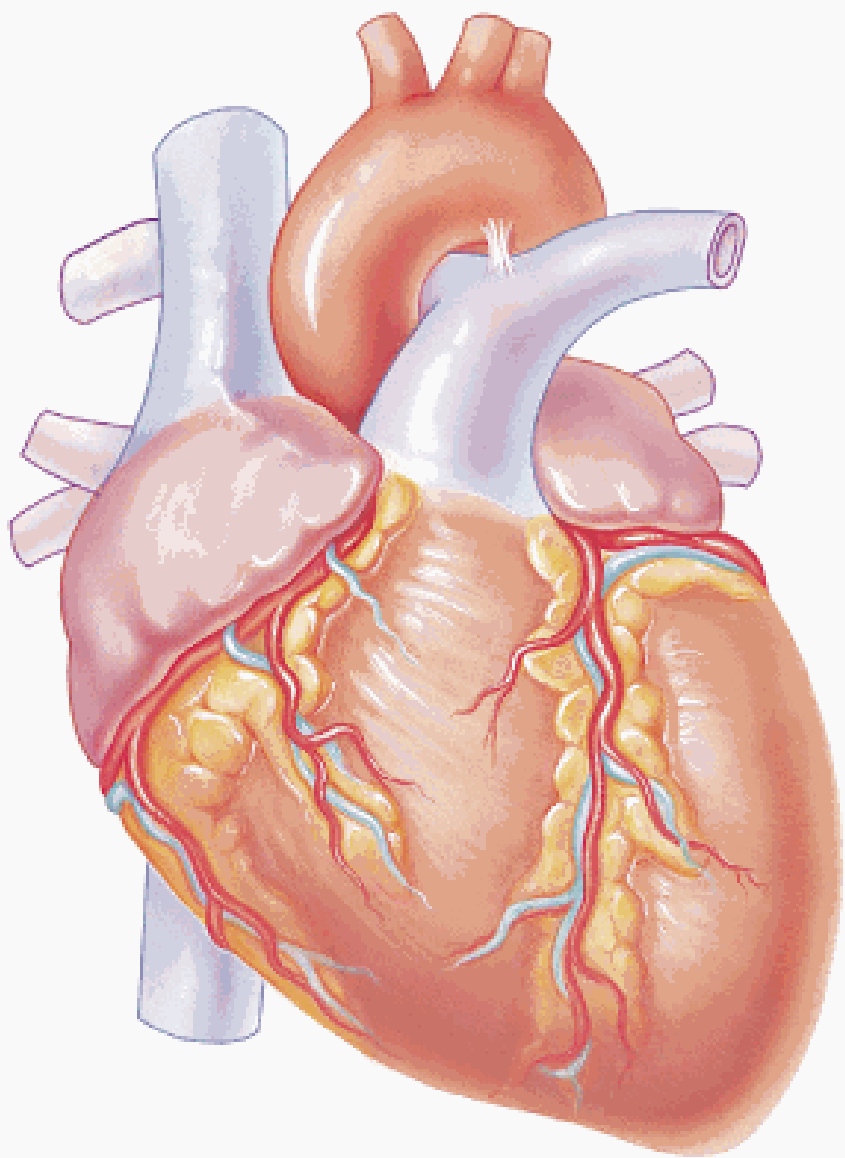


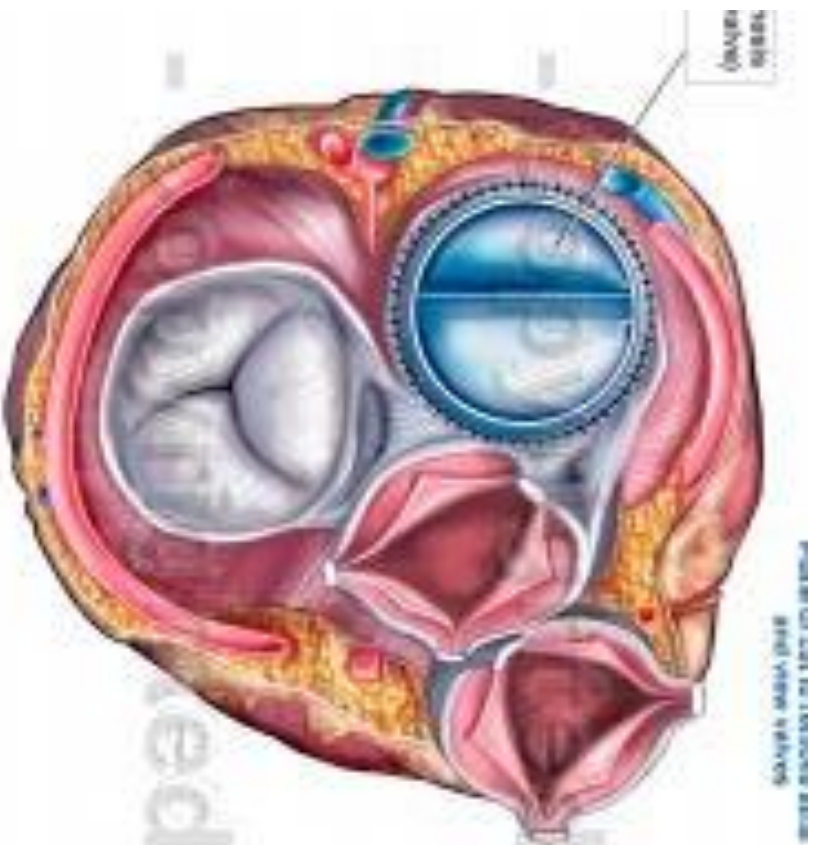




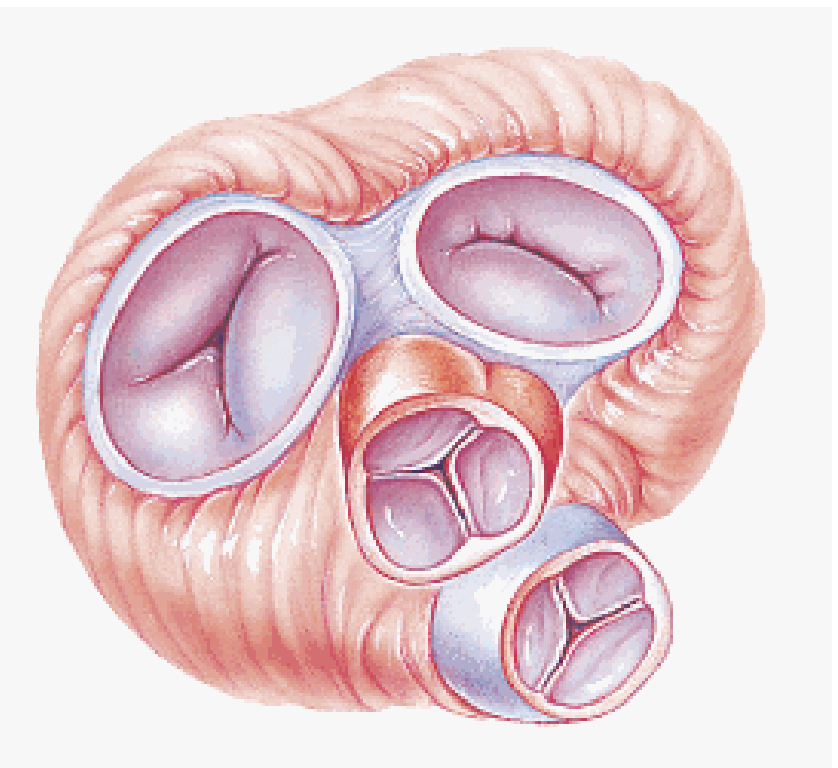








Superior view of valves (atria removed)

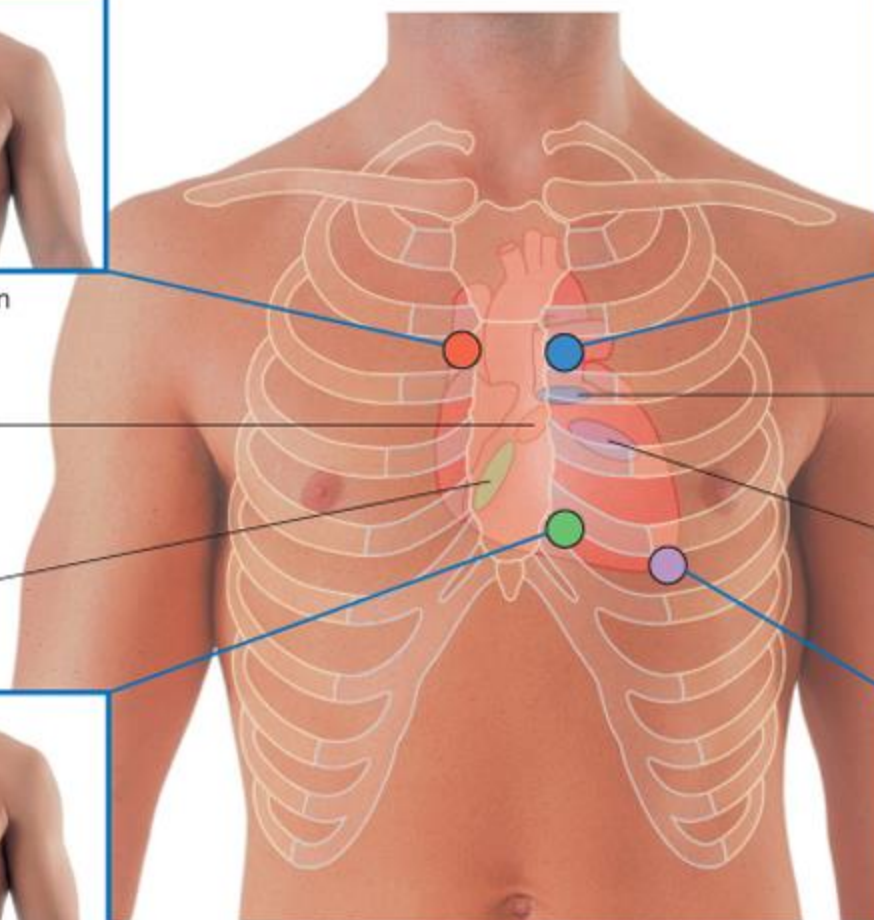




Auscultation position
for aortic valve



Auscultation position
for pulmonary valve



Aortic valve

Pulmonary valve

Tricuspid valve

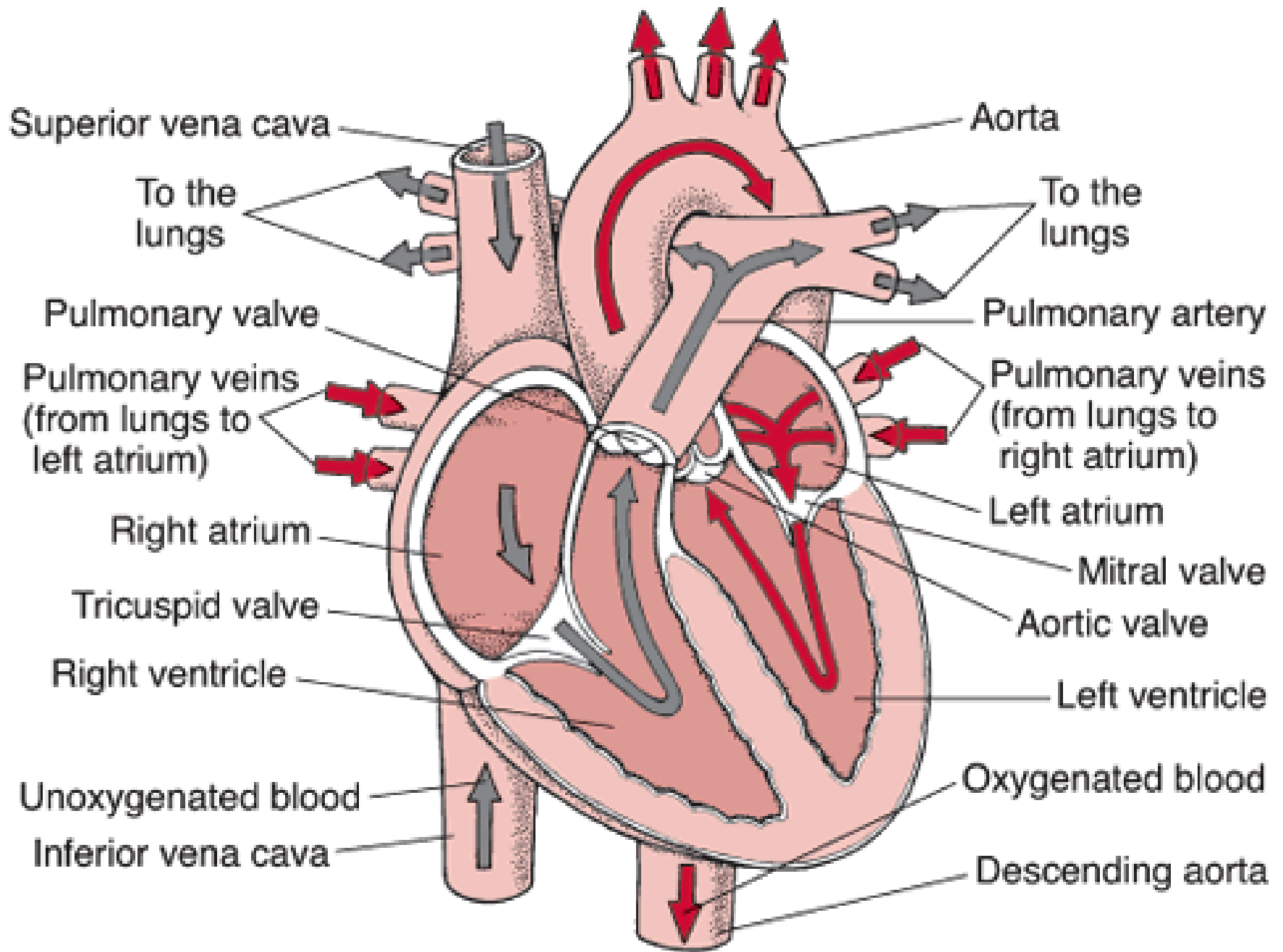
Mitral valve

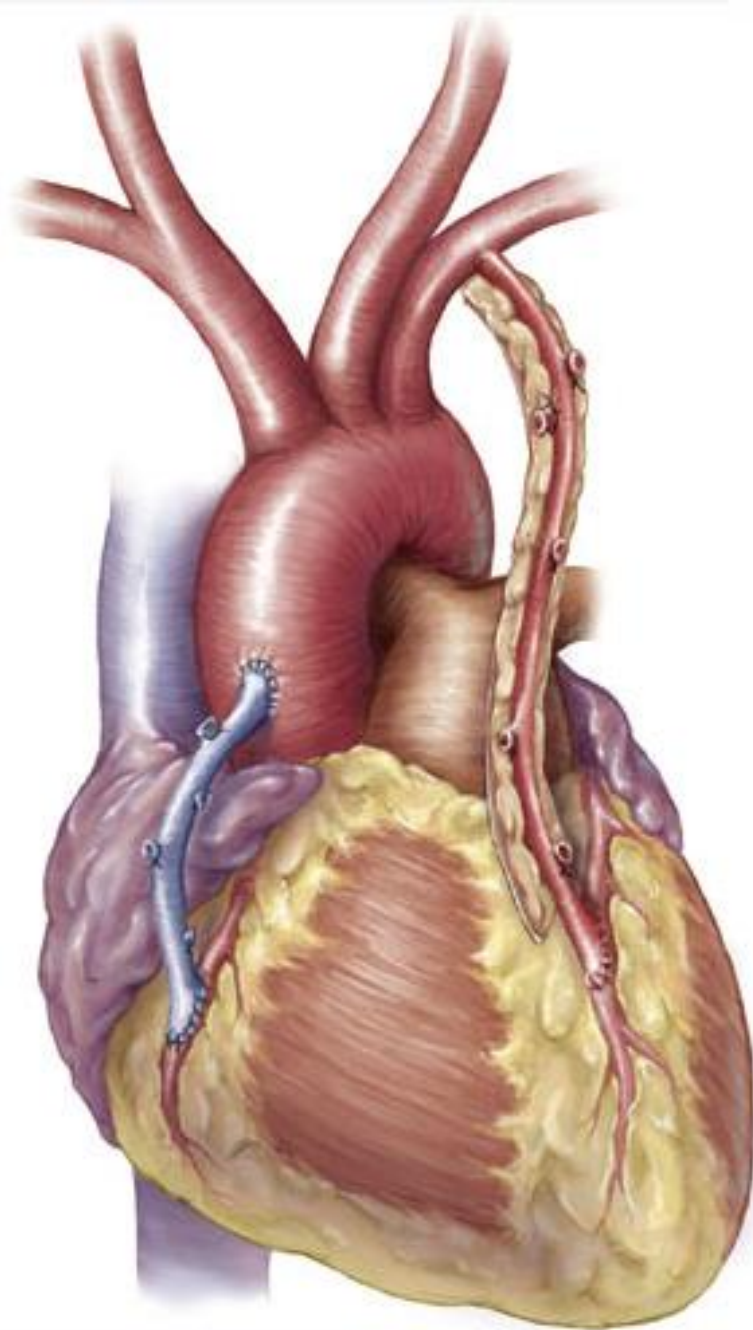
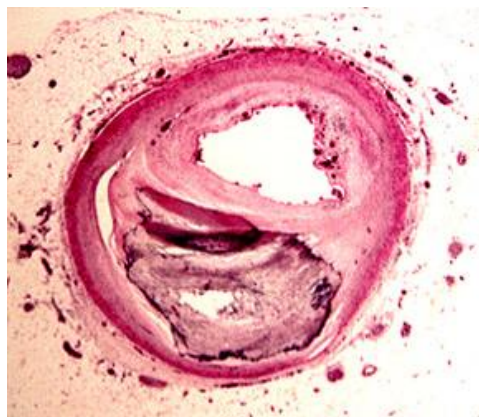
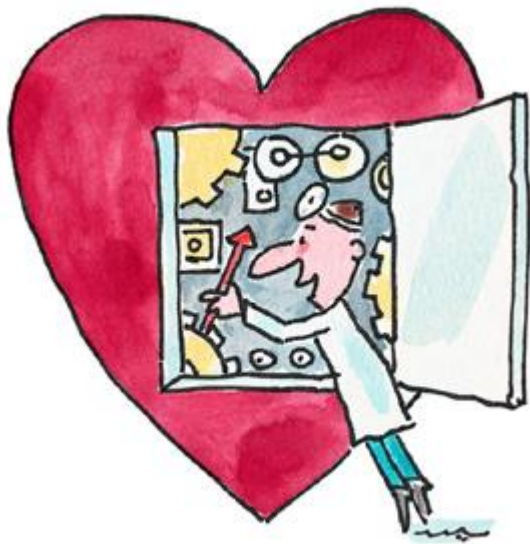


Auscultation position
for tricuspid valve

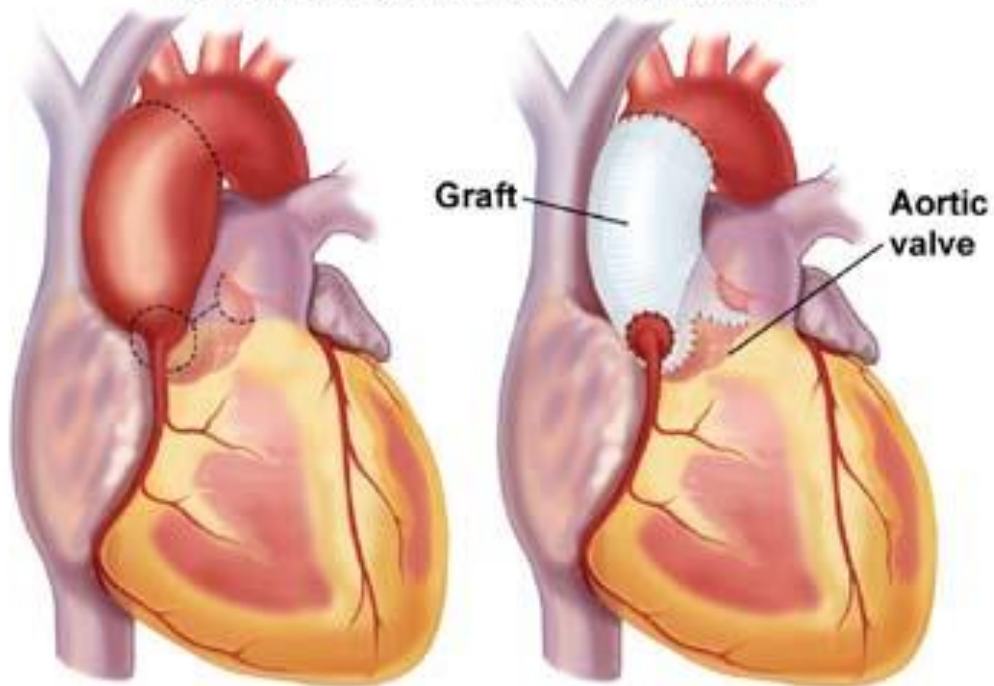


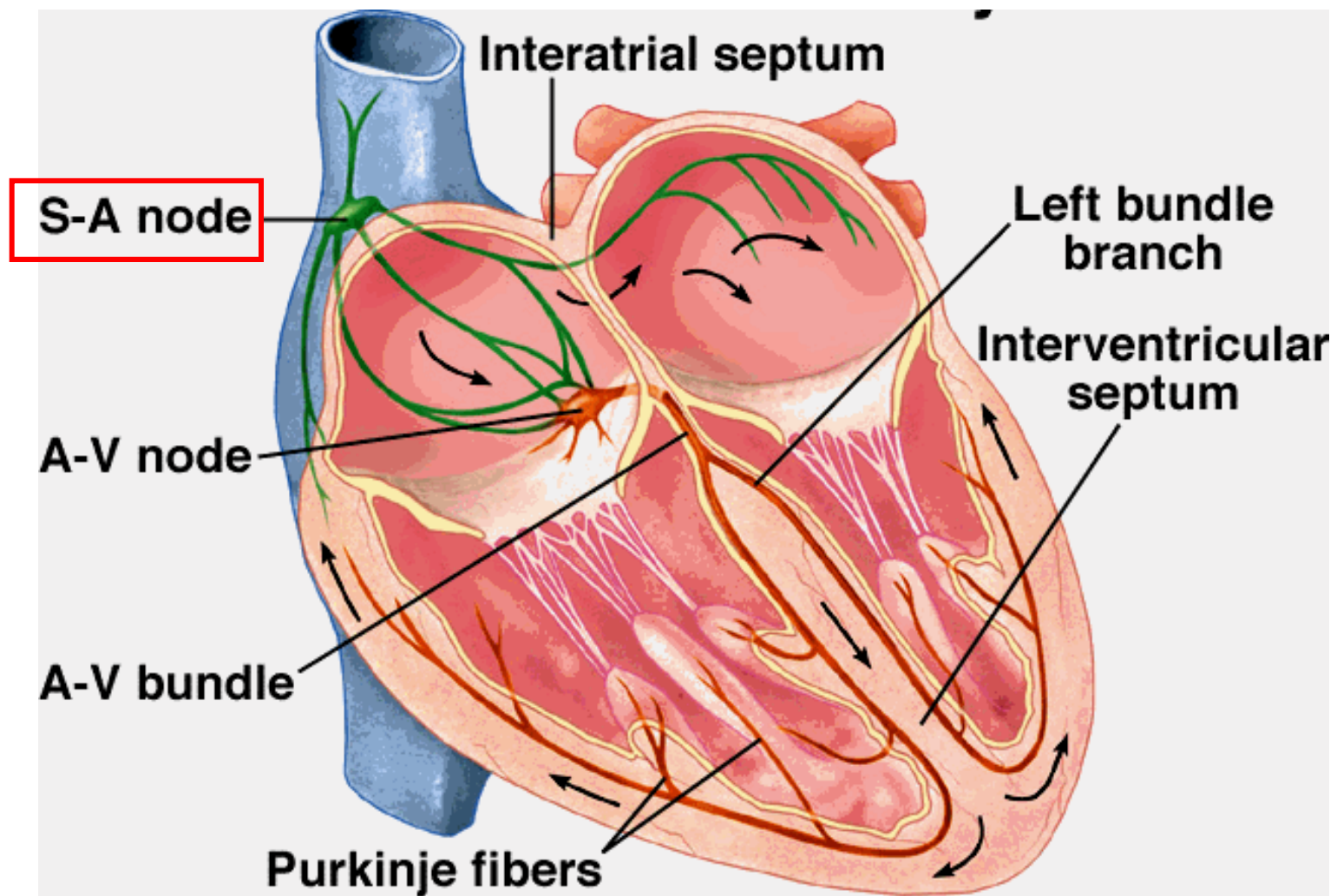
Auscultation position
for mitral valve



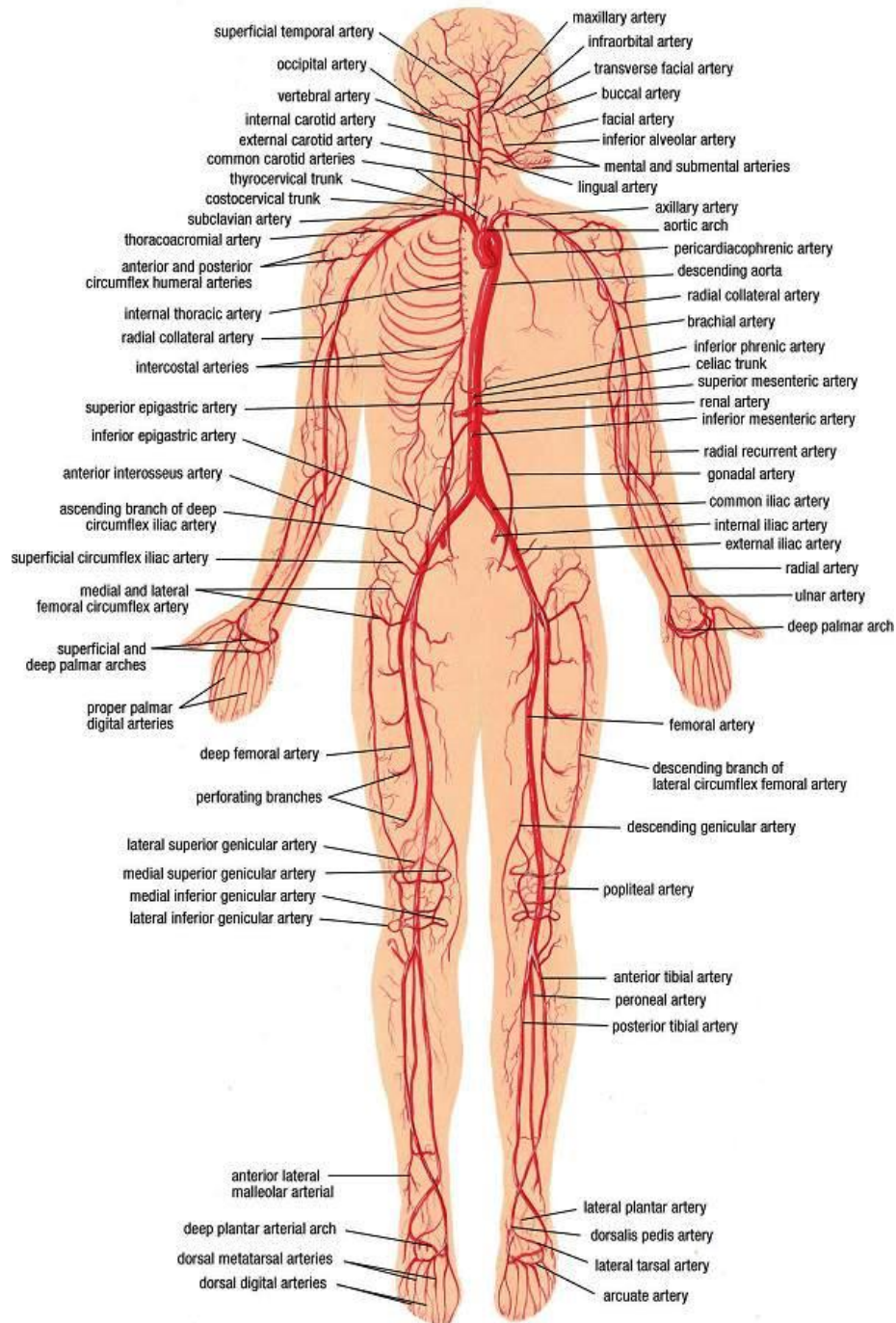


Valve Sparing Aortic Root Replacement





ARTERIAL SYSTEM (ANTERIOR VIEW)



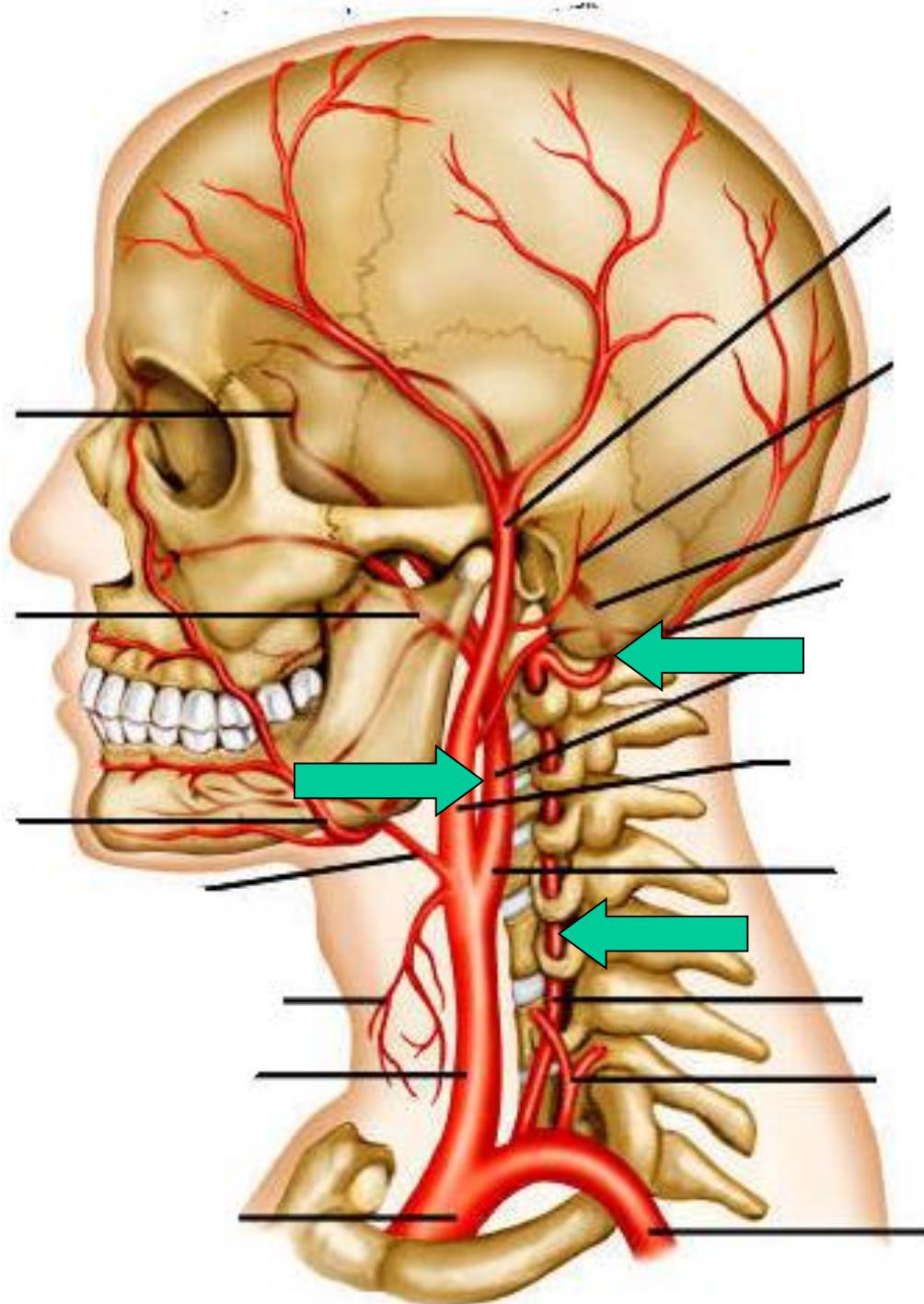
Normal

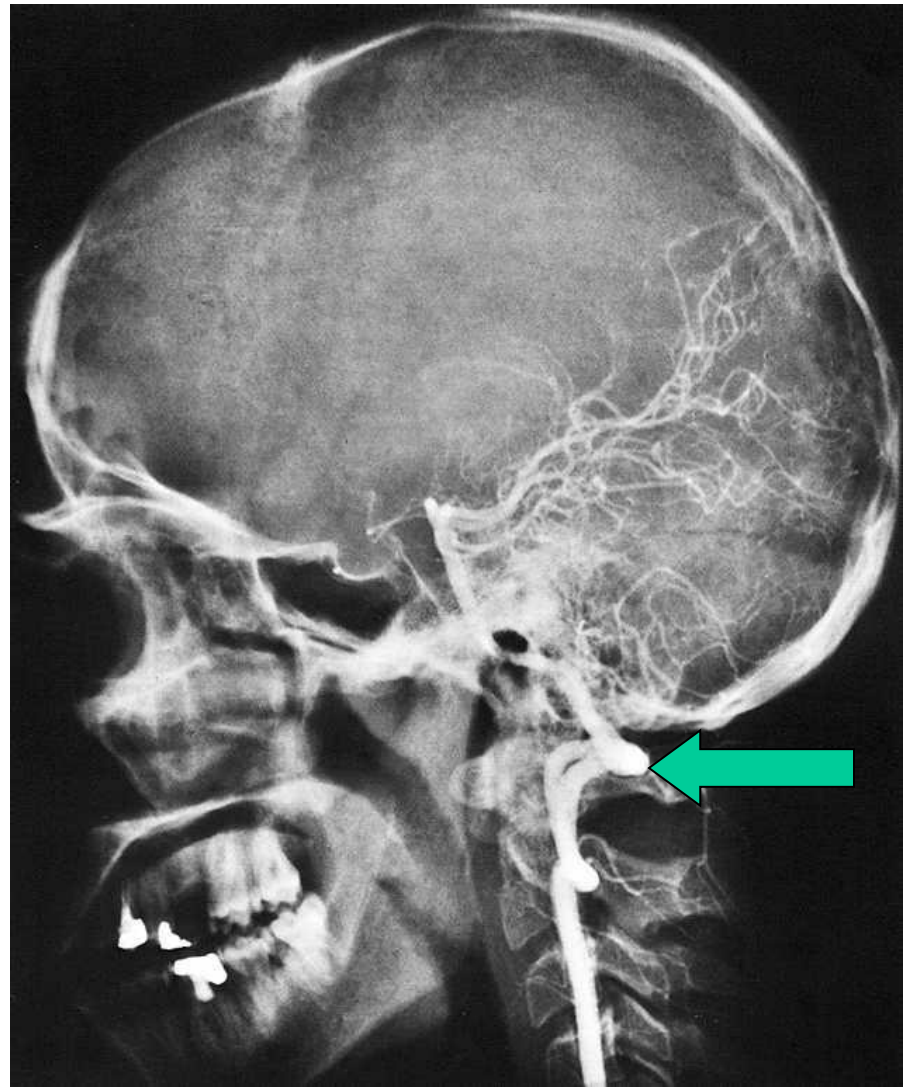
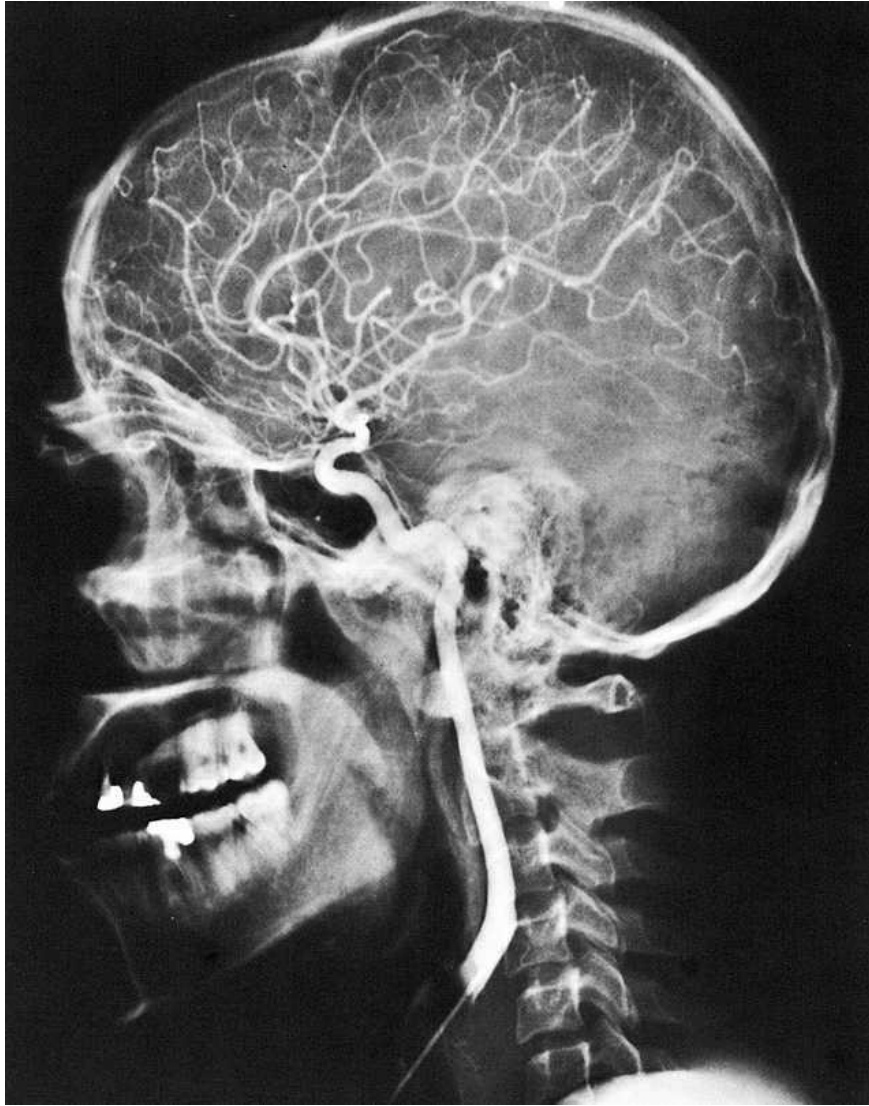


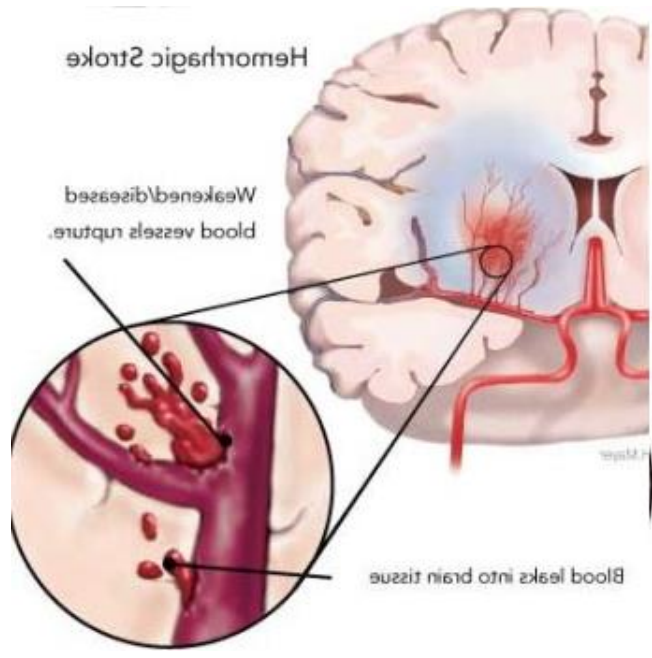
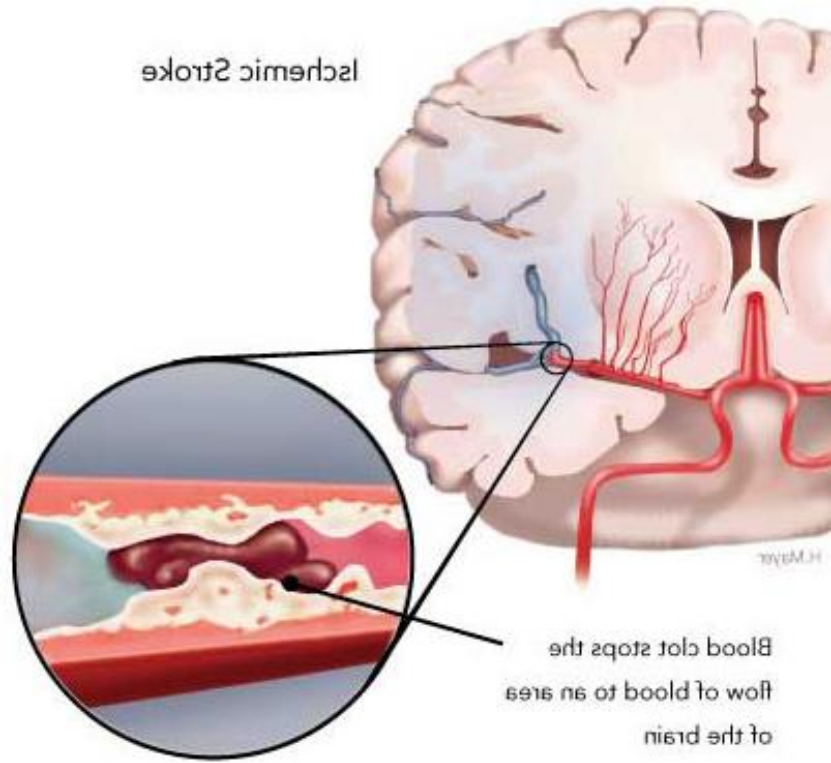
Diabetic risk

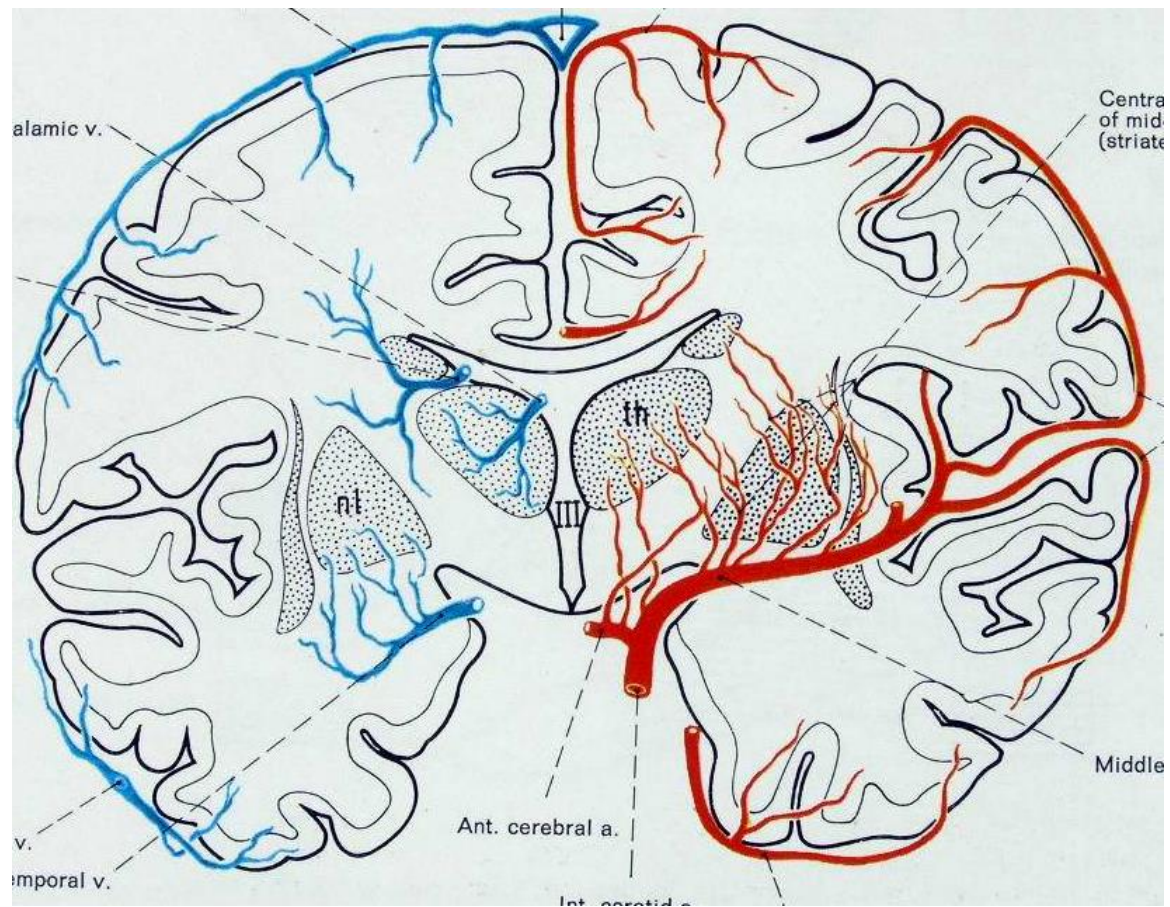


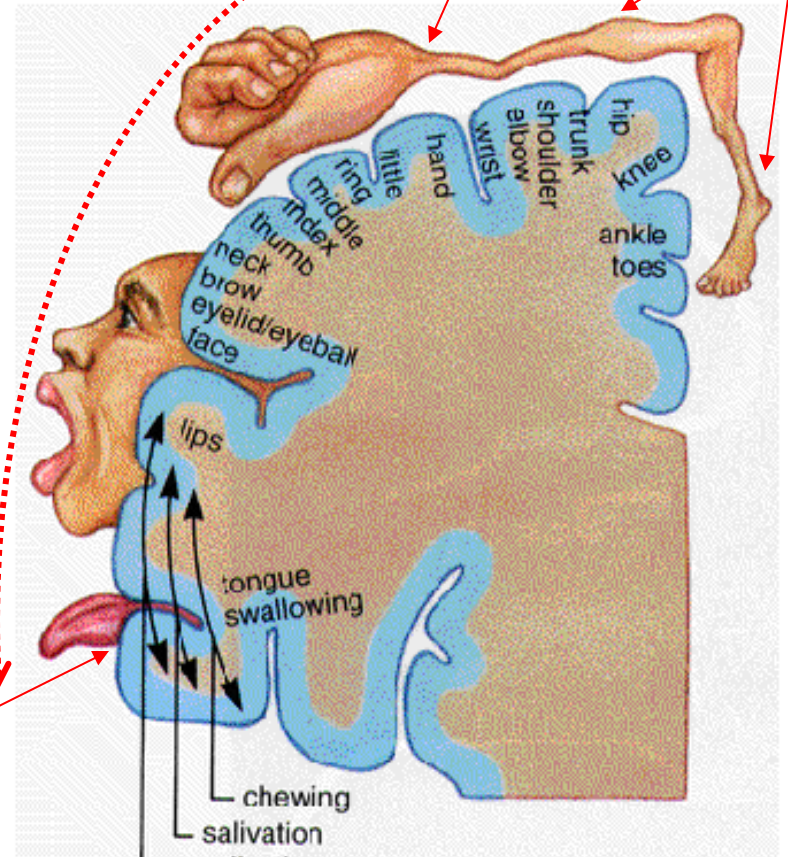
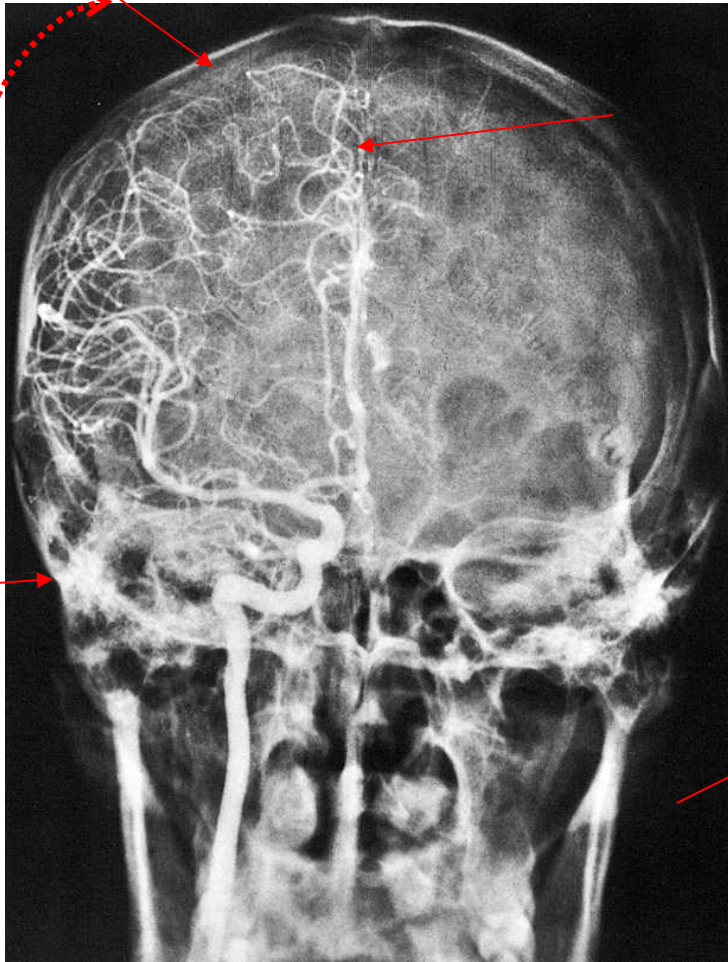
Blood vessel damage
in the feet may
cause tissue damage











centrum hybnosti

centrum kožnej citlivosti a bolesti

ČELOVÝ LALOK

ZÁHLAVOVÝ LALOK

Čuchové centrum

Zrakové
centrum

Sluchové centrum

